

EVOSTC FY 22-26 GENERAL RESTORATION and HABITAT PROJECT PROPOSAL FORM

Does this proposal contain confidential information? Yes No

Project Number* and Title

22220610 Kenai Peninsula Stream Watch

Primary Proposer(s)/Project Manager and Affiliation(s)

Branden Bornemann
Kenai Watershed Forum Executive Director

Date Proposal Submitted

March 29, 2021

Brief Project Description (maximum 300 words)

Kenai Watershed Forum (KWF) proposes to expand the highly successful, national award-winning Stream Watch volunteer program as a continuation of an Exxon Valdez Oil Spill Trustee Council (EVOSTC) investment in 2018. KWF expanded the program into the southern Kenai Peninsula initially in 2018 to implement Stream Watch volunteer driven river stewardship and education at extreme-high use recreational and fishing sites in the area. This proposal seeks to build on the initial success of the EVOSTC funded expansion for an additional five years. The proposed project will not only support existing efforts, but amplify prior investments, enable KWF to leverage additional funds, and ensure the long-term restoration of injured natural resources and services in the northern part of the Exxon Valdez oil spill (EVOS) affected area. The proposed project will support the personnel, travel, and supplies needed to implement five seasons of protecting, restoring, and enhancing critical riparian habitat on the Southern Kenai Peninsula, laying a foundation for future success of the program in the area. EVOSTC investment in Stream Watch would also provide meaningful service, leadership, and educational opportunities in local communities.

EVOSTC Funding Requested* (round to the nearest hundred, including 9% GA, where applicable*):

FY22	FY23	FY24	FY25	FY26	FY22-26 Total
\$109,300	\$102,100	\$102,100	\$94,800	\$87,500	\$495,800

** GA is a General Administration cost that applies to all EVOSTC projects except for purchase prices of habitat parcels. Please indicate if funds will be requested to be released on other than an annual basis. If the amount requested here does not match the amount on the budget form, the request on the budget form will be considered to be correct.*

Non-EVOSTC Funds to be used for this project, please include source and amount per source:

FY22	FY23	FY24	FY25	FY26	FY22-26 Total
\$49,231	\$21,765	\$21,765	\$21,765	\$21,765	\$136,291

Please see section 7B for a breakdown of these funds.

1. EXECUTIVE SUMMARY (maximum ~1500 words, not including figures and tables)

Background

The Kenai Peninsula, located in the northern half of the EVOS affected area, is home to the majority of the EVOSTC identified injured resources and services including various species of fish and birds as well as commercial fishing, passive use, recreation & tourism, and subsistence. The Kenai Peninsula also hosts one of the most popular and lucrative sport fisheries in the state of Alaska.

Many of the most productive rivers on the Kenai Peninsula still demonstrate the need for habitat protection and restoration, although previous EVOSTC restoration and protection efforts in the area have helped drive successful restoration of injured resources and services. Habitat degradation in the area is due in large part to riparian habitat trampling, erosion, and pollution caused by the mass influx of more than 350,000 anglers and over 20,000 personal use fishers who come to fish these waters. Even with such intensive use, the Kenai Peninsula's critical habitat areas are still able to be protected through proactive and reactive conservation efforts.

This project is intended to provide resources to expand community driven fish habitat conservation and peer-to-peer education on the Kenai Peninsula. The project is in direct support of multiple EVOSTC trustees and other land and water management agencies. Project programming will involve and serve diverse communities on the Kenai Peninsula while providing lasting benefits to injured resources and services.

Kenai Peninsula Stream Watch is a grass roots volunteer program that seeks to address EVOSTC restoration plan goals of protecting and restoring riparian habitat and water quality through education, stewardship, and restoration of freshwater aquatic ecosystems. The program was founded by a group of concerned anglers with support from the United States Forest Service (USFS) in 1994 to address fish habitat degradation occurring on the Russian and upper Kenai Rivers. Since the program's inception, Stream Watch volunteers played a vital role in dramatically reducing fish habitat degradation at these sites, restoring damaged habitat, and establishing a more educated and informed public about fish habitat conservation in the area.

In the 26-year history of Stream Watch, volunteers achieved the following impacts with support from the administrative partners:

- Over 21,000 volunteer hours contributed
- Volunteers educated over 62,000 members of the public about watershed health, fish habitat protection, ethical angling, and more
- Volunteers removed over 34,000 pounds of fish endangering debris from rivers, streams, riparian areas, and coastlines
- Volunteers assisted agencies with the seasonal installation, maintenance, and removal of 3 miles of habitat fencing to protect delicate stream bank habitat

Stream Watch volunteers restore and protect healthy riparian areas in the region's most heavily trafficked fishing areas. These near-bank habitats are vital to spawning and rearing habitat for fish as well as their food sources. Healthy fish populations are integral to highly productive habitat for many species including some that

were injured by EVOS. Intact ecosystems on the Kenai Peninsula protect human services such as sport fishing, commercial fishing, subsistence fishing, recreation and tourism, and passive use.

Now is the time to protect the intact habitats of the Kenai Peninsula Rivers while restoring the small percentage of degrading habitats that exist in these systems. Stream Watch is a volunteer driven, community centered, peer-to-peer cold-water fisheries habitat education and protection program. Stream Watch is well-established program on the Kenai Peninsula and shares EVOSTC's goals to ensure "the recovery of all injured resources and services, sustained by healthy, productive ecosystems to maintain naturally occurring diversity" (EVOSTC, 2014). Funding from EVOSTC would provide 5 years of foundational funding to expand the program's positive impact on rivers and streams of the southwestern Kenai Peninsula that flow into Cook Inlet. This project would have long term measurable benefits to injured resources and services and would help Stream Watch leverage additional resources to expand program success.

2. PROJECT HISTORY (maximum 400 words)

Stream Watch began in 1994 when a group of concerned anglers started volunteering their time to protect fish habitat and the health of the Russian and Kenai Rivers. Over 26 years, the program steadily expanded its geographical scope and impact. This project is a continuation of an EVOSTC investment in 2018 and 2019. Through support of EVOSTC, KWF was able to support existing Stream Watch efforts and expand the program into the southern Kenai Peninsula to assist area agencies with management of extreme high-use recreational and sportfishing sites in the area. The achievements of the EVOSTC investments in the project in 2018 and 2019 include:

- Hiring of a temporary seasonal Southern Peninsula Stream Watch Coordinator
- Increased volunteer engagement of 20% over the previous years, 2016 and 2017
- Increased program impact including a 95% increase in the quantity of fish and wildlife endangering debris removed from riparian and coastal habitats from 5,523 pounds in 2016 and 2017 combined to 10,785 pounds in 2018 and 2019 combined

The great leap in impact with debris removal indicates that per unit effort, volunteers on the southern peninsula got more work done to benefit habitat than at existing sites. Due to the success of the program and continued need for Stream Watch activities on the southern peninsula, the proposed project is to support Stream Watch through five additional seasons at the southern Kenai Peninsula sites, which would enable Stream Watch staff and administrators to fully formalize the program in the proposed area and the funding would provide invaluable leverage to draw additional investment into the program and the conservation, stewardship, and education work Stream Watch conducts to achieve the restoration of injured natural resources and services.

3. PROJECT DESIGN

A. Objectives

General Stream Watch project objectives that will be supported and enhanced by EVOSTC funding include:

- A. Recruit, train, and enroll at least 60 volunteers annually to participate in the program
- B. Annually protect riparian habitat by seasonally installing, maintaining, and removing habitat protective fencing (3-4 miles, increasing as needs can be addressed with growing capacity)

- C. Protect riparian habitat and create a culture of stewardship among members of the public by providing consistent educational messaging to river users at project sites, in social and print media, and through on site signage (4000+ individuals reached through peer-to-peer education and over 20,000 reached annually through media and signage)
- D. Restore riparian and instream habitat by removing habitat endangering debris (at least 4,000 pounds annually) and fish passage barriers as needs arise
- E. Restore riparian and instream habitat by conducting seasonal stream bank revetment projects in partnership with agency partners as needs arise
- F. Engage with diverse communities on the Kenai Peninsula through special events to be as inclusive as possible the program

Based on the results of the initial Stream Watch southern peninsula expansion, KWF proposes the following objectives for this project:

- G. Continue original efforts to expand Stream Watch to the southern Kenai Peninsula by hiring a seasonal southern coordinator position in order to expand partnerships, increase critical outreach, build institutional capacity, provide high quality engagement for volunteers, and reduce personnel turnover
- H. Recruit at least 10 new volunteers annually to work at southern peninsula sites, resulting in a group of 50 new volunteers engaged through the proposed project
- I. Enhance Stream Watch programming along the Cook Inlet coastline through 8 annual marine debris surveys and cleanups to further bolster efforts to restore resources and services, prevent marine pollution, and protect important estuarine and coastal habitat
- J. Strengthen relationships with communities and agencies served on the southern peninsula including Niniilchik Village and enroll at least one new member in the Steering Committee from an Alaskan Native Community
- K. Support current program activities by contributing additional staff time and funding for supplies and volunteer training
- L. Leverage EVOSTC funding to obtain additional investments in program expansion and to further develop Stream Watch to maximize the beneficial impacts to natural resources and services

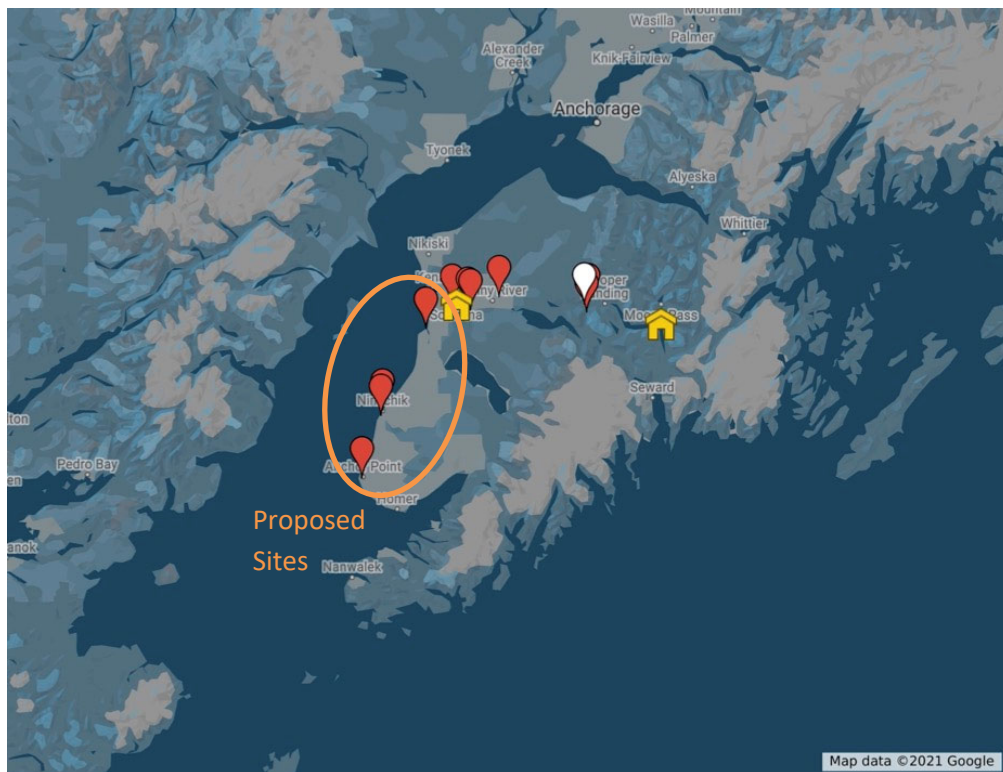
The proposed project would have numerous benefits for the overall effort to restore injured natural resources and services. Riverbank protection and restoration projects provide significant benefits to sockeye salmon, Dolly varden, and pink salmon as young fish of these species spend much of their time within six feet of the riverbank where water doesn't move as quickly and there are lots of insects and other food sources for the growing fish to access.

Stream Watch education has many benefits including the proliferation of stewardship among the general public. Stream Watch volunteers set an example of being habitat friendly anglers and engaged citizens and the benefits of Stream Watch presence at existing sites in the Kenai River system display that having non-enforcement peer-to-peer interpretation, education, and community service lightens the footprint of recreation in general and enhances restoration, stewardship, and conservation efforts. Such regular volunteer labor also frees up agency personnel to deal with larger issues and projects and can improve agency efficiency.

Given the long-term success of Stream Watch, the proposed project will have long term, measurable beneficial impacts for the restoration of injured natural resources and services.

B. Project Location

Due to the success of Stream Watch at the original Russian River and upper Kenai River sites from 1994-2010 and with a growing need for education, stewardship, and restoration at downstream sites, Stream Watch expanded in 2011. KWF took on a co-administrator role with USFS and initiated programming at three additional sites on the middle and lower Kenai River. After seven years of success with this initial expansion, Stream Watch initiated yet another expansion in 2018 with support from EVOSTC to provide services at sites further south on the Peninsula including on the Kasilof, Anchor, and Ninilchik rivers as well as Deep Creek. The southern expansion, which is still in its early stages, saw initial success. This funding would ensure the long-term success of southern peninsula Stream Watch programming.



Site Name	Managing Agency	Location
Established Sites – Northern Peninsula		
Russian River Ferry	USFS	60°29'05.57"N, 150°00'29.51"W
Russian River Falls	USFS	60°27'16.70"N, 149°59'13.70"W
Russian River Angler Trail	USFS	60°28'57.67"N, 149°58'25.85"W
Established Sites – Western Peninsula		

Centennial Park	City of Soldotna	60°28'42.63"N, 151° 5'18.28"W
Moose Range Meadows	USFWS	60°28'4.78"N, 150°58'3.11"W
Bings Landing State Park	AKDNR Alaska State Parks	60°30'59.34"N, 150°42'4.61"W
Proposed Sites - Southern Peninsula		
Kasilof River Mouth	AKDNR Division of Mining, Land, and Water	60°38'25.22"N, 151°31'05.44"W
Ninilchik State Rec. Site	AKDNR Alaska State Parks	60°02'57.60"N, 151°40'18.90"W
Anchor River State Rec. Site	AKDNR Alaska State Parks	59°77'18.22"N, 151°85'23.62"W
Deep Creek State Rec. Site	AKDNR Alaska State Parks	60°03'00.64"N, 151°68'14.88"W

All four of the proposed sites include highly productive habitat for Pacific salmonids, migratory and shorebirds, raptors, and of course insects and other vital food sources. These rivers also host vibrant sport fisheries, and the fish that spawn in their waters contribute to commercial fisheries, recreation & tourism, and subsistence. These rivers also support passive uses. The Kasilof River Flats are designated as an Important Bird Area by Audubon and the Anchor River system includes Alaska Department of Fish and Game (ADFG) designated critical habitat.

C. Procedures and Methods

The Stream Watch Steering Committee members and site liaisons convene to review program data and amend the annual operations plan at the opening and close of every field season. The southern peninsula Stream Watch Coordinator also gets hired during this time period. Drawing from the annual operations plan, the following timeline will be followed annually after to accomplish the project goals:

- **April/May:** Volunteer coordinators complete volunteer recruitment with posters, presentations, press releases, direct outreach; coordinate large-scale projects with program partners such as fish passage barrier removal; and complete administrative activities to update website, fund program, prepare data forms, and coordinate Steering Committee. (Project objectives A, F, G, H, J, K, L)
- **May:** Volunteer coordinators complete program planning and preparation, prepare orientation and educational materials, coordinate with on-site liaisons, connect with partners, coordinate permits for large scale projects, etc. (Project objectives A, F, H, J, K)
- **June:** Volunteer coordinators facilitate volunteer orientations, coordinate on-site volunteers in conjunction with fishing seasons and project needs, and staff local community events to share educational messages and recruit large scale fencing volunteers. Special projects like spruce tree revetments may also occur during this time. (Project objectives A, B, D, E, F, G, H, I, J, K)
- **July/August:** Volunteers and staff conduct general summer field program stewardship, restoration, and education operations in conjunction with fishing seasons and project needs, and complete special projects like fish passage barrier removals. Staff coordinate large-scale river clean-ups for the close of the dip net fishery. (Project objectives C, D, E, F, I, J, K)

- **September:** Volunteer Coordinators coordinate on-site volunteers in conjunction with fishing seasons and project needs, staff local community events to share educational messages and complete program wrap-up and winterization. Staff compile Stream Watch program outcomes and complete reports to funding partners. (Project objectives C, D, E, F, I, J, K, L)
- **October:** Staff conduct administrative activities and program development including reporting and proposing grants, meeting with partners, updating online resources, producing press releases for local news and other media outlets, and coordinating a Steering Committee meeting to review previous season and plan for the upcoming season. (Project objectives F, G, J, K, L)
- **November – March:** Permanent seasonal coordinator is off work during this time. Permanent coordinator continues efforts in program development and administration, corresponds with partners, acquires equipment, permits, and prepares for upcoming season as needed. (Project objectives F, J, K, L)

Volunteers will complete a variety of tasks while at program sites. Tasks include salmon habitat fence installation and maintenance according to land manager specifications, litter removal as well as providing peer-to-peer, on-river salmon habitat protection education and other salmon habitat restoration projects. Salmon habitat restoration projects are identified by land managers and may include fishing line removal, removal of fish passage barriers, revetments or vegetation management. Special events are coordinated to facilitate large, one-day habitat restoration or protection projects such as beach cleanups, fish passage barrier removal, and stream bank revetments.

D. Project Reporting

KWF is committed to providing robust reports each year to update EVOSTC and staff on the progress made during the year. These reports will include specific and measurable data on the impacts of the program, information about funding received and expended, a narrative explanation of the work done, milestones achieved, and any variations from the project plan.

4. COORDINATION AND COLLABORATION

A. With Other EVOSTC-funded Projects (if applicable)

The proposed project ensures (and enhances) the benefits of previous EVOS habitat protection actions are fully realized and sustained. EVOSTC funded the initial expansion of the Stream Watch Program to the southern peninsula in 2018 and 2019, and this project seeks to build upon that work for the next five years (2022 - 2026). During the years 2018 and 2019, EVOSTC funding made it possible for Stream Watch to increase volunteer engagement by 20% over the previous years 2016 and 2017. This increase led to a corresponding leap in program impact including a 95% increase in the amount of fish and wildlife endangering debris removed from riparian and coastal habitats from 5,523 pounds to 10,785 pounds.

While the proposed project won't occur directly on lands acquired by EVOSTC, it would be part of a holistic effort to fully restore and sustain injured resources and services across the region. The following habitat parcels that were purchased with EVOS Trust dollars would be complemented by Stream Watch activities funded through this project: Coal Creek, Eliot (Anchor River), Crowther (Anchor River), Icicle Seafoods (Ninilchik River), Swartz (Ninilchik River), Ninilchik, Morris (Ninilchik), Knol, Nakada, and Thompson. These parcels contribute to the restoration of sockeye salmon, Dolly Varden, pink salmon, bald eagles, river otters, intertidal and subtidal resources, harlequin ducks, and services including recreation, passive, and commercial fisheries. Stream Watch

strives to complement these habitat restoration and conservation efforts by ensuring that high use sportfishing sites within the areas river systems continue to serve as healthy habitat in addition to hosting recreational and passive opportunities as well as supporting commercial fisheries.

B. With Trustee or Other Management Agencies or Organizations

The mission of Stream Watch is “to assist land management agencies with stewardship and peer-to-peer education on the Kenai Peninsula.” This mission grew from the vision of the founding volunteers. Stream Watch activity directly supports the work of five EVOSTC trustees including United States Department of Agriculture through the USFS, United States Department of the Interior through United States Fish and Wildlife Service (USFWS), National Marine Fisheries Service and National Oceanic and Atmospheric Administration (NOAA), Alaska Department of Environmental Conservation (ADEC), and ADFG. The proposed project would also directly benefit another agency that is not represented on EVOSTC, Alaska Department of Natural Resources (AKDNR) through the Division of Mining, Land, and Water and Alaska State Parks.

Below is information about Stream Watch’s support of EVOSTC trustee work:

- USFS – Stream Watch is co-administered by KWF and the USFS through Chugach National Forest. This productive relationship has led to program success over the past 26 years including the achievement of many mutually held goals of stewarding resources and services as a direct public service. Francisco Sanchez, the Seward District Ranger with USFS sits on the Stream Watch Steering Committee.
- USFWS – Stream Watch operates on USFWS lands and maintains an excellent working relationship with Kenai National Wildlife Refuge. Refuge Manager, Andy Loranger, sits on the Stream Watch Steering Committee, and Stream Watch volunteers often work side by side with Refuge staff to protect habitat and educate the public at popular fishing sites within the Refuge.
- NOAA – Stream Watch activities directly benefit NOAA Trust Resources including anadromous Pacific salmonids and the endangered Cook Inlet Beluga Whale population that frequently utilizes habitat in the Kenai and Kasilof River systems. Stream Watch is also making efforts to enhance and grow coastal stewardship programming and utilized resources from the NOAA Marine Debris Program in this work, including the toolkit for marine debris surveys, which Stream Watch conducts around the Kenai River and Kasilof River estuaries. This project would expand that programming to the coastlines around the estuaries of the Ninilchik River, Anchor River, and Deep Creek. Currently Stream Watch has funding from NOAA through the Pacific States Marine Fisheries Commission to engage recreational anglers in fish habitat conservation efforts.
- ADEC – Stream Watch activities, in particular Stream Watch efforts to protect healthy riparian areas directly benefit the goals of ADEC to maintain water quality in Kenai Peninsula rivers and streams by providing natural filtration of runoff and stable riverbanks. Stream Watch is currently collaborating with ADEC to provide an educational booth at the Kenai River dipnet fishery.
- ADFG – Stream Watch work directly benefits ADFG in a number of ways. Stream Watch was founded by anglers and many of the program participants are anglers who are determined to assist in the conservation of fish and wildlife to ensure abundant recreational and sustenance opportunities for future generations. In addition to providing conservation impacts, Stream Watch volunteers provide a non-enforcement, peer-to-peer informational service for anglers at high use fishing sites about fish

species identification, fishing regulations, swift water and wildlife safety and more. ADFG is also a partner on the project to provide information at the Kenai River dipnet fishery through a Stream Watch volunteer staffed booth. Leah Ellis is the primary ADFG contact on this project.

Stream Watch also benefits the non EVOSTC agency AKDNR through the following program activities:

- Division of Mining, Land, and Water – through prior efforts to expand Stream Watch to the southern Kenai Peninsula, Stream Watch began to operate at the Kasilof River Special Use Area, in particular during the dipnet fishery. This site is administered by AKDNR Division of Mining, Land, and Water. Stream Watch volunteers regularly conduct coastal cleanups in this area. The proposed project would provide resources for enhanced programming at this site. Ben Hagedorn of AKDNR sits on the Stream Watch Steering Committee.
- Alaska State Parks – Stream Watch currently operates at Bing’s Landing State Park and the proposed project would include additional services at three State Recreation sites at Deep Creek and the Ninilchik and Anchor rivers. Jack Blackwell, regional State Parks Superintendent sits on the Stream Watch Steering Committee, and Stream Watch maintains a productive relationship with the agency.

Stream Watch activities also benefit other regional land managers including the Cities of Kenai and Soldotna at sites including Centennial Park and at the Kenai River dipnet fishery. Both cities have staff who sit on the Stream Watch Steering Committee.

C. With Alaska Native and Other Local Communities

Stream Watch is a volunteer driven and community centered program. The program was established by community members in Cooper Landing, some of whom are still volunteers today. As the program expanded, community members from Sterling, Soldotna, Kenai, and Nikiski got involved. Today Stream Watch regularly engages over 100 volunteers during a season. Volunteers come from nearly all established communities on the Kenai Peninsula including Kasilof, Deep Creek, Anchor River, and Ninilchik. Often, these volunteers travel to participate in the program at established Stream Watch sites on the Kenai River even though there is an identified need for the program at nearly every popular sportfishing site on the Peninsula as well as at coastal sites that provide significant habitat to injured species.

This EVOSTC funded project would ensure that Stream Watch resources reach smaller communities like Ninilchik, Anchor Point, and Deep Creek. Stream Watch staff and the administrators will engage Alaska Native communities including members of Salamatof Village, Ninilchik Village, and the Kenaitze Indian Tribe. Outreach to these communities will take many forms, from organized river and coastal cleanups, youth service-learning opportunities, and educational events such as birding, beluga counts and other interpretive talks. Stream Watch is determined to be widely inclusive and to offer leadership opportunities to members of these communities who engage in the program, which can take the form of trainings for volunteers, special events to engage the public, and leading volunteer supported restoration or stewardship projects.

With funding from this proposal, Stream Watch would hire a season southern Peninsula coordinator, and staff will promote this position in the communities which it would serve. The Stream Watch Coordinator at KWF would work directly with the new hire and is skilled in communications and outreach. Stream Watch will use in person special events, peer-to-peer education and recruitment, social media, print, and radio to reach members

of these communities in order to enroll broad participation in education and stewardship at the proposed sites and to serve the surrounding communities.

5. DELIVERABLES

The proposed project includes the following deliverables:

- Progress reports annually on March 1 in 2023, 2024, 2025, and 2026
- Final report on March 1, 2027
- 10 additional volunteers recruited trained and enrolled annually in the project area
- 4000+ pounds of fish and wildlife endangering debris removed annually from riparian, instream, and coastal habitats
- Annual engagement of 4000+ members of the public in peer-to-peer education
- Documentation of outreach and engagement of communities in the southern peninsula area

6. STATUS OF SCHEDULED PROJECT ACCOMPLISHMENTS

List each project milestone, task, and deliverable in the chart (examples are shown below), and specify by each quarter of each year when these are anticipated to be accomplished. C = completed; X = planned work is underway, but not yet completed. Show project milestones and planned task progress by fiscal year and quarter, beginning February 1, 2022. Fiscal Year Quarters for each year of the project are: 1= Feb. 1-April 30; 2= May 1-July 31; 3= Aug. 1-Oct. 31; 4= Nov. 1-Jan 31.

Milestone/Task	FY22				FY23				FY24				FY25				FY26			
	1	2	3	4	1	2	3	4	1	2	3	4	1	2	3	4	1	2	3	4
Milestone: Establish operations at southern peninsula sites				C																
Annual Operating Plan Completed	C																			
Hire & train Southern Peninsula coordinator	C																			
Purchase supplies for sites	X	C																		
Recruit & train 2022 southern peninsula volunteers	X	C																		
Complete first season of project operations including corresponding objectives		X	C																	
Milestone: Successful season of operations at southern peninsula sites								C				C				C				C
Annual Operating Plan Completed	C			X	C			X	C			X	C			X	C			
Recruit & train new volunteers and refresh returning volunteers					X	C			X	C			X	C			X	C		
Install, maintain and remove habitat fencing						X	X			X	X			X	X			X	X	
Conduct NOAA marine debris cleanups						X	X			X	X			X	X			X	X	

Milestone/Task	FY22				FY23				FY24				FY25				FY26				
	1	2	3	4	1	2	3	4	1	2	3	4	1	2	3	4	1	2	3	4	
Conduct peer-to-peer education and hold special events						X	X	C		X	X	C		X	X	C		X	X	C	
Reporting:																					
Produce financial report for FY			X	C			X	C			X	C			X	C			X	C	
Meet with Steering Committee				C				C				C				C				C	
Write and submit annual report to EVOSTC				X	C			X	C			X	C			X	C				
Final report/Project results																				C	

7. PROJECT BUDGET

A. Budget Forms (Attach)

Budget Category:	Proposed FY 22	Proposed FY 23	Proposed FY 24	Proposed FY 25	Proposed FY 26	5-YR TOTAL PROPOSED	ACTUAL CUMULATIVE
Personnel	\$71,430	\$66,225	\$66,225	\$61,020	\$55,815	\$320,715	
Travel	\$4,838	\$4,838	\$4,838	\$4,838	\$4,838	\$24,192	
Contractual	\$0	\$0	\$0	\$0	\$0	\$0	
Commodities	\$1,950	\$1,950	\$1,950	\$1,950	\$1,950	\$9,750	
Equipment	\$0	\$0	\$0	\$0	\$0	\$0	
Indirect Costs (28.25%)	\$22,097	\$20,626	\$20,626	\$19,156	\$17,685	\$100,191	
SUBTOTAL	\$100,315	\$93,640	\$93,640	\$86,964	\$80,289	\$454,848	
General Administration (9% of subtotal)	\$9,028	\$8,428	\$8,428	\$7,827	\$7,226	\$40,936	N/A
PROJECT TOTAL	\$109,343	\$102,067	\$102,067	\$94,791	\$87,515	\$495,784	
Other Resources (In-Kind Funds)	\$0	\$0	\$0	\$0	\$0	\$0	

B. Sources of Additional Funding

Non-EVOSTC Funds to be used for this project, please include source(s) and amount and timing per source, and any conditions on their use:

FY22	FY23	FY24	FY25	FY26	FY22-26 Total
\$49,231	\$21,765	\$21,765	\$21,765	\$21,765	\$136,291

Stream Watch is largely grant-funded. As a result, future funding related to this project is largely unknown. It is with a degree of confidence in existing partnerships and funding relationships that KWF can demonstrate the following funds as leverage for success is the proposed project. KWF is confident that with the requested funding from EVOSTC, it will be possible to leverage funding for the proposed project in addition to what is recorded here.

Non-EVOSTC funds to be used directly for this project:

- Alaska Conservation Foundation, Conservation Intern Grant - \$6,000/year - Pending approval
- AKDNR - \$4,000/year - To support Stream Watch activity at Kasilof River Special Use Area

- Kenai Peninsula Fish Habitat Partnership - \$5,000/year – Pending grant approval, to purchase supplies for volunteers
- In-kind match from volunteers –at least \$6,765 annually – Pending project implementation
- Pacific State Marine Fisheries Commission - \$27,466, FY22 – Pending grant approval for conservation work with recreational fishers related to this project

8. PROJECT MANAGEMENT AND PERSONNEL

A. Project Management

This Project will be managed by KWF, a 501(c)3 non-profit organization whose mission is *Working Together for Healthy Watersheds on the Kenai Peninsula*. KWF will also be the fiscal agent for the project. With an annual budget of \$3M, with more than 40 active grants and contracts from a variety of sources including local, state, and federal governments, KWF is a recognized leader among watershed organizations in Alaska and beyond. With six permanent employees, KWF utilizes a non-adversarial approach, focusing on solutions through high quality research, education, and restoration programs to meet the evolving needs of the region. This can be seen on the water and at the conference table. KWF facilitates hard conversations on natural resource issues, as evidenced by its role in facilitating the formation of and serving as coordinator for the Kenai Peninsula Fish Habitat Partnership, which has brought varying entities to the table and has received national recognition through the National Fish Habitat Partnership. KWF is proud of its nationally recognized programs including Stream Watch. KWF has successfully administered the Stream Watch Program in the Western Peninsula since 2011 and in the Southern Peninsula since 2018.

For this proposal, Key Project agents include:

- Bornemann, Branden: Project Manager, Stream Watch Program Supervisor, KWF Executive Director
- Hecht, Galen: KWF Western Peninsula Stream Watch Coordinator

As the Kenai Peninsula Stream Watch is a well-established program and jointly administered by KWF and the USFS, the Project Manager will be working in tandem with USFS administrators and the Stream Watch Steering Committee. The USFS administrators are responsible for program development and implementation in the Northern Peninsula and program-wide oversight. Key agents include:

- Glaser, Marion: USFS Stream Watch Program Supervisor and Chugach National Forest Interagency Coordinator
- Kraxberger-Linson, Amber: USFS Northern Peninsula Stream Watch Coordinator

The Kenai Peninsula Stream Watch Program steering committee includes leaders from local, state, and federal land management agencies and are responsible for providing evaluation to the Stream Watch Annual Operations Plan. Current steering committee members include:

- Blackwell, Jack: Superintendent, AKDNR, Alaska State Parks
- Hagedorn, Ben: Manager, AKDNR, Division of Mining, Land, Water
- Loranger, Andy: Refuge Manager, USFWS, Kenai National Wildlife Refuge

- Queen, Stephanie: City Manager, City of Soldotna
- Sanchez, Francisco: District Ranger, USFS, Chugach National Forest

B. Personnel Qualifications (see CVs below)

Branden Bornemann

Kenai Watershed Forum, 44129 Sterling Hwy., 99669
907.953.2605 - E: branden@kenaiwatershed.org

Involvement in Current and Past EVOSTC Funded Projects

Through my current position as Executive Director of the Kenai Watershed Forum, I have been, and currently am, involved with the following EVOSTC funded projects: Stream Watch 2018-2019, EVOSTC funds administered through the USFWS; and Cooperative Agreement Number 20-021, "North Fork Anchor River and Nikolaevsk River Fish Passage," EVOSTC funds currently being administered through the Alaska Department of Fish and Game.

Career History

Kenai Watershed Forum – Soldotna, AK Executive Director Environmental Program Lead	July 2018 – Present June 2011 – May 2017; Sept. 2017 – July 2018
Trout Unlimited, Klamath Falls, OR Water Project Coordinator	May 2017 – Aug. 2017
University of Alaska, Soldotna, AK Adjunct Professor, Physical Geology	Aug. 2012 – May 2017
SWCA Environmental Consultants, Bismarck, ND Environmental Project Manager	March 2010 – May 2011
United States Forest Service, Chugach National Forest, Moose Pass, AK Lead Biological Science Technician	May 2009 – Sept. 2009
University of North Dakota, Great Plains Center for People and Environment, Grand Forks, ND Lead Graduate Research Assistant	May 2007 – Feb. 2010

Continuing Education

Certificate in Nonprofit Management <i>The Foraker Group and University of Alaska, 10.4 Continuing Education Units (108.5 hours)</i> <i>Recipient of "All-In" peer-to-peer award (one of just two overall awards) for dedication to course objectives and leadership in Alaska's nonprofit sector</i>	Dec. 2019
--	-----------

State and Local Appointments

Kenai River Special Management Area State Advisory Board – Alaska State Parks <i>Commissioner-Appointed Board Member, June 2018 – Present; Habitat Committee Chair</i> <i>Commissioner-Appointed Board Member, Sept. 2015 – May 2017</i>
City of Kenai Harbor Commission <i>Mayoral/Council-Appointed Member, Feb. 2020 – Present</i>
Kenai Peninsula Borough Anadromous Waters Habitat Task Force <i>Mayoral/Council-Appointed Member, Jan. 2020 – February 2021</i> <i>Peer-Appointed Vice-Chair</i>

Academic Qualifications

University of North Dakota, Grand Forks, ND
Master of Environmental Management, Earth System Science and Policy Dec. 2009

University of North Dakota, Grand Forks, ND
Bachelor of Science, Environmental Geography May 2007
[minor] – Recreation and Tourism Studies

Professional Affiliations and Community Volunteerism

KDLL Pickle Hill Public Radio
Board Member, Jan. 2017 – Present

Kenai Peninsula Fish Habitat Partnership
Coordinator, July 2018 – Present
Steering Committee Member, April 2014 – May 2017

Tustumena 200 Sled Dog Race
Trail Boss, Jan. 2012 – June 2019

Alaska Hydrography Technical Working Group
Technical Advisor, April 2013 – May 2017

Kenai Peninsula GIS Users Group
Member, June 2011 – May 2017

Kenai Peninsula Trout Unlimited
Scientific and Technical Advisor, Oct. 2015 – Dec. 2016
Chair and Founding Member, April 2013 – Oct. 2015

Great Plains Fish Habitat Partnership
Committee Member, July 2010 – June 2011

Stream Watch Collaborators and Historical Partners:

- Aspens, Sarah: ADEC; sarah.aspens@alaska.gov
- Blackwell, Jack: AKDNR State Parks; jack.blackwell@alaska.gov
- Carmichael, Andrew: City of Soldotna; acarmichael@soldotna.org
- Conner, Matt: USFWS; matt_conner@fws.gov
- Derks, Todd: AKDNR; todd.derks@alaska.gov
- Ellis, Leah: ADFG; leah.ellis@alaska.gov
- Frates, Bob: City of Kenai; bfrates@kenai.city
- Glaser, Marion: USFS; marionglaser@fs.fed.us
- Hagedorn, Ben: AKDNR, Division of Mining, Land, Water; ben.hagedorn@alaska.gov
- Loranger, Andy: USFWS; andy_loranger@fws.gov
- Ostrander, Paul: City of Kenai; postrander@kenai.city
- Queen, Stephanie: City of Soldotna; squeen@soldotna.org
- Sanchez, Francisco: USFS; francisco.sanchez@usda.gov

GALEN HECHT

CONTACT

📍 PO Box 3211
Soldotna, AK, 99669

✉️ Galen.Hecht995@gmail.com

📞 (907) 398-4304

SKILLS SUMMARY

- Writing & Editing
- Communications & Outreach
- Budgeting and Cost Analysis
- Public Speaking
- Web Development
- Spanish

CERTIFICATES

- 📖 Midwest Academy – Organizing for Justice
- 📖 Social Movement Technologies - Digital Campaigner
- 📖 TopGun Entrepreneurship Accelerator

REFERENCES

Jen Pelz, WildEarth Guardians
JPelz@wildearthguardians.org
(303) 884-270

Ken Cline, College of the Atlantic
KCline@coa.edu
(207) 801-5719

Sneha Subramanian, Watson Foundation
Sneha@watson.foundation
(212) 245-8859

ENVIRONMENTAL PROFESSIONAL

PERSONAL PROFILE

I am trained in interdisciplinary environmental conservation with a focus on freshwater and communications. I am a motivated team member willing to take initiative and tackle challenging objectives with a range of organizational and project management skills.

WORK EXPERIENCE

Stream Watch Coordinator

Kenai Watershed Forum | July 2020 - present

Coordinated river stewardship volunteer program, wrote grants, managed program budget

Rio Grande Campaigner

WildEarth Guardians | Jan 2019 - July 2020

Launched campaign to restore flows in Rio Grande; worked with tribes, agencies, governments and irrigators, managed volunteers and communications; advocated in New Mexico and D.C.

Marketing & Business Development Coordinator

PowerWise Systems | 2018

Coordinated grants to National Science Foundation & Maine Technology Institute, conducted online and tradeshow marketing

Thomas J Watson Fellow

Watson Foundation | 2016-17

Conducted expeditionary fellowship on three large transboundary rivers and studied innovative, collaborative solutions for managing healthy watersheds across borders

EDUCATION

College of the Atlantic

BA in Human Ecology | 2016 | Presidential & Davis Scholar

Interdisciplinary degree focused on western water policy & documentary studies, documented community freshwater management and restoration efforts in Northern New Mexico

Lester B Pearson United World College

International Baccalaureate Diploma | 2013 | Davis Scholar