

# Exxon Valdez Oil Spill Trustee Council

4230 University Drive • Anchorage, AK 99508-4650 • 907 278 8012 • fax 907 276 7178



## MEMORANDUM

**TO:** Elise Hsieh, Executive Director

**FROM:** Linda Kilbourne, Administrative Manager 

**DATE:** March 21, 2016

**SUBJECT:** FY 2015 Investment Report Update

Please find attached a summary of the Alaska Department of Revenue, Treasury Division monthly and summary reports for the *Exxon Valdez* Oil Spill Investment Fund Research and Habitat sub-accounts for the EVOSTC Fiscal Year 2015 (February 1, 2015 – January 31, 2016) reporting period. All funds remaining Koniag sub-account were transferred to the Habitat sub-account with the termination of the Master agreement between the Koniag Corporation and EVOSTC as recorded in Court Notice 55.

### Attachment A - Schedule(s) of Invested Assets

- Graph Comparison of Monthly Investment Activity by Sub-Account and Total Combined
- Department of Revenue, Treasury Division, "Schedules of Invested Assets"

### Attachment B - Schedule(s) of Investment Income & Schedule(s) of Changes in Invested Assets

- Graph Comparison of Changes in Invested Assets
- Department of Revenue, Treasury Division, "Schedule(s) of Investment Income & Changes In Invested Assets"

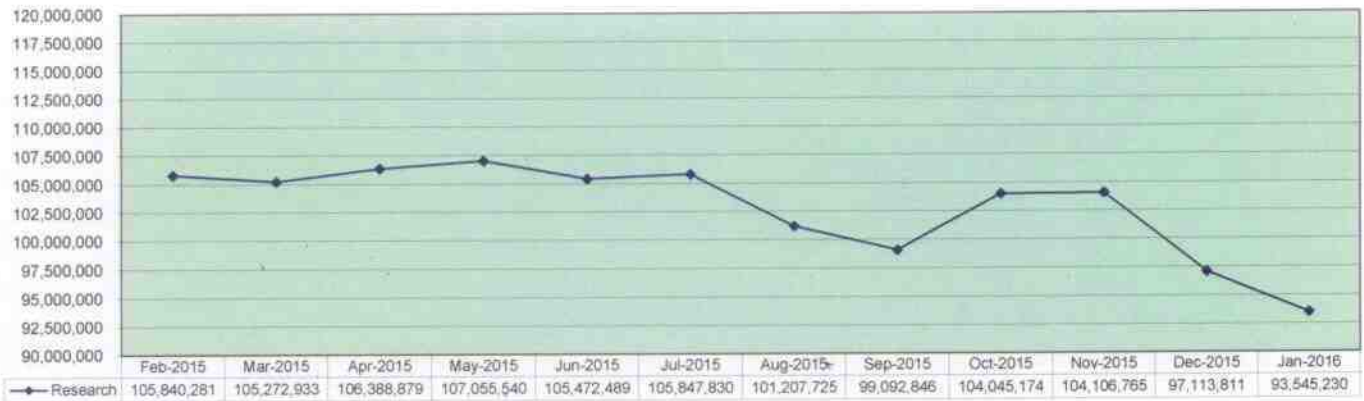
### Attachment C - Asset Allocation Worksheet

- Graph Comparison of Allocated Investment Holdings and Resultant Variances
- Department of Revenue, Treasury Division, "Asset Allocation Policy & Actual Investment Holdings"

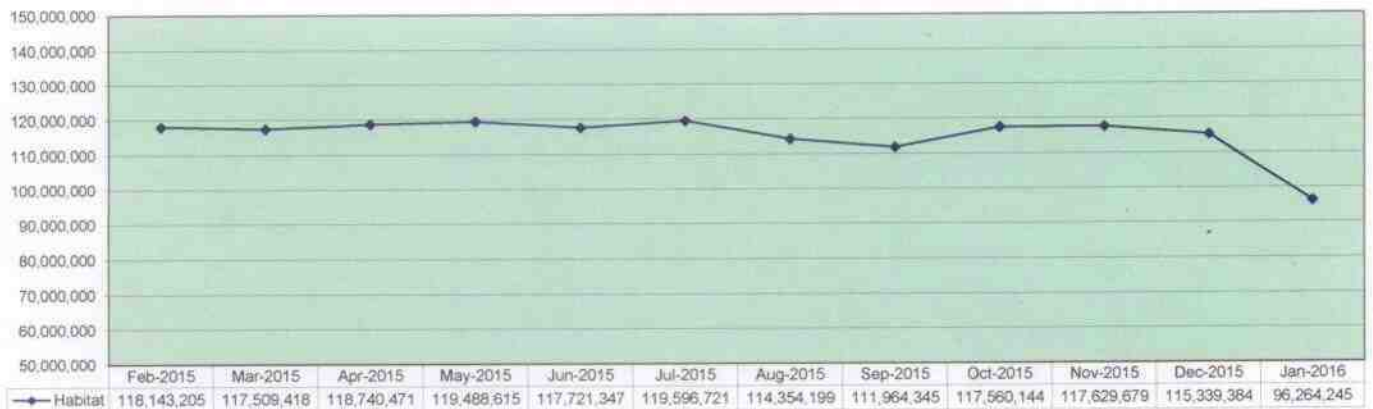
### Attachment D - Performance Measurement Report(s)

- Graph Comparisons of Various Performance Measurements, to include: Period Comparisons of the Investment Fund Index, Market Value Comparisons by Sub-Account and Investment Pools; and Comparisons of Investment Pools Rates of Return
- Department of Revenue, Treasury Division, "Summary of Performance and Rates of Return"

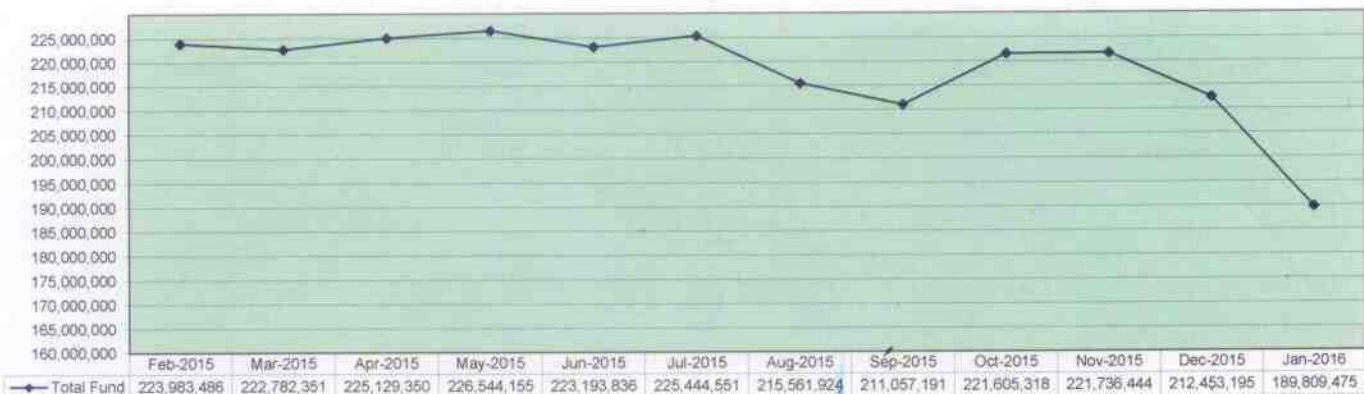
Research Sub-Account Invested Assets



Habitat Sub-Account Invested Assets

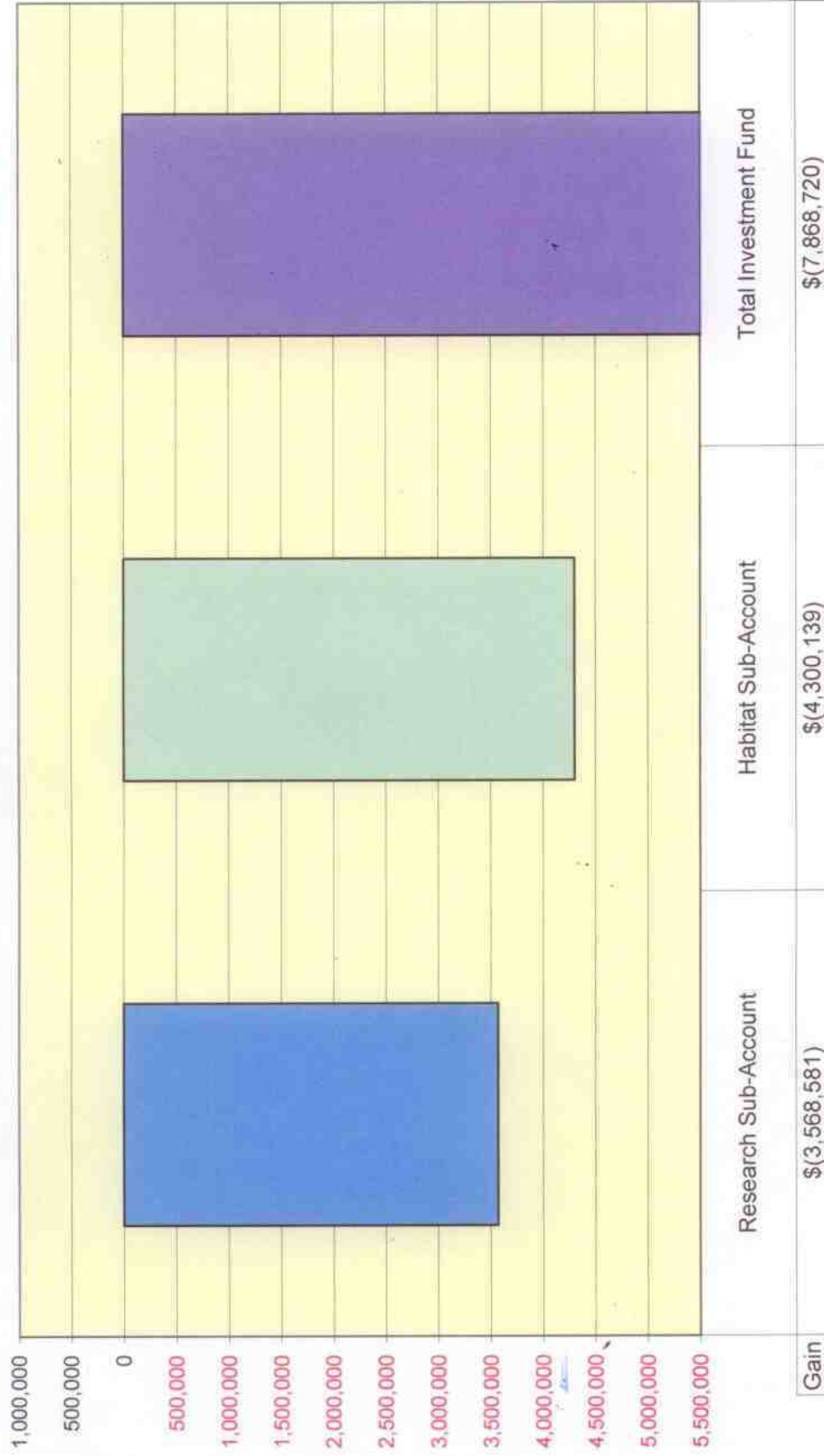


Combined Sub-Accounts Invested Assets

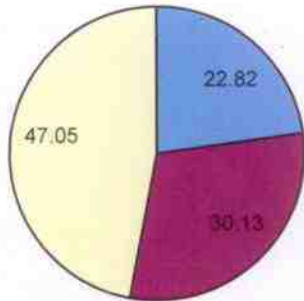


# Change in Invested Assets January 2016

(Konaig Agreement ended & remaining funds transferred to Habitat account)

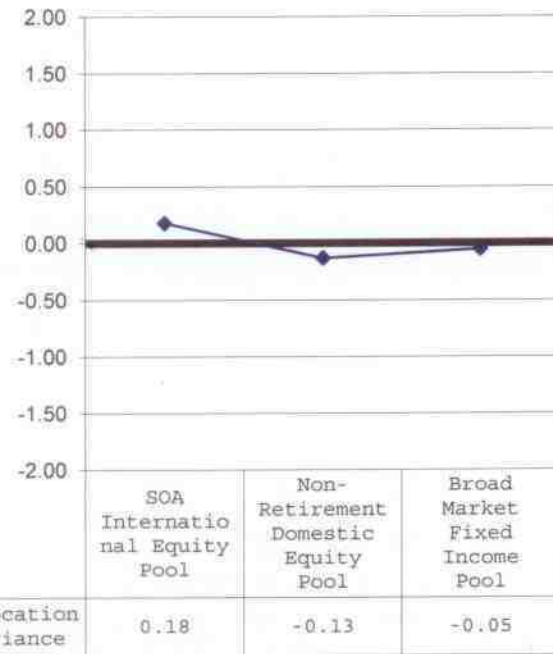


**EVOS Research Investment**  
Marketable Debt & Equitable Securities  
Actual Allocations

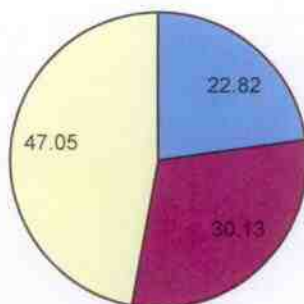


■ SOA International Equity Pool  
■ Non-Retirement Domestic Equity Pool  
□ Broad Market Fixed Income Pool

**EVOS Research Investment**  
Marketable Debt & Equitable Securities  
Allocation Variances

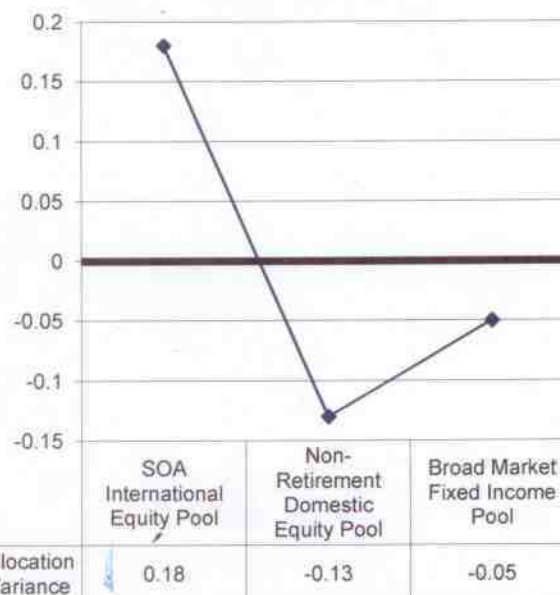


**EVOS Habitat Investment**  
Marketable Debt & Equitable Securities  
Actual Allocations



■ SOA International Equity Pool  
■ Non-Retirement Domestic Equity Pool  
□ Broad Market Fixed Income Pool

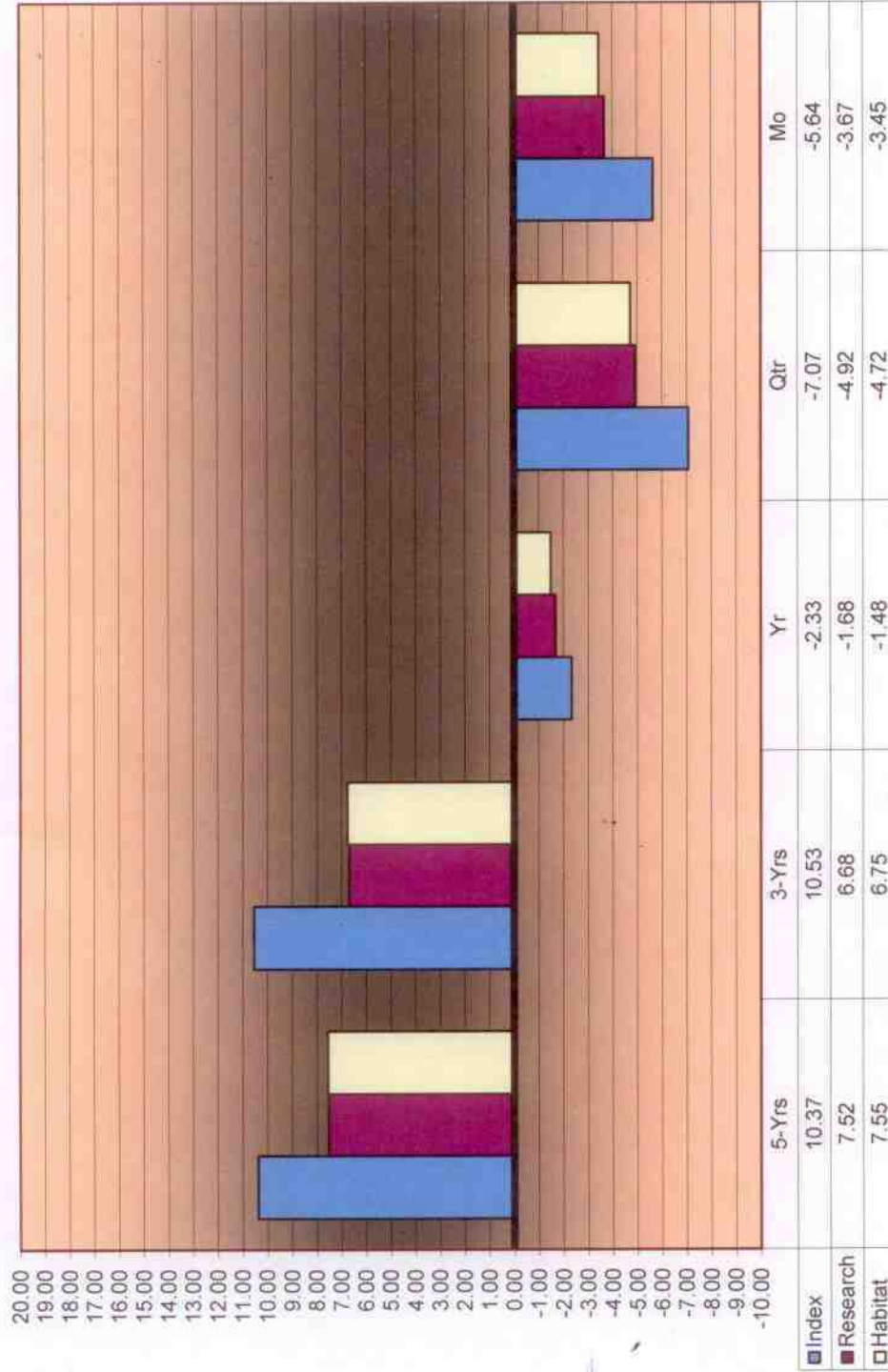
**EVOS Habitat Investment**  
Marketable Debt & Equitable Securities  
Allocation Variances



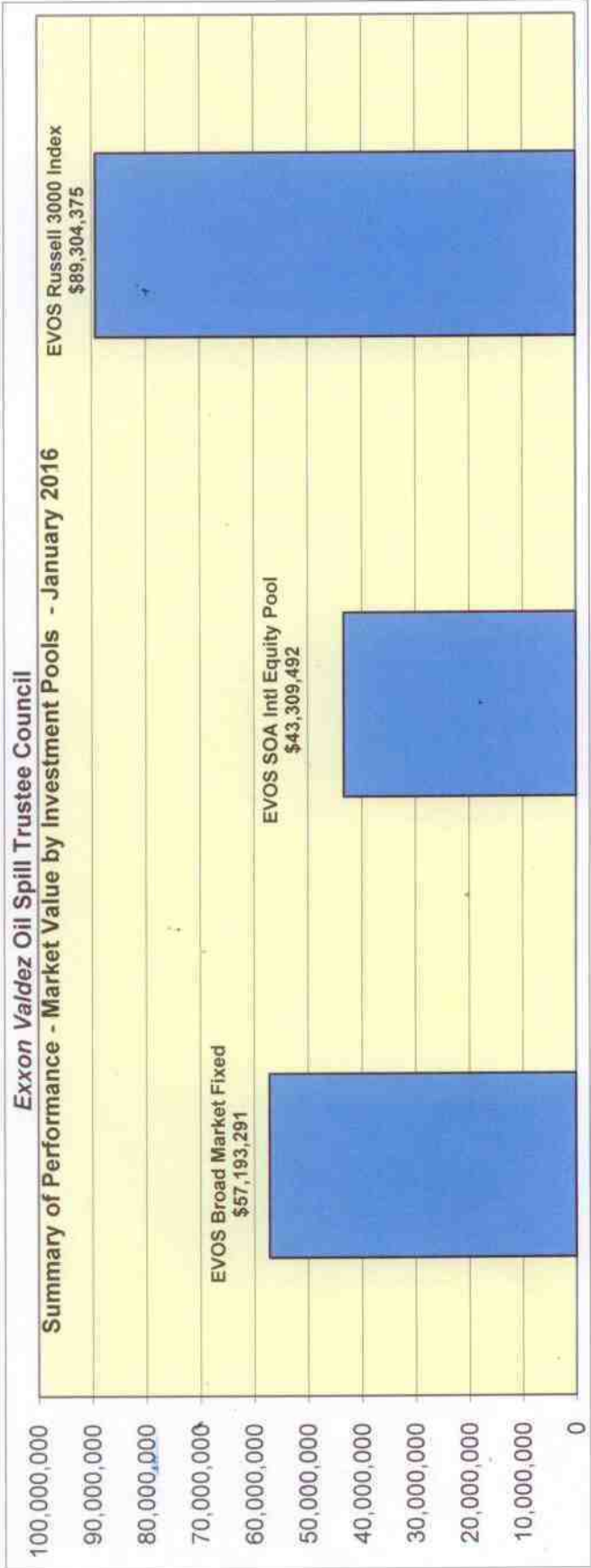
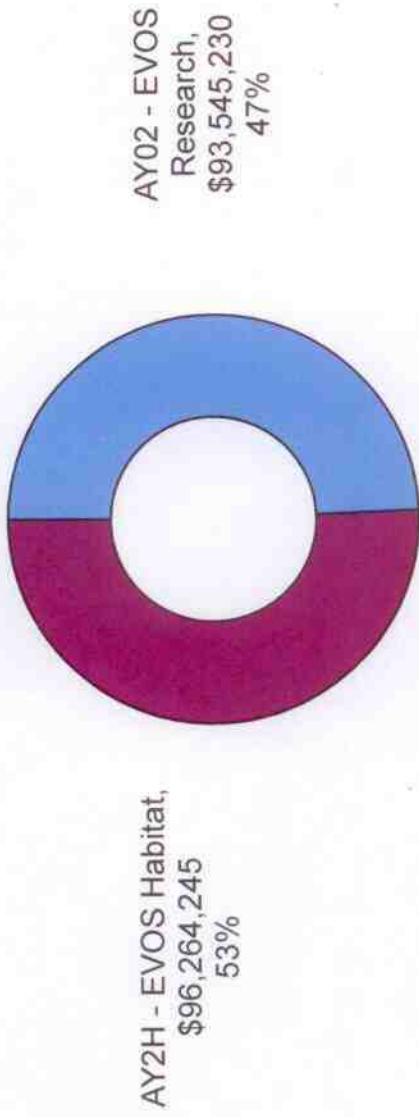
**(Konaig Agreement ended & remaining funds transfered to Habitat account)**



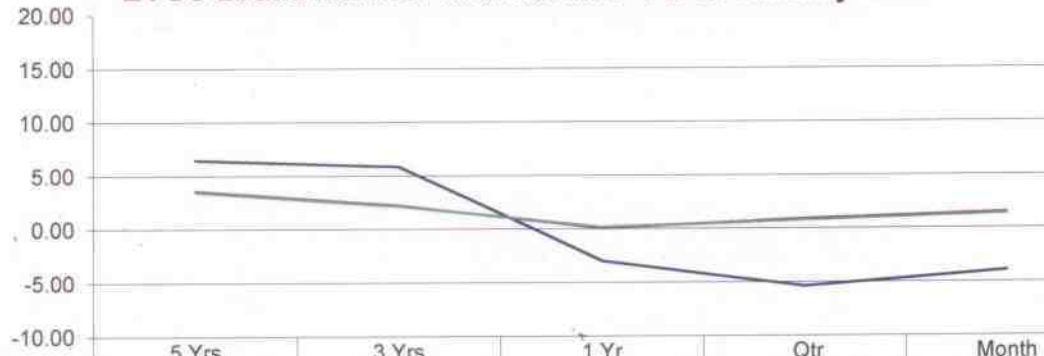
**Exxon Valdez Oil Spill Trustee Council**  
**Investment Fund Index**  
**Past 5 Yrs to Current Month of January 2016**



**Exxon Valdez Oil Spill Trustee Council**  
**Summary of Performance - Market Value by Sub-Accounts**  
**January 2016**

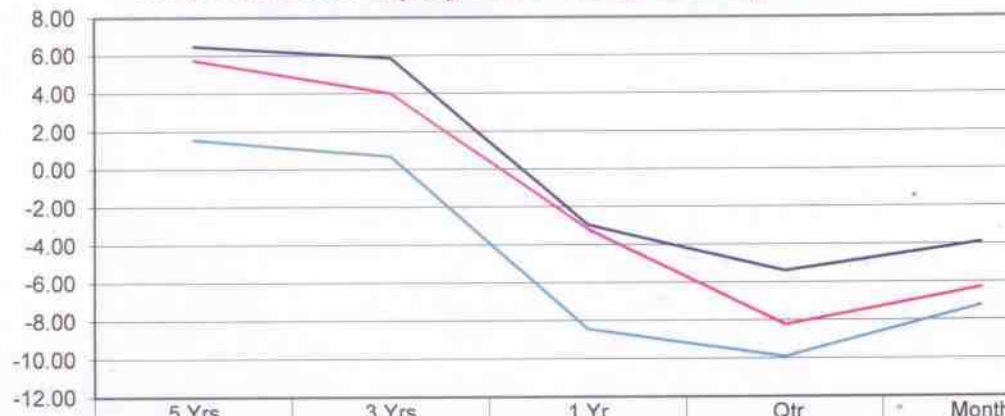


**Summary of Performance - Rates of Return  
EVOS Broad Market Fixed Income - As of January 2016**



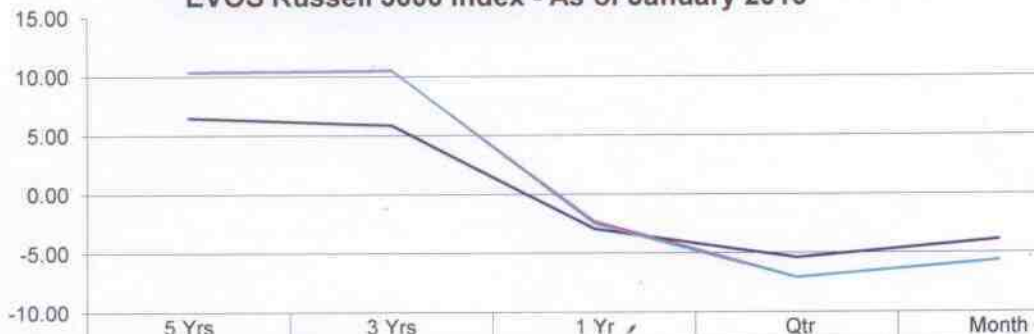
	5 Yrs	3 Yrs	1 Yr	Qtr	Month
Investment Fund Index	6.49	5.86	-2.94	-5.39	-3.90
Broad Market Fixed	3.61	2.21	0.07	0.92	1.47
XSL-BC Aggregate	3.51	2.15	0.16	0.78	1.38

**Summary of Performance - Rates of Return  
EVOS SOA Int'l Equity Pool - As of January 2016**



	5 Yrs	3 Yrs	1 Yr	Qtr	Month
Investment Fund Index	6.49	5.86	-2.94	-5.39	-3.90
SOA Int'l Equity Pool	5.74	4.00	-3.17	-8.24	-6.30
XCB - MSCI EAFE - (NET)	1.59	0.68	-8.43	-9.91	-7.23

**Summary of Performance - Rates of Return  
EVOS Russell 3000 Index - As of January 2016**



	5 Yrs	3 Yrs	1 Yr	Qtr	Month
Investment Fund Index	6.49	5.86	-2.94	-5.39	-3.90
Russell 3000 Index	10.37	10.53	-2.33	-7.07	-5.64
XF3 - Russell 3000	10.40	10.55	-2.48	-7.07	-5.64



Schedule  
Of  
Invested  
Income  
(Net Asset Value)



**EVOS Research Investment**  
**Net Asset Value**  
**As of the Month Ending**  
**January 29, 2016**

**Cash and Cash Equivalents**

Short-term Fixed Income Pool	\$ 524.76
ST Liquidity ( <i>Internally Managed</i> )	-
Total Cash and Cash Equivalents	<u>524.76</u>

**Fixed Income Securities**

Interim-term ( <i>Internally Managed</i> )	-
Broad-term ( <i>Internally Managed</i> )	28,187,028.56
Total fixed Income Securities	<u>28,187,028.56</u>

**Broad Domestic Equity**

SSgA Russell 3000	44,012,941.73
Total Broad Domestic Equity	<u>44,012,941.73</u>

**Global Equity Ex-U.S.**

SSgA MSCI EAFE Index Pool	-
Lazard International Equities	21,344,734.95
Total Global Equity Ex-U.S.	<u>21,344,734.95</u>

**Receivables and Payables**

Income Receivable	0.26
Payable To/From	-
Total Receivables and Payables	<u>0.26</u>

**Total Assets**

\$ 93,545,230.26

Total all accounts : \$189,809,475.48

**EVOS Habitat Investment**  
**Net Asset Value**  
**As of the Month Ending**  
**January 29, 2016**

<b>Cash and Cash Equivalents</b>	
Short-term Fixed Income Pool	\$ 87.65
ST Liquidity ( <i>Internally Managed</i> )	-
Total Cash and Cash Equivalents	<u>87.65</u>
<b>Fixed Income Securities</b>	
Interim-term ( <i>Internally Managed</i> )	-
Broad-term ( <i>Internally Managed</i> )	29,006,262.49
Total fixed Income Securities	<u>29,006,262.49</u>
<b>Broad Domestic Equity</b>	
SSgA Russell 3000	45,291,429.83
Total Broad Domestic Equity	<u>45,291,429.83</u>
<b>Global Equity Ex-U.S.</b>	
SSgA MSCI EAFE Index Pool	-
Lazard International Equities	21,964,757.10
Total Global Equity Ex-U.S.	<u>21,964,757.10</u>
<b>Receivables and Payables</b>	
Income Receivable/Payable	1,708.15
Payable To/From	-
Total Receivables and Payables	<u>1,708.15</u>
<b>Total Assets</b>	<u><u>\$ 96,264,245.22</u></u>

p. ② of ②

**EVOS Research Investment**  
**Net Asset Value**  
**As of the Month Ending**  
**December 31, 2015**

<b>Cash and Cash Equivalents</b>	
Short-term Fixed Income Pool	\$ 179.15
ST Liquidity ( <i>Internally Managed</i> )	-
Total Cash and Cash Equivalents	<u>179.15</u>
<b>Fixed Income Securities</b>	
Interim-term ( <i>Internally Managed</i> )	-
Broad-term ( <i>Internally Managed</i> )	29,066,774.98
Total fixed Income Securities	<u>29,066,774.98</u>
<b>Broad Domestic Equity</b>	
SSgA Russell 3000	45,675,919.55
Total Broad Domestic Equity	<u>45,675,919.55</u>
<b>Global Equity Ex-U.S.</b>	
SSgA MSCI EAFE Index Pool	-
Lazard International Equities	22,370,591.49
Total Global Equity Ex-U.S.	<u>22,370,591.49</u>
<b>Receivables and Payables</b>	
Income Receivable	345.61
Payable To/From	-
Total Receivables and Payables	<u>345.61</u>
<b>Total Assets</b>	<u><u>\$ 97,113,810.78</u></u>

Total all accounts: \$212,453,194.76

p. (1) of (2)

**EVOS Habitat Investment**  
**Net Asset Value**  
**As of the Month Ending**  
**December 31, 2015**

<b>Cash and Cash Equivalents</b>	
Short-term Fixed Income Pool	\$ 45.50
ST Liquidity ( <i>Internally Managed</i> )	-
Total Cash and Cash Equivalents	<u>45.50</u>
<b>Fixed Income Securities</b>	
Interim-term ( <i>Internally Managed</i> )	-
Broad-term ( <i>Internally Managed</i> )	<u>34,523,960.33</u>
Total fixed Income Securities	<u>34,523,960.33</u>
<b>Broad Domestic Equity</b>	
SSgA Russell 3000	<u>54,233,417.98</u>
Total Broad Domestic Equity	<u>54,233,417.98</u>
<b>Global Equity Ex-U.S.</b>	
SSgA MSCI EAFE Index Pool	-
Lazard International Equities	<u>26,581,918.02</u>
Total Global Equity Ex-U.S.	<u>26,581,918.02</u>
<b>Receivables and Payables</b>	
Income Receivable/Payable	42.15
Payable To/From	-
Total Receivables and Payables	<u>42.15</u>
<b>Total Assets</b>	<u><u>\$ 115,339,383.98</u></u>

p. ② of ②.

**EVOS Research Investment**  
**Net Asset Value**  
**As of the Month Ending**  
**November 30, 2015**

<b>Cash and Cash Equivalents</b>	
Short-term Fixed Income Pool	\$ 179.09
ST Liquidity ( <i>Internally Managed</i> )	-
Total Cash and Cash Equivalents	<u>179.09</u>
<b>Fixed Income Securities</b>	
Interim-term ( <i>Internally Managed</i> )	-
Broad-term ( <i>Internally Managed</i> )	32,108,981.67
Total fixed Income Securities	<u>32,108,981.67</u>
<b>Broad Domestic Equity</b>	
SSgA Russell 3000	49,068,939.23
Total Broad Domestic Equity	<u>49,068,939.23</u>
<b>Global Equity Ex-U.S.</b>	
SSgA MSCI EAFE Index Pool	-
Lazard International Equities	22,928,664.78
Total Global Equity Ex-U.S.	<u>22,928,664.78</u>
<b>Receivables and Payables</b>	
Income Receivable	0.06
Payable To/From	-
Total Receivables and Payables	<u>0.06</u>
<b>Total Assets</b>	<u><u>\$ 104,106,764.83</u></u>

Total all accts: \$ 221,736, 443.<sup>68</sup>

P. ① of ②



**EVOS Habitat Investment**  
**Net Asset Value**  
**As of the Month Ending**  
**November 30, 2015**

**Cash and Cash Equivalents**

Short-term Fixed Income Pool	\$ 45.50
ST Liquidity ( <i>Internally Managed</i> )	-
Total Cash and Cash Equivalents	<u>45.50</u>

**Fixed Income Securities**

Interim-term ( <i>Internally Managed</i> )	-
Broad-term ( <i>Internally Managed</i> )	36,275,859.94
Total fixed Income Securities	<u>36,275,859.94</u>

**Broad Domestic Equity**

SSgA Russell 3000	55,438,956.91
Total Broad Domestic Equity	<u>55,438,956.91</u>

**Global Equity Ex-U.S.**

SSgA MSCI EAFE Index Pool	-
Lazard International Equities	25,914,816.50
Total Global Equity Ex-U.S.	<u>25,914,816.50</u>

**Receivables and Payables**

Income Receivable/Payable	-
Payable To/From	-
Total Receivables and Payables	<u>-</u>

**Total Assets**

\$ 117,629,678.85

**EVOS Research Investment**  
**Net Asset Value**  
**As of the Month Ending**  
**October 30, 2015**

**Cash and Cash Equivalents**

Short-term Fixed Income Pool	\$ 179.03
ST Liquidity ( <i>Internally Managed</i> )	-
Total Cash and Cash Equivalents	<u>179.03</u>

**Fixed Income Securities**

Interim-term ( <i>Internally Managed</i> )	-
Broad-term ( <i>Internally Managed</i> )	32,184,668.68
Total fixed Income Securities	<u>32,184,668.68</u>

**Broad Domestic Equity**

SSgA Russell 3000	48,801,018.71
Total Broad Domestic Equity	<u>48,801,018.71</u>

**Global Equity Ex-U.S.**

SSgA MSCI EAFE Index Pool	-
Lazard International Equities	23,059,307.36
Total Global Equity Ex-U.S.	<u>23,059,307.36</u>

**Receivables and Payables**

Income Receivable	0.06
Payable To/From	-
Total Receivables and Payables	<u>0.06</u>

**Total Assets**

\$ 104,045,173.84

Total all accounts: \$ 221,605,317.41

**EVOS Habitat Investment**  
**Net Asset Value**  
**As of the Month Ending**  
**October 30, 2015**

**Cash and Cash Equivalents**

Short-term Fixed Income Pool	\$ 45.50
ST Liquidity ( <i>Internally Managed</i> )	-
Total Cash and Cash Equivalents	<u>45.50</u>

**Fixed Income Securities**

Interim-term ( <i>Internally Managed</i> )	-
Broad-term ( <i>Internally Managed</i> )	36,361,369.11
Total fixed Income Securities	<u>36,361,369.11</u>

**Broad Domestic Equity**

SSgA Russell 3000	55,136,255.57
Total Broad Domestic Equity	<u>55,136,255.57</u>

**Global Equity Ex-U.S.**

SSgA MSCI EAFE Index Pool	-
Lazard International Equities	26,062,473.45
Total Global Equity Ex-U.S.	<u>26,062,473.45</u>

**Receivables and Payables**

Income Receivable/Payable	-
Payable To/From	-
Total Receivables and Payables	<u>-</u>

**Total Assets**

\$ 117,560,143.63

p② of ②

**EVOS Research Investment**  
**Net Asset Value**  
**As of the Month Ending**  
**September 30, 2015**

**Cash and Cash Equivalents**

Short-term Fixed Income Pool	\$ 178.95
ST Liquidity ( <i>Internally Managed</i> )	-
Total Cash and Cash Equivalents	<u>178.95</u>

**Fixed Income Securities**

Interim-term ( <i>Internally Managed</i> )	-
Broad-term ( <i>Internally Managed</i> )	32,173,072.88
Total fixed Income Securities	<u>32,173,072.88</u>

**Broad Domestic Equity**

SSgA Russell 3000	45,224,984.68
Total Broad Domestic Equity	<u>45,224,984.68</u>

**Global Equity Ex-U.S.**

SSgA MSCI EAFE Index Pool	-
Lazard International Equities	21,694,609.85
Total Global Equity Ex-U.S.	<u>21,694,609.85</u>

**Receivables and Payables**

Income Receivable	0.08
Payable To/From	-
Total Receivables and Payables	<u>0.08</u>

**Total Assets**

\$ 99,092,846.44

Total all accounts: \$ 211,057,191.<sup>77</sup>

p. ① of ②

**EVOS Habitat Investment**  
**Net Asset Value**  
**As of the Month Ending**  
**September 30, 2015**

**Cash and Cash Equivalents**

Short-term Fixed Income Pool	\$ 45.50
ST Liquidity ( <i>Internally Managed</i> )	-
Total Cash and Cash Equivalents	<u>45.50</u>

**Fixed Income Securities**

Interim-term ( <i>Internally Managed</i> )	-
Broad-term ( <i>Internally Managed</i> )	36,348,268.55
Total fixed Income Securities	<u>36,348,268.55</u>

**Broad Domestic Equity**

SSgA Russell 3000	51,095,988.99
Total Broad Domestic Equity	<u>51,095,988.99</u>

**Global Equity Ex-U.S.**

SSgA MSCI EAFE Index Pool	-
Lazard International Equities	24,520,042.29
Total Global Equity Ex-U.S.	<u>24,520,042.29</u>

**Receivables and Payables**

Income Receivable/Payable	-
Payable To/From	-
Total Receivables and Payables	<u>-</u>

**Total Assets**

\$ 111,964,345.33

p. ② of ②



**EVOS Research Investment**  
**Net Asset Value**  
**As of the Month Ending**  
**August 31, 2015**

**Cash and Cash Equivalents**

Short-term Fixed Income Pool	\$ 171.84
ST Liquidity ( <i>Internally Managed</i> )	-
Total Cash and Cash Equivalents	<u>171.84</u>

**Fixed Income Securities**

Interim-term ( <i>Internally Managed</i> )	-
Broad-term ( <i>Internally Managed</i> )	31,942,798.08
Total fixed Income Securities	<u>31,942,798.08</u>

**Broad Domestic Equity**

SSgA Russell 3000	46,578,688.37
Total Broad Domestic Equity	<u>46,578,688.37</u>

**Global Equity Ex-U.S.**

SSgA MSCI EAFE Index Pool	-
Lazard International Equities	22,686,059.75
Total Global Equity Ex-U.S.	<u>22,686,059.75</u>

**Receivables and Payables**

Income Receivable	7.11
Payable To/From	-
Total Receivables and Payables	<u>7.11</u>

**Total Assets**

\$ 101,207,725.15

Total all accounts = \$ 215,561,923.66

P-① of ②

**EVOS Habitat Investment**  
**Net Asset Value**  
**As of the Month Ending**  
**August 31, 2015**

**Cash and Cash Equivalents**

Short-term Fixed Income Pool	\$ 37.58
ST Liquidity ( <i>Internally Managed</i> )	-
Total Cash and Cash Equivalents	<u>37.58</u>

**Fixed Income Securities**

Interim-term ( <i>Internally Managed</i> )	-
Broad-term ( <i>Internally Managed</i> )	36,088,110.31
Total fixed Income Securities	<u>36,088,110.31</u>

**Broad Domestic Equity**

SSgA Russell 3000	52,625,427.43
Total Broad Domestic Equity	<u>52,625,427.43</u>

**Global Equity Ex-U.S.**

SSgA MSCI EAFE Index Pool	-
Lazard International Equities	25,640,615.27
Total Global Equity Ex-U.S.	<u>25,640,615.27</u>

**Receivables and Payables**

Income Receivable/Payable	7.92
Payable To/From	-
Total Receivables and Payables	<u>7.92</u>

**Total Assets**

\$ 114,354,198.51

p. 2 of 2

**EVOS Research Investment  
Net Asset Value  
As of the Month Ending  
July 31, 2015**

**Cash and Cash Equivalents**

Short-term Fixed Income Pool	\$ 218.24
ST Liquidity ( <i>Internally Managed</i> )	-
Total Cash and Cash Equivalents	<u>218.24</u>

**Fixed Income Securities**

Interim-term ( <i>Internally Managed</i> )	-
Broad-term ( <i>Internally Managed</i> )	32,027,385.60
Total fixed Income Securities	<u>32,027,385.60</u>

**Broad Domestic Equity**

SSgA Russell 3000	49,568,117.44
Total Broad Domestic Equity	<u>49,568,117.44</u>

**Global Equity Ex-U.S.**

SSgA MSCI EAFE Index Pool	-
Lazard International Equities	24,252,155.47
Total Global Equity Ex-U.S.	<u>24,252,155.47</u>

**Receivables and Payables**

Income Receivable	(46.40)
Payable To/From	-
Total Receivables and Payables	<u>(46.40)</u>

**Total Assets**

\$ 105,847,830.35

Total all accounts: \$ 225,444,550.<sup>99</sup>

**EVOS Habitat Investment**  
**Net Asset Value**  
**As of the Month Ending**  
**July 31, 2015**

**Cash and Cash Equivalents**

Short-term Fixed Income Pool	\$ 88.66
ST Liquidity ( <i>Internally Managed</i> )	-
Total Cash and Cash Equivalents	<u>88.66</u>

**Fixed Income Securities**

Interim-term ( <i>Internally Managed</i> )	-
Broad-term ( <i>Internally Managed</i> )	36,183,071.83
Total fixed Income Securities	<u>36,183,071.83</u>

**Broad Domestic Equity**

SSgA Russell 3000	56,002,937.28
Total Broad Domestic Equity	<u>56,002,937.28</u>

**Global Equity Ex-U.S.**

SSgA MSCI EAFE Index Pool	-
Lazard International Equities	27,410,673.95
Total Global Equity Ex-U.S.	<u>27,410,673.95</u>

**Receivables and Payables**

Income Receivable/Payable	(51.08)
Payable To/From	-
Total Receivables and Payables	<u>(51.08)</u>

**Total Assets**

\$ 119,596,720.64

p. 2 of 2

**EVOS Research Investment**  
**Net Asset Value**  
**As of the Month Ending**  
**June 30, 2015**

<b>Cash and Cash Equivalents</b>	
Short-term Fixed Income Pool	\$ 218.20
ST Liquidity ( <i>Internally Managed</i> )	-
Total Cash and Cash Equivalents	<u>218.20</u>
<b>Fixed Income Securities</b>	
Interim-term ( <i>Internally Managed</i> )	-
Broad-term ( <i>Internally Managed</i> )	31,079,597.04
Total fixed Income Securities	<u>31,079,597.04</u>
<b>Broad Domestic Equity</b>	
SSgA Russell 3000	49,050,508.83
Total Broad Domestic Equity	<u>49,050,508.83</u>
<b>Global Equity Ex-U.S.</b>	
SSgA MSCI EAFE Index Pool	-
Lazard International Equities	25,342,124.75
Total Global Equity Ex-U.S.	<u>25,342,124.75</u>
<b>Receivables and Payables</b>	
Income Receivable	0.04
Payable To/From	-
Total Receivables and Payables	<u>0.04</u>
<b>Total Assets</b>	<u><u>\$ 105,472,448.86</u></u>

Total all accounts: \$223,193,795.<sup>75</sup>

p. 0 of (2)



**EVOS Habitat Investment**  
**Net Asset Value**  
**As of the Month Ending**  
**June 30, 2015**

**Cash and Cash Equivalents**

Short-term Fixed Income Pool	\$ 88.63
ST Liquidity ( <i>Internally Managed</i> )	-
Total Cash and Cash Equivalents	<u>88.63</u>

**Fixed Income Securities**

Interim-term ( <i>Internally Managed</i> )	-
Broad-term ( <i>Internally Managed</i> )	34,697,550.70
Total fixed Income Securities	<u>34,697,550.70</u>

**Broad Domestic Equity**

SSgA Russell 3000	55,145,229.27
Total Broad Domestic Equity	<u>55,145,229.27</u>

**Global Equity Ex-U.S.**

SSgA MSCI EAFE Index Pool	-
Lazard International Equities	27,878,478.26
Total Global Equity Ex-U.S.	<u>27,878,478.26</u>

**Receivables and Payables**

Income Receivable/Payable	0.03
Payable To/From	-
Total Receivables and Payables	<u>0.03</u>

**Total Assets**

\$ 117,721,346.89

p. (2) of (2).

**EVOS Research Investment**  
**Net Asset Value**  
**As of the Month Ending**  
**May 29, 2015**

**Cash and Cash Equivalents**

Short-term Fixed Income Pool	\$ 218.12
ST Liquidity ( <i>Internally Managed</i> )	-
Total Cash and Cash Equivalents	<u>218.12</u>

**Fixed Income Securities**

Interim-term ( <i>Internally Managed</i> )	-
Broad-term ( <i>Internally Managed</i> )	31,402,910.61
Total fixed Income Securities	<u>31,402,910.61</u>

**Broad Domestic Equity**

SSgA Russell 3000	49,896,869.45
Total Broad Domestic Equity	<u>49,896,869.45</u>

**Global Equity Ex-U.S.**

SSgA MSCI EAFE Index Pool	-
Lazard International Equities	25,755,541.28
Total Global Equity Ex-U.S.	<u>25,755,541.28</u>

**Receivables and Payables**

Income Receivable	0.08
Payable To/From	-
Total Receivables and Payables	<u>0.08</u>

**Total Assets**

\$ 107,055,539.54

Total All Accounts: \$226,544,154. <sup>16</sup>

p. ① of ②

**EVOS Habitat Investment**  
**Net Asset Value**  
**As of the Month Ending**  
**May 29, 2015**

**Cash and Cash Equivalents**

Short-term Fixed Income Pool	\$ 88.61
ST Liquidity ( <i>Internally Managed</i> )	-
Total Cash and Cash Equivalents	<u>88.61</u>

**Fixed Income Securities**

Interim-term ( <i>Internally Managed</i> )	-
Broad-term ( <i>Internally Managed</i> )	35,058,501.03
Total fixed Income Securities	<u>35,058,501.03</u>

**Broad Domestic Equity**

SSgA Russell 3000	56,096,753.57
Total Broad Domestic Equity	<u>56,096,753.57</u>

**Global Equity Ex-U.S.**

SSgA MSCI EAFE Index Pool	-
Lazard International Equities	28,333,271.39
Total Global Equity Ex-U.S.	<u>28,333,271.39</u>

**Receivables and Payables**

Income Receivable/Payable	0.02
Payable To/From	-
Total Receivables and Payables	<u>0.02</u>

**Total Assets**

\$ 119,488,614.62

p. ② of ②

**EVOS Research Investment**  
**Net Asset Value**  
**As of the Month Ending**  
**April 30, 2015**

<b>Cash and Cash Equivalents</b>	
Short-term Fixed Income Pool	\$ 218.02
ST Liquidity ( <i>Internally Managed</i> )	-
Total Cash and Cash Equivalents	<u>218.02</u>
<b>Fixed Income Securities</b>	
Interim-term ( <i>Internally Managed</i> )	-
Broad-term ( <i>Internally Managed</i> )	31,486,465.68
Total fixed Income Securities	<u>31,486,465.68</u>
<b>Broad Domestic Equity</b>	
SSgA Russell 3000	49,229,723.10
Total Broad Domestic Equity	<u>49,229,723.10</u>
<b>Global Equity Ex-U.S.</b>	
SSgA MSCI EAFE Index Pool	-
Lazard International Equities	25,672,471.71
Total Global Equity Ex-U.S.	<u>25,672,471.71</u>
<b>Receivables and Payables</b>	
Income Receivable	0.10
Payable To/From	-
Total Receivables and Payables	<u>0.10</u>
<b>Total Assets</b>	<u><u>\$ 106,388,878.61</u></u>

Total all accounts: \$ 225, 129, 349. <sup>38</sup>

p. ① of ②

**Net Asset Value**  
**As of the Month Ending**  
**April 30, 2015**

**Cash and Cash Equivalents**

Short-term Fixed Income Pool	\$ 88.60
ST Liquidity ( <i>Internally Managed</i> )	-
Total Cash and Cash Equivalents	<u>88.60</u>

**Fixed Income Securities**

Interim-term ( <i>Internally Managed</i> )	-
Broad-term ( <i>Internally Managed</i> )	35,151,782.64
Total fixed Income Securities	<u>35,151,782.64</u>

**Broad Domestic Equity**

SSgA Russell 3000	55,346,711.67
Total Broad Domestic Equity	<u>55,346,711.67</u>

**Global Equity Ex-U.S.**

SSgA MSCI EAFE Index Pool	-
Lazard International Equities	28,241,887.85
Total Global Equity Ex-U.S.	<u>28,241,887.85</u>

**Receivables and Payables**

Income Receivable/Payable	0.01
Payable To/From	-
Total Receivables and Payables	<u>0.01</u>

**Total Assets**

\$ 118,740,470.77



**EVOS Research Investment  
Net Asset Value  
As of the Month Ending  
March 31, 2015**

<b>Cash and Cash Equivalents</b>	
Short-term Fixed Income Pool	\$ 217.96
ST Liquidity ( <i>Internally Managed</i> )	-
Total Cash and Cash Equivalents	<u>217.96</u>
<b>Fixed Income Securities</b>	
Interim-term ( <i>Internally Managed</i> )	-
Broad-term ( <i>Internally Managed</i> )	31,609,053.97
Total fixed Income Securities	<u>31,609,053.97</u>
<b>Broad Domestic Equity</b>	
SSgA Russell 3000	49,005,448.38
Total Broad Domestic Equity	<u>49,005,448.38</u>
<b>Global Equity Ex-U.S.</b>	
SSgA MSCI EAFE Index Pool	-
Lazard International Equities	24,658,213.11
Total Global Equity Ex-U.S.	<u>24,658,213.11</u>
<b>Receivables and Payables</b>	
Income Receivable	0.06
Payable To/From	-
Total Receivables and Payables	<u>0.06</u>
<b>Total Assets</b>	<u><u>\$ 105,272,933.48</u></u>

Total all accounts: \$ 222,782,351.<sup>08</sup>

p. ① of ②

**EVOS Habitat Investment**  
**Net Asset Value**  
**As of the Month Ending**  
**March 31, 2015**

<b>Cash and Cash Equivalents</b>	
Short-term Fixed Income Pool	\$ 88.60
ST Liquidity ( <i>Internally Managed</i> )	-
Total Cash and Cash Equivalents	<u>88.60</u>
<b>Fixed Income Securities</b>	
Interim-term ( <i>Internally Managed</i> )	-
Broad-term ( <i>Internally Managed</i> )	<u>35,288,641.32</u>
Total fixed Income Securities	<u>35,288,641.32</u>
<b>Broad Domestic Equity</b>	
SSgA Russell 3000	<u>55,094,569.92</u>
Total Broad Domestic Equity	<u>55,094,569.92</u>
<b>Global Equity Ex-U.S.</b>	
SSgA MSCI EAFE Index Pool	-
Lazard International Equities	<u>27,126,117.76</u>
Total Global Equity Ex-U.S.	<u>27,126,117.76</u>
<b>Receivables and Payables</b>	
Income Receivable/Payable	-
Payable To/From	<u>-</u>
Total Receivables and Payables	<u>-</u>
<b>Total Assets</b>	<u><u>\$ 117,509,417.60</u></u>

p. ② of ②

**EVOS Research Investment**  
**Net Asset Value**  
**As of the Month Ending**  
**February 27, 2015**

<b>Cash and Cash Equivalents</b>	
Short-term Fixed Income Pool	\$ 217.91
ST Liquidity ( <i>Internally Managed</i> )	-
Total Cash and Cash Equivalents	<u>217.91</u>
<b>Fixed Income Securities</b>	
Interim-term ( <i>Internally Managed</i> )	-
Broad-term ( <i>Internally Managed</i> )	<u>31,456,662.19</u>
Total fixed Income Securities	<u>31,456,662.19</u>
<b>Broad Domestic Equity</b>	
SSgA Russell 3000	<u>49,507,937.34</u>
Total Broad Domestic Equity	<u>49,507,937.34</u>
<b>Global Equity Ex-U.S.</b>	
SSgA MSCI EAFE Index Pool	-
Lazard International Equities	<u>24,875,463.78</u>
Total Global Equity Ex-U.S.	<u>24,875,463.78</u>
<b>Receivables and Payables</b>	
Income Receivable	0.05
Payable To/From	-
Total Receivables and Payables	<u>0.05</u>
<b>Total Assets</b>	<u><u>\$ 105,840,281.27</u></u>

Total all accounts: \$ 223,983,486.<sup>60</sup>

p. ① of ②

**EVOS Habitat Investment**  
**Net Asset Value**  
**As of the Month Ending**  
**February 27, 2015**

**Cash and Cash Equivalents**

Short-term Fixed Income Pool	\$ 88.55
ST Liquidity ( <i>Internally Managed</i> )	-
Total Cash and Cash Equivalents	<u>88.55</u>

**Fixed Income Securities**

Interim-term ( <i>Internally Managed</i> )	-
Broad-term ( <i>Internally Managed</i> )	35,118,509.74
Total fixed Income Securities	<u>35,118,509.74</u>

**Broad Domestic Equity**

SSgA Russell 3000	55,659,495.13
Total Broad Domestic Equity	<u>55,659,495.13</u>

**Global Equity Ex-U.S.**

SSgA MSCI EAFE Index Pool	-
Lazard International Equities	27,365,111.86
Total Global Equity Ex-U.S.	<u>27,365,111.86</u>

**Receivables and Payables**

Income Receivable/Payable	0.05
Payable To/From	-
Total Receivables and Payables	<u>0.05</u>

**Total Assets**

\$ 118,143,205.33

p. (2) of (2)



Schedule of Investment  
Income (Loss) and  
Changes in Invested  
Assets

**EVOS Research Investment**  
**Schedule of Investment Income (Loss) and Changes in Invested Assets**  
**As of the Month Ending**  
**January 29, 2016**

	<u>1-Month</u>	<u>Fiscal YTD</u>
<b>Cash and Cash Equivalents</b>		
Short-term Fixed Income Pool	\$ 0.26	\$ 306.78
ST Liquidity ( <i>Internally Managed</i> )	-	-
	<u>0.26</u>	<u>306.78</u>
<b>Fixed Income Securities</b>		
Interim-term ( <i>Internally Managed</i> )	-	-
Broad-term ( <i>Internally Managed</i> )	415,143.58	661,301.96
	<u>415,143.58</u>	<u>661,301.96</u>
<b>Broad Domestic Equity</b>		
SSgA Russell 3000	(2,573,303.82)	(3,162,876.85)
	<u>(2,573,303.82)</u>	<u>(3,162,876.85)</u>
<b>Global Equity Ex-U.S.</b>		
SSgA MSCI EAFE Index Pool	-	-
Lazard International Equities	(1,410,420.54)	(2,521,100.38)
	<u>(1,410,420.54)</u>	<u>(2,521,100.38)</u>
<b>Total Investment Income (Loss)</b>	<b>\$ (3,568,580.52)</b>	<b>\$ (5,022,368.49)</b>
<b>Payable To/From</b>	-	-
<b>Total Invested Assets, Beginning of Period</b>	<b>97,113,810.78</b>	<b>105,472,448.86</b>
<b>Net Contribution (Withdrawal)</b>	-	(6,904,850.11)
<b>Total Assets</b>	<b><u>\$ 93,545,230.26</u></b>	<b><u>\$ 93,545,230.26</u></b>

Total Income (Loss) : (\$7,868,719.<sup>28</sup>)

Total all accounts: \$189,809,475.<sup>48</sup>



**EVOS Habitat Investment**  
**Schedule of Investment Income (Loss) and Changes in Invested Assets**  
**As of the Month Ending**  
**January 29, 2016**

	<u>1-Month</u>	<u>Fiscal YTD</u>
<b>Cash and Cash Equivalents</b>		
Short-term Fixed Income Pool	\$ 1,708.15	\$ 1,707.14
ST Liquidity ( <i>Internally Managed</i> )	-	-
	<u>1,708.15</u>	<u>1,707.14</u>
<b>Fixed Income Securities</b>		
Interim-term ( <i>Internally Managed</i> )	-	-
Broad-term ( <i>Internally Managed</i> )	454,299.16	730,812.24
	<u>454,299.16</u>	<u>730,812.24</u>
<b>Broad Domestic Equity</b>		
SSgA Russell 3000	(3,092,680.15)	(3,773,891.01)
	<u>(3,092,680.15)</u>	<u>(3,773,891.01)</u>
<b>Global Equity Ex-U.S.</b>		
SSgA MSCI EAFE Index Pool	-	-
Lazard International Equities	(1,663,465.92)	(2,913,071.27)
	<u>(1,663,465.92)</u>	<u>(2,913,071.27)</u>
<b>Total Investment Income (Loss)</b>	<b>\$ (4,300,138.76)</b>	<b>\$ (5,954,442.90)</b>
<b>Payable To/From</b>	-	-
<b>Total Invested Assets, Beginning of Period</b>	<b>115,339,383.98</b>	<b>117,721,346.89</b>
<b>Net Contribution (Withdrawal)</b>	<b>(14,775,000.00)</b>	<b>(15,502,658.77)</b>
<b>Total Assets</b>	<b><u>\$ 96,264,245.22</u></b>	<b><u>\$ 96,264,245.22</u></b>

**EVOS Research Investment**  
**Schedule of Investment Income (Loss) and Changes in Invested Assets**  
**As of the Month Ending**  
**December 31, 2015**

	<u>1-Month</u>	<u>Fiscal YTD</u>
<b>Cash and Cash Equivalents</b>		
Short-term Fixed Income Pool	\$ 345.61	\$ 306.52
ST Liquidity ( <i>Internally Managed</i> )	-	-
	<u>345.61</u>	<u>306.52</u>
<b>Fixed Income Securities</b>		
Interim-term ( <i>Internally Managed</i> )	-	-
Broad-term ( <i>Internally Managed</i> )	(91,730.69)	246,158.38
	<u>(91,730.69)</u>	<u>246,158.38</u>
<b>Broad Domestic Equity</b>		
SSgA Russell 3000	(993,800.68)	(589,573.03)
	<u>(993,800.68)</u>	<u>(589,573.03)</u>
<b>Global Equity Ex-U.S.</b>		
SSgA MSCI EAFE Index Pool	-	-
Lazard International Equities	(347,114.29)	(1,110,679.84)
	<u>(347,114.29)</u>	<u>(1,110,679.84)</u>
<b>Total Investment Income (Loss)</b>	<b>\$ (1,432,300.05)</b>	<b>\$ (1,453,787.97)</b>
<b>Payable To/From</b>	-	-
<b>Total Invested Assets, Beginning of Period</b>	<b>104,106,764.83</b>	<b>105,472,448.86</b>
<b>Net Contribution (Withdrawal)</b>	<b>(5,560,654.00)</b>	<b>(6,904,850.11)</b>
<b>Total Assets</b>	<b><u>\$ 97,113,810.78</u></b>	<b><u>\$ 97,113,810.78</u></b>

Total income/(loss): (\$3,044,264.<sup>92</sup>)

Total all accounts: 212,453,194.<sup>76</sup>

p. ① of ②.

**EVOS Habitat Investment**  
**Schedule of Investment Income (Loss) and Changes in Invested Assets**  
**As of the Month Ending**  
**December 31, 2015**

	<u>1-Month</u>	<u>Fiscal YTD</u>
<b>Cash and Cash Equivalents</b>		
Short-term Fixed Income Pool	\$ 42.15	\$ (1.01)
ST Liquidity ( <i>Internally Managed</i> )	-	-
	<u>42.15</u>	<u>(1.01)</u>
<b>Fixed Income Securities</b>		
Interim-term ( <i>Internally Managed</i> )	-	-
Broad-term ( <i>Internally Managed</i> )	(103,611.61)	276,513.08
	<u>(103,611.61)</u>	<u>276,513.08</u>
<b>Broad Domestic Equity</b>		
SSgA Russell 3000	(1,132,527.93)	(681,210.86)
	<u>(1,132,527.93)</u>	<u>(681,210.86)</u>
<b>Global Equity Ex-U.S.</b>		
SSgA MSCI EAFE Index Pool	-	-
Lazard International Equities	(375,867.48)	(1,249,605.35)
	<u>(375,867.48)</u>	<u>(1,249,605.35)</u>
<b>Total Investment Income (Loss)</b>	<b>\$ (1,611,964.87)</b>	<b>\$ (1,654,304.14)</b>
<b>Payable To/From</b>	-	-
<b>Total Invested Assets, Beginning of Period</b>	<b>117,629,678.85</b>	<b>117,721,346.89</b>
<b>Net Contribution (Withdrawal)</b>	<b>(678,330.00)</b>	<b>(727,658.77)</b>
<b>Total Assets</b>	<b><u>\$ 115,339,383.98</u></b>	<b><u>\$ 115,339,383.98</u></b>

p. 2 of 2

**EVOS Research Investment**  
**Schedule of Investment Income (Loss) and Changes in Invested Assets**  
**As of the Month Ending**  
**November 30, 2015**

	<u>1-Month</u>	<u>Fiscal YTD</u>
<b>Cash and Cash Equivalents</b>		
Short-term Fixed Income Pool	\$ 0.06	\$ (39.09)
ST Liquidity ( <i>Internally Managed</i> )	-	-
	<u>0.06</u>	<u>(39.09)</u>
<b>Fixed Income Securities</b>		
Interim-term ( <i>Internally Managed</i> )	-	-
Broad-term ( <i>Internally Managed</i> )	(75,687.01)	337,889.07
	<u>(75,687.01)</u>	<u>337,889.07</u>
<b>Broad Domestic Equity</b>		
SSgA Russell 3000	267,920.52	404,227.65
	<u>267,920.52</u>	<u>404,227.65</u>
<b>Global Equity Ex-U.S.</b>		
SSgA MSCI EAFE Index Pool	-	-
Lazard International Equities	(130,642.58)	(763,565.55)
	<u>(130,642.58)</u>	<u>(763,565.55)</u>
<b>Total Investment Income (Loss)</b>	<b>\$ 61,590.99</b>	<b>\$ (21,487.92)</b>
<b>Payable To/From</b>	-	-
<b>Total Invested Assets, Beginning of Period</b>	<b>104,045,173.84</b>	<b>105,472,448.86</b>
<b>Net Contribution (Withdrawal)</b>	-	<b>(1,344,196.11)</b>
<b>Total Assets</b>	<b><u>\$ 104,106,764.83</u></b>	<b><u>\$ 104,106,764.83</u></b>

Total income (loss): \$ 131,126.<sup>21</sup>

Total all accts: \$ 221,736,443.<sup>68</sup>

p. ① of ②

**EVOS Habitat Investment**  
**Schedule of Investment Income (Loss) and Changes in Invested Assets**  
**As of the Month Ending**  
**November 30, 2015**

	<u>1-Month</u>	<u>Fiscal YTD</u>
<b>Cash and Cash Equivalents</b>		
Short-term Fixed Income Pool	\$ -	\$ (43.16)
ST Liquidity ( <i>Internally Managed</i> )	-	-
	<u>-</u>	<u>(43.16)</u>
<b>Fixed Income Securities</b>		
Interim-term ( <i>Internally Managed</i> )	-	-
Broad-term ( <i>Internally Managed</i> )	(85,509.17)	380,124.69
	<u>(85,509.17)</u>	<u>380,124.69</u>
<b>Broad Domestic Equity</b>		
SSgA Russell 3000	302,701.34	451,317.07
	<u>302,701.34</u>	<u>451,317.07</u>
<b>Global Equity Ex-U.S.</b>		
SSgA MSCI EAFE Index Pool	-	-
Lazard International Equities	(147,656.95)	(873,737.87)
	<u>(147,656.95)</u>	<u>(873,737.87)</u>
<b>Total Investment Income (Loss)</b>	<b>\$ 69,535.22</b>	<b>\$ (42,339.27)</b>
<b>Payable To/From</b>	-	-
<b>Total Invested Assets, Beginning of Period</b>	<b>117,560,143.63</b>	<b>117,721,346.89</b>
<b>Net Contribution (Withdrawal)</b>	-	<b>(49,328.77)</b>
<b>Total Assets</b>	<b><u>\$ 117,629,678.85</u></b>	<b><u>\$ 117,629,678.85</u></b>

p. (2) of (2)



**EVOS Research Investment**  
**Schedule of Investment Income (Loss) and Changes in Invested Assets**  
**As of the Month Ending**  
**October 30, 2015**

	<u>1-Month</u>	<u>Fiscal YTD</u>
<b>Cash and Cash Equivalents</b>		
Short-term Fixed Income Pool	\$ 0.06	\$ (39.15)
ST Liquidity ( <i>Internally Managed</i> )	-	-
	<u>0.06</u>	<u>(39.15)</u>
<b>Fixed Income Securities</b>		
Interim-term ( <i>Internally Managed</i> )	-	-
Broad-term ( <i>Internally Managed</i> )	11,595.80	413,576.08
	<u>11,595.80</u>	<u>413,576.08</u>
<b>Broad Domestic Equity</b>		
SSgA Russell 3000	3,576,034.03	136,307.13
	<u>3,576,034.03</u>	<u>136,307.13</u>
<b>Global Equity Ex-U.S.</b>		
SSgA MSCI EAFE Index Pool	-	-
Lazard International Equities	1,364,697.51	(632,922.97)
	<u>1,364,697.51</u>	<u>(632,922.97)</u>
<b>Total Investment Income (Loss)</b>	<b>\$ 4,952,327.40</b>	<b>\$ (83,078.91)</b>
<b>Payable To/From</b>	-	-
<b>Total Invested Assets, Beginning of Period</b>	<b>99,092,846.44</b>	<b>105,472,448.86</b>
<b>Net Contribution (Withdrawal)</b>	-	<b>(1,344,196.11)</b>
<b>Total Assets</b>	<b><u>\$ 104,045,173.84</u></b>	<b><u>\$ 104,045,173.84</u></b>

Total Income (Loss): \$10,548,125.<sup>70</sup>

Total all accounts: \$221,605,317.<sup>47</sup>



**EVOS Habitat Investment**  
**Schedule of Investment Income (Loss) and Changes in Invested Assets**  
**As of the Month Ending**  
**October 30, 2015**

	<u>1-Month</u>	<u>Fiscal YTD</u>
<b>Cash and Cash Equivalents</b>		
Short-term Fixed Income Pool	\$ -	\$ (43.16)
ST Liquidity ( <i>Internally Managed</i> )	-	-
	<u>-</u>	<u>(43.16)</u>
<b>Fixed Income Securities</b>		
Interim-term ( <i>Internally Managed</i> )	-	-
Broad-term ( <i>Internally Managed</i> )	13,100.56	465,633.86
	<u>13,100.56</u>	<u>465,633.86</u>
<b>Broad Domestic Equity</b>		
SSgA Russell 3000	4,040,266.58	148,615.73
	<u>4,040,266.58</u>	<u>148,615.73</u>
<b>Global Equity Ex-U.S.</b>		
SSgA MSCI EAFE Index Pool	-	-
Lazard International Equities	1,542,431.16	(726,080.92)
	<u>1,542,431.16</u>	<u>(726,080.92)</u>
<b>Total Investment Income (Loss)</b>	<b>\$ 5,595,798.30</b>	<b>\$ (111,874.49)</b>
<b>Payable To/From</b>	-	-
<b>Total Invested Assets, Beginning of Period</b>	<b>111,964,345.33</b>	<b>117,721,346.89</b>
<b>Net Contribution (Withdrawal)</b>	-	<b>(49,328.77)</b>
<b>Total Assets</b>	<b><u>\$ 117,560,143.63</u></b>	<b><u>\$ 117,560,143.63</u></b>

**EVOS Research Investment**  
**Schedule of Investment Income (Loss) and Changes in Invested Assets**  
**As of the Month Ending**  
**September 30, 2015**

	<u>1-Month</u>	<u>Fiscal YTD</u>
<b>Cash and Cash Equivalents</b>		
Short-term Fixed Income Pool	\$ 0.08	\$ (39.21)
ST Liquidity ( <i>Internally Managed</i> )	-	-
	<u>0.08</u>	<u>(39.21)</u>
<b>Fixed Income Securities</b>		
Interim-term ( <i>Internally Managed</i> )	-	-
Broad-term ( <i>Internally Managed</i> )	230,274.80	401,980.28
	<u>230,274.80</u>	<u>401,980.28</u>
<b>Broad Domestic Equity</b>		
SSgA Russell 3000	(1,353,703.69)	(3,439,726.90)
	<u>(1,353,703.69)</u>	<u>(3,439,726.90)</u>
<b>Global Equity Ex-U.S.</b>		
SSgA MSCI EAFE Index Pool	-	-
Lazard International Equities	(991,449.90)	(1,997,620.48)
	<u>(991,449.90)</u>	<u>(1,997,620.48)</u>
<b>Total Investment Income (Loss)</b>	<b>\$ (2,114,878.71)</b>	<b>\$ (5,035,406.31)</b>
<b>Payable To/From</b>	-	-
<b>Total Invested Assets, Beginning of Period</b>	<b>101,207,725.15</b>	<b>105,472,448.86</b>
<b>Net Contribution (Withdrawal)</b>	-	<b>(1,344,196.11)</b>
<b>Total Assets</b>	<b><u>\$ 99,092,846.44</u></b>	<b><u>\$ 99,092,846.44</u></b>

Total Income (Loss): (\$ 4,584,732)

Total all accounts: \$211,057,191.<sup>77</sup>

p. ① of ②

**EVOS Habitat Investment**  
**Schedule of Investment Income (Loss) and Changes in Invested Assets**  
**As of the Month Ending**  
**September 30, 2015**

	<u>1-Month</u>	<u>Fiscal YTD</u>
<b>Cash and Cash Equivalents</b>		
Short-term Fixed Income Pool	\$ -	\$ (43.16)
ST Liquidity ( <i>Internally Managed</i> )	-	-
	<u>-</u>	<u>(43.16)</u>
<b>Fixed Income Securities</b>		
Interim-term ( <i>Internally Managed</i> )	-	-
Broad-term ( <i>Internally Managed</i> )	260,158.24	452,533.30
	<u>260,158.24</u>	<u>452,533.30</u>
<b>Broad Domestic Equity</b>		
SSgA Russell 3000	(1,529,438.44)	(3,891,650.85)
	<u>(1,529,438.44)</u>	<u>(3,891,650.85)</u>
<b>Global Equity Ex-U.S.</b>		
SSgA MSCI EAFE Index Pool	-	-
Lazard International Equities	(1,120,572.98)	(2,268,512.08)
	<u>(1,120,572.98)</u>	<u>(2,268,512.08)</u>
<b>Total Investment Income (Loss)</b>	<b>\$ (2,389,853.18)</b>	<b>\$ (5,707,672.79)</b>
<b>Payable To/From</b>	-	-
<b>Total Invested Assets, Beginning of Period</b>	<b>114,354,198.51</b>	<b>117,721,346.89</b>
<b>Net Contribution (Withdrawal)</b>	-	<b>(49,328.77)</b>
<b>Total Assets</b>	<b><u>\$ 111,964,345.33</u></b>	<b><u>\$ 111,964,345.33</u></b>

p. 2 of 2

**EVOS Research Investment**  
**Schedule of Investment Income (Loss) and Changes in Invested Assets**  
**As of the Month Ending**  
**August 31, 2015**

	<u>1-Month</u>	<u>Fiscal YTD</u>
<b>Cash and Cash Equivalents</b>		
Short-term Fixed Income Pool	\$ 7.11	\$ (39.29)
ST Liquidity ( <i>Internally Managed</i> )	-	-
	<u>7.11</u>	<u>(39.29)</u>
<b>Fixed Income Securities</b>		
Interim-term ( <i>Internally Managed</i> )	-	-
Broad-term ( <i>Internally Managed</i> )	(40,391.41)	171,705.48
	<u>(40,391.41)</u>	<u>171,705.48</u>
<b>Broad Domestic Equity</b>		
SSgA Russell 3000	(2,989,429.07)	(2,086,023.21)
	<u>(2,989,429.07)</u>	<u>(2,086,023.21)</u>
<b>Global Equity Ex-U.S.</b>		
SSgA MSCI EAFE Index Pool	-	-
Lazard International Equities	(1,566,095.72)	(1,006,170.58)
	<u>(1,566,095.72)</u>	<u>(1,006,170.58)</u>
<b>Total Investment Income (Loss)</b>	<b>\$ (4,595,909.09)</b>	<b>\$ (2,920,527.60)</b>
<b>Payable To/From</b>	-	-
<b>Total Invested Assets, Beginning of Period</b>	<b>105,847,830.35</b>	<b>105,472,448.86</b>
<b>Net Contribution (Withdrawal)</b>	<b>(44,196.11)</b>	<b>(1,344,196.11)</b>
<b>Total Assets</b>	<b><u>\$ 101,207,725.15</u></b>	<b><u>\$ 101,207,725.15</u></b>

Total income(loss): \$(9,789,102.<sup>45</sup>)

Total all accounts: \$ 215,561,923.<sup>66</sup>

P. ① of ②

**EVOS Habitat Investment**  
**Schedule of Investment Income (Loss) and Changes in Invested Assets**  
**As of the Month Ending**  
**August 31, 2015**

	<u>1-Month</u>	<u>Fiscal YTD</u>
<b>Cash and Cash Equivalents</b>		
Short-term Fixed Income Pool	\$ 7.92	\$ (43.16)
ST Liquidity <i>(Internally Managed)</i>	-	-
	<u>7.92</u>	<u>(43.16)</u>
<b>Fixed Income Securities</b>		
Interim-term <i>(Internally Managed)</i>	-	-
Broad-term <i>(Internally Managed)</i>	(45,632.75)	192,375.06
	<u>(45,632.75)</u>	<u>192,375.06</u>
<b>Broad Domestic Equity</b>		
SSgA Russell 3000	(3,377,509.85)	(2,362,212.41)
	<u>(3,377,509.85)</u>	<u>(2,362,212.41)</u>
<b>Global Equity Ex-U.S.</b>		
SSgA MSCI EAFE Index Pool	-	-
Lazard International Equities	(1,770,058.68)	(1,147,939.10)
	<u>(1,770,058.68)</u>	<u>(1,147,939.10)</u>
<b>Total Investment Income (Loss)</b>	<b>\$ (5,193,193.36)</b>	<b>\$ (3,317,819.61)</b>
<b>Payable To/From</b>	-	-
<b>Total Invested Assets, Beginning of Period</b>	<b>119,596,720.64</b>	<b>117,721,346.89</b>
<b>Net Contribution (Withdrawal)</b>	<b>(49,328.77)</b>	<b>(49,328.77)</b>
<b>Total Assets</b>	<b><u>\$ 114,354,198.51</u></b>	<b><u>\$ 114,354,198.51</u></b>

P. 2 of 2



**EVOS Research Investment**  
**Schedule of Investment Income (Loss) and Changes in Invested Assets**  
**As of the Month Ending**  
**July 31, 2015**

	<u>1-Month</u>	<u>Fiscal YTD</u>
<b>Cash and Cash Equivalents</b>		
Short-term Fixed Income Pool	\$ (46.40)	\$ (46.40)
ST Liquidity ( <i>Internally Managed</i> )	-	-
	<u>(46.40)</u>	<u>(46.40)</u>
<b>Fixed Income Securities</b>		
Interim-term ( <i>Internally Managed</i> )	-	-
Broad-term ( <i>Internally Managed</i> )	212,096.89	212,096.89
	<u>212,096.89</u>	<u>212,096.89</u>
<b>Broad Domestic Equity</b>		
SSgA Russell 3000	903,405.86	903,405.86
	<u>903,405.86</u>	<u>903,405.86</u>
<b>Global Equity Ex-U.S.</b>		
SSgA MSCI EAFE Index Pool	-	-
Lazard International Equities	559,925.14	559,925.14
	<u>559,925.14</u>	<u>559,925.14</u>
<b>Total Investment Income (Loss)</b>	<b>\$ 1,675,381.49</b>	<b>\$ 1,675,381.49</b>
<b>Payable To/From</b>	-	-
<b>Total Invested Assets, Beginning of Period</b>	<b>105,472,448.86</b>	<b>105,472,448.86</b>
<b>Net Contribution (Withdrawal)</b>	<b>(1,300,000.00)</b>	<b>(1,300,000.00)</b>
<b>Total Assets</b>	<b><u>\$ 105,847,830.35</u></b>	<b><u>\$ 105,847,830.35</u></b>

Total income(loss): \$ 3,550,755.<sup>24</sup>

Total all accounts: \$ 225,444,550.<sup>99</sup>

p. 0 of 2



**EVOS Habitat Investment**  
**Schedule of Investment Income (Loss) and Changes in Invested Assets**  
**As of the Month Ending**  
**July 31, 2015**

	<u>1-Month</u>	<u>Fiscal YTD</u>
<b>Cash and Cash Equivalents</b>		
Short-term Fixed Income Pool	\$ (51.08)	\$ (51.08)
ST Liquidity ( <i>Internally Managed</i> )	-	-
	<u>(51.08)</u>	<u>(51.08)</u>
<b>Fixed Income Securities</b>		
Interim-term ( <i>Internally Managed</i> )	-	-
Broad-term ( <i>Internally Managed</i> )	238,007.81	238,007.81
	<u>238,007.81</u>	<u>238,007.81</u>
<b>Broad Domestic Equity</b>		
SSgA Russell 3000	1,015,297.44	1,015,297.44
	<u>1,015,297.44</u>	<u>1,015,297.44</u>
<b>Global Equity Ex-U.S.</b>		
SSgA MSCI EAFE Index Pool	-	-
Lazard International Equities	622,119.58	622,119.58
	<u>622,119.58</u>	<u>622,119.58</u>
<b>Total Investment Income (Loss)</b>	<b>\$ 1,875,373.75</b>	<b>\$ 1,875,373.75</b>
<b>Payable To/From</b>	-	-
<b>Total Invested Assets, Beginning of Period</b>	<b>117,721,346.89</b>	<b>117,721,346.89</b>
<b>Net Contribution (Withdrawal)</b>	-	-
<b>Total Assets</b>	<b><u>\$ 119,596,720.64</u></b>	<b><u>\$ 119,596,720.64</u></b>

p. 2 of 2

**EVOS Research Investment**  
**Schedule of Investment Income (Loss) and Changes in Invested Assets**  
**As of the Month Ending**  
**June 30, 2015**

	<u>1-Month</u>	<u>Fiscal YTD</u>
<b>Cash and Cash Equivalents</b>		
Short-term Fixed Income Pool	\$ 0.04	\$ (116.92)
ST Liquidity ( <i>Internally Managed</i> )	-	-
	<u>0.04</u>	<u>(116.92)</u>
<b>Fixed Income Securities</b>		
Interim-term ( <i>Internally Managed</i> )	-	-
Broad-term ( <i>Internally Managed</i> )	(323,313.57)	645,103.68
	<u>(323,313.57)</u>	<u>645,103.68</u>
<b>Broad Domestic Equity</b>		
SSgA Russell 3000	(846,360.62)	3,610,377.19
	<u>(846,360.62)</u>	<u>3,610,377.19</u>
<b>Global Equity Ex-U.S.</b>		
SSgA MSCI EAFE Index Pool	-	-
Lazard International Equities	(413,416.53)	166,475.67
	<u>(413,416.53)</u>	<u>166,475.67</u>
<b>Total Investment Income (Loss)</b>	<b>\$ (1,583,090.68)</b>	<b>\$ 4,421,839.62</b>
<b>Payable To/From</b>	-	-
<b>Total Invested Assets, Beginning of Period</b>	<b>107,055,539.54</b>	<b>108,205,151.98</b>
<b>Net Contribution (Withdrawal)</b>	-	<b>(7,154,542.74)</b>
<b>Total Assets</b>	<b><u>\$ 105,472,448.86</u></b>	<b><u>\$ 105,472,448.86</u></b>

Total Income (Loss): (\$3,353,358.<sup>41</sup>)

Total all accounts: \$223,193,795.<sup>75</sup>

p. ① of ②

**EVOS Habitat Investment**  
**Schedule of Investment Income (Loss) and Changes in Invested Assets**  
**As of the Month Ending**  
**June 30, 2015**

	<u>1-Month</u>	<u>Fiscal YTD</u>
<b>Cash and Cash Equivalents</b>		
Short-term Fixed Income Pool	\$ 0.03	\$ (28.26)
ST Liquidity ( <i>Internally Managed</i> )	-	-
	<u>0.03</u>	<u>(28.26)</u>
<b>Fixed Income Securities</b>		
Interim-term ( <i>Internally Managed</i> )	-	-
Broad-term ( <i>Internally Managed</i> )	(360,950.33)	694,181.89
	<u>(360,950.33)</u>	<u>694,181.89</u>
<b>Broad Domestic Equity</b>		
SSgA Russell 3000	(951,524.30)	3,875,307.79
	<u>(951,524.30)</u>	<u>3,875,307.79</u>
<b>Global Equity Ex-U.S.</b>		
SSgA MSCI EAFE Index Pool	-	-
Lazard International Equities	(454,793.13)	231,083.56
	<u>(454,793.13)</u>	<u>231,083.56</u>
<b>Total Investment Income (Loss)</b>	<b>\$ (1,767,267.73)</b>	<b>\$ 4,800,544.98</b>
<b>Payable To/From</b>	-	-
<b>Total Invested Assets, Beginning of Period</b>	<b>119,488,614.62</b>	<b>114,737,187.16</b>
<b>Net Contribution (Withdrawal)</b>	-	<b>(1,816,385.25)</b>
<b>Total Assets</b>	<b><u>\$ 117,721,346.89</u></b>	<b><u>\$ 117,721,346.89</u></b>

p. 2 of 2

**EVOS Research Investment**  
**Schedule of Investment Income (Loss) and Changes in Invested Assets**  
**As of the Month Ending**  
**May 29, 2015**

	<u>1-Month</u>	<u>Fiscal YTD</u>
<b>Cash and Cash Equivalents</b>		
Short-term Fixed Income Pool	\$ 0.08	\$ (116.96)
ST Liquidity ( <i>Internally Managed</i> )	-	-
	<u>0.08</u>	<u>(116.96)</u>
<b>Fixed Income Securities</b>		
Interim-term ( <i>Internally Managed</i> )	-	-
Broad-term ( <i>Internally Managed</i> )	(83,555.07)	968,417.25
	<u>(83,555.07)</u>	<u>968,417.25</u>
<b>Broad Domestic Equity</b>		
SSgA Russell 3000	667,146.35	4,456,737.81
	<u>667,146.35</u>	<u>4,456,737.81</u>
<b>Global Equity Ex-U.S.</b>		
SSgA MSCI EAFE Index Pool	-	-
Lazard International Equities	83,069.57	579,892.20
	<u>83,069.57</u>	<u>579,892.20</u>
<b>Total Investment Income (Loss)</b>	<b>\$ 666,660.93</b>	<b>\$ 6,004,930.30</b>
<b>Payable To/From</b>	-	-
<b>Total Invested Assets, Beginning of Period</b>	<b>106,388,878.61</b>	<b>108,205,151.98</b>
<b>Net Contribution (Withdrawal)</b>	-	<b>(7,154,542.74)</b>
<b>Total Assets</b>	<b><u>\$ 107,055,539.54</u></b>	<b><u>\$ 107,055,539.54</u></b>

Total Income/(Loss): \$ 814,804.78

Total All Accounts: \$ 226,544,154.16

p. ① of ②

**EVOS Habitat Investment**  
**Schedule of Investment Income (Loss) and Changes in Invested Assets**  
**As of the Month Ending**  
**May 29, 2015**

	<u>1-Month</u>	<u>Fiscal YTD</u>
<b>Cash and Cash Equivalents</b>		
Short-term Fixed Income Pool	\$ 0.02	\$ (28.29)
ST Liquidity ( <i>Internally Managed</i> )	-	-
	<u>0.02</u>	<u>(28.29)</u>
<b>Fixed Income Securities</b>		
Interim-term ( <i>Internally Managed</i> )	-	-
Broad-term ( <i>Internally Managed</i> )	(93,281.61)	1,055,132.22
	<u>(93,281.61)</u>	<u>1,055,132.22</u>
<b>Broad Domestic Equity</b>		
SSgA Russell 3000	750,041.90	4,826,832.09
	<u>750,041.90</u>	<u>4,826,832.09</u>
<b>Global Equity Ex-U.S.</b>		
SSgA MSCI EAFE Index Pool	-	-
Lazard International Equities	91,383.54	685,876.69
	<u>91,383.54</u>	<u>685,876.69</u>
<b>Total Investment Income (Loss)</b>	<b>\$ 748,143.85</b>	<b>\$ 6,567,812.71</b>
<b>Payable To/From</b>	-	-
<b>Total Invested Assets, Beginning of Period</b>	<b>118,740,470.77</b>	<b>114,737,187.16</b>
<b>Net Contribution (Withdrawal)</b>	-	<b>(1,816,385.25)</b>
<b>Total Assets</b>	<b><u>\$ 119,488,614.62</u></b>	<b><u>\$ 119,488,614.62</u></b>

p. ② of ②



**EVOS Research Investment**  
**Schedule of Investment Income (Loss) and Changes in Invested Assets**  
**As of the Month Ending**  
**April 30, 2015**

	<u>1-Month</u>	<u>Fiscal YTD</u>
<b>Cash and Cash Equivalents</b>		
Short-term Fixed Income Pool	\$ 0.10	\$ (117.04)
ST Liquidity ( <i>Internally Managed</i> )	-	-
	<u>0.10</u>	<u>(117.04)</u>
<b>Fixed Income Securities</b>		
Interim-term ( <i>Internally Managed</i> )	-	-
Broad-term ( <i>Internally Managed</i> )	(122,588.29)	1,051,972.32
	<u>(122,588.29)</u>	<u>1,051,972.32</u>
<b>Broad Domestic Equity</b>		
SSgA Russell 3000	224,274.72	3,789,591.46
	<u>224,274.72</u>	<u>3,789,591.46</u>
<b>Global Equity Ex-U.S.</b>		
SSgA MSCI EAFE Index Pool	-	-
Lazard International Equities	1,014,258.60	496,822.63
	<u>1,014,258.60</u>	<u>496,822.63</u>
<b>Total Investment Income (Loss)</b>	<b>\$ 1,115,945.13</b>	<b>\$ 5,338,269.37</b>
<b>Payable To/From</b>	-	-
<b>Total Invested Assets, Beginning of Period</b>	<b>105,272,933.48</b>	<b>108,205,151.98</b>
<b>Net Contribution (Withdrawal)</b>	-	<b>(7,154,542.74)</b>
<b>Total Assets</b>	<b><u>\$ 106,388,878.61</u></b>	<b><u>\$ 106,388,878.61</u></b>

Total all accounts: \$225,129,349.<sup>38</sup>

Total Income(Loss): \$2,346,998.<sup>30</sup>

P. ① of ②



**Schedule of Investment Income (Loss) and Changes in Invested Assets**  
**As of the Month Ending**  
**April 30, 2015**

	<u>1-Month</u>	<u>Fiscal YTD</u>
<b>Cash and Cash Equivalents</b>		
Short-term Fixed Income Pool	\$ 0.01	\$ (28.31)
ST Liquidity ( <i>Internally Managed</i> )	-	-
	<u>0.01</u>	<u>(28.31)</u>
<b>Fixed Income Securities</b>		
Interim-term ( <i>Internally Managed</i> )	-	-
Broad-term ( <i>Internally Managed</i> )	(136,858.68)	1,148,413.83
	<u>(136,858.68)</u>	<u>1,148,413.83</u>
<b>Broad Domestic Equity</b>		
SSgA Russell 3000	252,141.75	4,076,790.19
	<u>252,141.75</u>	<u>4,076,790.19</u>
<b>Global Equity Ex-U.S.</b>		
SSgA MSCI EAFE Index Pool	-	-
Lazard International Equities	1,115,770.09	594,493.15
	<u>1,115,770.09</u>	<u>594,493.15</u>
<b>Total Investment Income (Loss)</b>	<b>\$ 1,231,053.17</b>	<b>\$ 5,819,668.86</b>
<b>Payable To/From</b>	-	-
<b>Total Invested Assets, Beginning of Period</b>	<b>117,509,417.60</b>	<b>114,737,187.16</b>
<b>Net Contribution (Withdrawal)</b>	-	<b>(1,816,385.25)</b>
<b>Total Assets</b>	<b><u>\$ 118,740,470.77</u></b>	<b><u>\$ 118,740,470.77</u></b>

p. ② of ②

**EVOS Research Investment**  
**Schedule of Investment Income (Loss) and Changes in Invested Assets**  
**As of the Month Ending**  
**March 31, 2015**

	<u>1-Month</u>	<u>Fiscal YTD</u>
<b>Cash and Cash Equivalents</b>		
Short-term Fixed Income Pool	\$ 0.06	\$ (117.14)
ST Liquidity ( <i>Internally Managed</i> )	-	-
	<u>0.06</u>	<u>(117.14)</u>
<b>Fixed Income Securities</b>		
Interim-term ( <i>Internally Managed</i> )	-	-
Broad-term ( <i>Internally Managed</i> )	152,391.78	1,174,560.61
	<u>152,391.78</u>	<u>1,174,560.61</u>
<b>Broad Domestic Equity</b>		
SSgA Russell 3000	(502,488.96)	3,565,316.74
	<u>(502,488.96)</u>	<u>3,565,316.74</u>
<b>Global Equity Ex-U.S.</b>		
SSgA MSCI EAFE Index Pool	-	-
Lazard International Equities	(217,250.67)	(517,435.97)
	<u>(217,250.67)</u>	<u>(517,435.97)</u>
<b>Total Investment Income (Loss)</b>	<b>\$ (567,347.79)</b>	<b>\$ 4,222,324.24</b>
<b>Payable To/From</b>	-	-
<b>Total Invested Assets, Beginning of Period</b>	<b>105,840,281.27</b>	<b>108,205,151.98</b>
<b>Net Contribution (Withdrawal)</b>	-	<b>(7,154,542.74)</b>
<b>Total Assets</b>	<b><u>\$ 105,272,933.48</u></b>	<b><u>\$ 105,272,933.48</u></b>

Total all accounts: \$ 222,782,351.<sup>08</sup>  
Total Income (loss): (\$ 1,201,135.<sup>52</sup>)

p. ① of ②

**EVOS Habitat Investment**  
**Schedule of Investment Income (Loss) and Changes in Invested Assets**  
**As of the Month Ending**  
**March 31, 2015**

	<u>1-Month</u>	<u>Fiscal YTD</u>
<b>Cash and Cash Equivalents</b>		
Short-term Fixed Income Pool	\$ -	\$ (28.32)
ST Liquidity ( <i>Internally Managed</i> )	-	-
	<u>-</u>	<u>(28.32)</u>
<b>Fixed Income Securities</b>		
Interim-term ( <i>Internally Managed</i> )	-	-
Broad-term ( <i>Internally Managed</i> )	170,131.58	1,285,272.51
	<u>170,131.58</u>	<u>1,285,272.51</u>
<b>Broad Domestic Equity</b>		
SSgA Russell 3000	(564,925.21)	3,824,648.44
	<u>(564,925.21)</u>	<u>3,824,648.44</u>
<b>Global Equity Ex-U.S.</b>		
SSgA MSCI EAFE Index Pool	-	-
Lazard International Equities	(238,994.10)	(521,276.94)
	<u>(238,994.10)</u>	<u>(521,276.94)</u>
<b>Total Investment Income (Loss)</b>	<b>\$ (633,787.73)</b>	<b>\$ 4,588,615.69</b>
<b>Payable To/From</b>	-	-
<b>Total Invested Assets, Beginning of Period</b>	<b>118,143,205.33</b>	<b>114,737,187.16</b>
<b>Net Contribution (Withdrawal)</b>	-	<b>(1,816,385.25)</b>
<b>Total Assets</b>	<b><u>\$ 117,509,417.60</u></b>	<b><u>\$ 117,509,417.60</u></b>

p. 2 of 2

**EVOS Research Investment**  
**Schedule of Investment Income (Loss) and Changes in Invested Assets**  
**As of the Month Ending**  
**February 27, 2015**

	<u>1-Month</u>	<u>Fiscal YTD</u>
<b>Cash and Cash Equivalents</b>		
Short-term Fixed Income Pool	\$ 0.05	\$ (117.20)
ST Liquidity ( <i>Internally Managed</i> )	-	-
	<u>0.05</u>	<u>(117.20)</u>
<b>Fixed Income Securities</b>		
Interim-term ( <i>Internally Managed</i> )	-	-
Broad-term ( <i>Internally Managed</i> )	(296,451.61)	1,022,168.83
	<u>(296,451.61)</u>	<u>1,022,168.83</u>
<b>Broad Domestic Equity</b>		
SSgA Russell 3000	2,714,008.16	4,067,805.70
	<u>2,714,008.16</u>	<u>4,067,805.70</u>
<b>Global Equity Ex-U.S.</b>		
SSgA MSCI EAFE Index Pool	-	-
Lazard International Equities	1,520,506.04	(300,185.30)
	<u>1,520,506.04</u>	<u>(300,185.30)</u>
<b>Total Investment Income (Loss)</b>	<b>\$ 3,938,062.64</b>	<b>\$ 4,789,672.03</b>
<b>Payable To/From</b>	-	-
<b>Total Invested Assets, Beginning of Period</b>	<b>101,902,218.63</b>	<b>108,205,151.98</b>
<b>Net Contribution (Withdrawal)</b>	-	(7,154,542.74)
<b>Total Assets</b>	<b><u>\$ 105,840,281.27</u></b>	<b><u>\$ 105,840,281.27</u></b>

Total all accounts: \$ 223,983,486.<sup>60</sup>  
Total Income (Loss): \$ 8,331,020.<sup>94</sup>

p. ① of ②

**EVOS Habitat Investment**  
**Schedule of Investment Income (Loss) and Changes in Invested Assets**  
**As of the Month Ending**  
**February 27, 2015**

	<u>1-Month</u>	<u>Fiscal YTD</u>
<b>Cash and Cash Equivalents</b>		
Short-term Fixed Income Pool	\$ 0.05	\$ (28.32)
ST Liquidity ( <i>Internally Managed</i> )	-	-
	<u>0.05</u>	<u>(28.32)</u>
<b>Fixed Income Securities</b>		
Interim-term ( <i>Internally Managed</i> )	-	-
Broad-term ( <i>Internally Managed</i> )	(330,961.32)	1,115,140.93
	<u>(330,961.32)</u>	<u>1,115,140.93</u>
<b>Broad Domestic Equity</b>		
SSgA Russell 3000	3,051,234.45	4,389,573.65
	<u>3,051,234.45</u>	<u>4,389,573.65</u>
<b>Global Equity Ex-U.S.</b>		
SSgA MSCI EAFE Index Pool	-	-
Lazard International Equities	1,672,685.12	(282,282.84)
	<u>1,672,685.12</u>	<u>(282,282.84)</u>
<b>Total Investment Income (Loss)</b>	<b>\$ 4,392,958.30</b>	<b>\$ 5,222,403.42</b>
<b>Payable To/From</b>	-	-
<b>Total Invested Assets, Beginning of Period</b>	<b>113,750,247.03</b>	<b>114,737,187.16</b>
<b>Net Contribution (Withdrawal)</b>	-	(1,816,385.25)
<b>Total Assets</b>	<b><u>\$ 118,143,205.33</u></b>	<b><u>\$ 118,143,205.33</u></b>

p. 2 of 2





# Asset Allocations

STATE OF ALASKA  
DEPARTMENT OF REVENUE - TREASURY DIVISION

EVOS Research Investment  
Asset Allocation Policy with Actual Investment Holdings as of  
January 29, 2016

Policy Effective October 2011

EVOS RESEARCH INVESTMENT	Asset Allocation		Fair value	Current Allocation	Variance
	Policy	Range			
<b>Cash and cash equivalents</b>					
Short-term Fixed Income Pool	0.00%		524.76	0.00%	0.00%
<b>Total cash and cash equivalents</b>	0.00%		524.76	0.00%	0.00%
<b>Marketable debt and equity securities</b>					
Domestic Fixed Income	30.00%	25% - 35%	28,187,028.56	30.13%	-0.13%
Equities Broad Market	47.00%	40% - 54%	44,012,941.73	47.05%	-0.05%
SOA International Equity Pool	23.00%	16% - 30%	21,344,734.95	22.82%	0.18%
<b>Total marketable debt securities</b>	100.00%		93,544,705.24	100.00%	0.00%
<b>Total holdings</b>	100.00%		93,545,230.00	100.00%	0.00%
Income Receivable			0.26		
<b>Total Invested Assets at Fair Value</b>			93,545,230.26		

Total all accounts: \$189,809,475.<sup>48</sup>

P. ① of ②

STATE OF ALASKA  
DEPARTMENT OF REVENUE - TREASURY DIVISION

EVOS Habitat Investment  
Asset Allocation Policy with Actual Investment Holdings as of  
January 29, 2016

Policy Effective October 2011

EVOS RESEARCH INVESTMENT	Asset Allocation		Fair value	Current Allocation	Variance
	Policy	Range			
<b>Cash and cash equivalents</b>					
Short-term Fixed Income Pool	0.00%		87.65	0.00%	0.00%
<b>Total cash and cash equivalents</b>	<u>0.00%</u>		<u>87.65</u>	<u>0.00%</u>	<u>0.00%</u>
<b>Marketable debt and equity securities</b>					
Domestic Fixed Income	30.00%	25% - 35%	29,006,262.49	30.13%	-0.13%
Equities Broad Market	47.00%	40% - 54%	45,291,429.83	47.05%	-0.05%
SOA International Equity Pool	23.00%	16% - 30%	21,964,757.10	22.82%	0.18%
<b>Total marketable debt securities</b>	<u>100.00%</u>		<u>96,262,449.42</u>	<u>100.00%</u>	<u>0.00%</u>
<b>Total holdings</b>	<u>100.00%</u>		<u>96,262,537.07</u>	<u>100.00%</u>	<u>0.00%</u>
Income Receivable			1,708.15		
<b>Total Invested Assets at Fair Value</b>			<u>96,264,245.22</u>		

STATE OF ALASKA  
DEPARTMENT OF REVENUE - TREASURY DIVISION

EVOS Research Investment  
Asset Allocation Policy with Actual Investment Holdings as of  
December 31, 2015

Policy Effective October 2011

EVOS RESEARCH INVESTMENT	Asset Allocation		Fair value	Current Allocation	Variance
	Policy	Range			
Cash and cash equivalents					
Short-term Fixed Income Pool	0.00%		179.15	0.00%	0.00%
Total cash and cash equivalents	0.00%		179.15	0.00%	0.00%
Marketable debt and equity securities					
Domestic Fixed Income	30.00%	25% - 35%	29,066,774.98	29.93%	0.07%
Equities Broad Market	47.00%	40% - 54%	45,675,919.55	47.03%	-0.03%
SOA International Equity Pool	23.00%	16% - 30%	22,370,591.49	23.04%	-0.04%
Total marketable debt securities	100.00%		97,113,286.02	100.00%	0.00%
Total holdings	100.00%		97,113,465.17	100.00%	0.00%
Income Receivable			345.61		
Total Invested Assets at Fair Value			97,113,810.78		

Total all accounts: \$212,453,194.76

p. ① of ②

STATE OF ALASKA  
DEPARTMENT OF REVENUE - TREASURY DIVISION

EVOS Research Investment  
Asset Allocation Policy with Actual Investment Holdings as of  
November 30, 2015

Policy Effective October 2011

EVOS RESEARCH INVESTMENT	Asset Allocation		Fair value	Current Allocation	Variance
	Policy	Range			
<b>Cash and cash equivalents</b>					
Short-term Fixed Income Pool	0.00%		179.09	0.00%	0.00%
<b>Total cash and cash equivalents</b>	0.00%		179.09	0.00%	0.00%
<b>Marketable debt and equity securities</b>					
Domestic Fixed Income	30.00%	25% - 35%	32,108,981.67	30.84%	-0.84%
Equities Broad Market	47.00%	40% - 54%	49,068,939.23	47.13%	-0.13%
SOA International Equity Pool	23.00%	16% - 30%	22,928,664.78	22.02%	0.98%
<b>Total marketable debt securities</b>	100.00%		104,106,585.68	100.00%	0.00%
<b>Total holdings</b>	100.00%		104,106,764.77	100.00%	0.00%
Income Receivable			0.06		
<b>Total Invested Assets at Fair Value</b>			104,106,764.83		

Total all accts: \$ 221,736,443.<sup>68</sup>

p. ① of ②



STATE OF ALASKA  
DEPARTMENT OF REVENUE - TREASURY DIVISION

EVOS Habitat Investment  
Asset Allocation Policy with Actual Investment Holdings as of  
November 30, 2015

Policy Effective October 2011

EVOS RESEARCH INVESTMENT	Asset Allocation		Fair value	Current Allocation	Variance
	Policy	Range			
Cash and cash equivalents					
Short-term Fixed Income Pool	0.00%		45.50	0.00%	0.00%
<b>Total cash and cash equivalents</b>	<b>0.00%</b>		<b>45.50</b>	<b>0.00%</b>	<b>0.00%</b>
Marketable debt and equity securities					
Domestic Fixed Income	30.00%	25% - 35%	36,275,859.94	30.84%	-0.84%
Equities Broad Market	47.00%	40% - 54%	55,438,956.91	47.13%	-0.13%
SOA International Equity Pool	23.00%	16% - 30%	25,914,816.50	22.03%	0.97%
<b>Total marketable debt securities</b>	<b>100.00%</b>		<b>117,629,633.35</b>	<b>100.00%</b>	<b>0.00%</b>
<b>Total holdings</b>	<b>100.00%</b>		<b>117,629,678.85</b>	<b>100.00%</b>	<b>0.00%</b>
Income Receivable					
<b>Total Invested Assets at Fair Value</b>			<b>117,629,678.85</b>		

p. 2 of 2

STATE OF ALASKA  
DEPARTMENT OF REVENUE - TREASURY DIVISION

EVOS Research Investment  
Asset Allocation Policy with Actual Investment Holdings as of  
October 30, 2015

Policy Effective October 2011

EVOS RESEARCH INVESTMENT	Asset Allocation		Fair value	Current Allocation	Variance
	Policy	Range			
<b>Cash and cash equivalents</b>					
Short-term Fixed Income Pool	0.00%		179.03	0.00%	0.00%
<b>Total cash and cash equivalents</b>	0.00%		179.03	0.00%	0.00%
<b>Marketable debt and equity securities</b>					
Domestic Fixed Income	30.00%	25% - 35%	32,184,668.68	30.93%	-0.93%
Equities Broad Market	47.00%	40% - 54%	48,801,018.71	46.90%	0.10%
SOA International Equity Pool	23.00%	16% - 30%	23,059,307.36	22.16%	0.84%
<b>Total marketable debt securities</b>	100.00%		104,044,994.75	100.00%	0.00%
<b>Total holdings</b>	100.00%		104,045,173.78	100.00%	0.00%
Income Receivable			0.06		
<b>Total Invested Assets at Fair Value</b>			104,045,173.84		

Total all accounts: \$221,605,317.47

p. ① of ②

STATE OF ALASKA  
DEPARTMENT OF REVENUE - TREASURY DIVISION

EVOS Habitat Investment  
Asset Allocation Policy with Actual Investment Holdings as of  
October 30, 2015

Policy Effective October 2011

EVOS RESEARCH INVESTMENT	Asset Allocation		Fair value	Current Allocation	Variance
	Policy	Range			
<b>Cash and cash equivalents</b>					
Short-term Fixed Income Pool	0.00%		45.50	0.00%	0.00%
<b>Total cash and cash equivalents</b>	<u>0.00%</u>		<u>45.50</u>	<u>0.00%</u>	<u>0.00%</u>
<b>Marketable debt and equity securities</b>					
Domestic Fixed Income	30.00%	25% - 35%	36,361,369.11	30.93%	-0.93%
Equities Broad Market	47.00%	40% - 54%	55,136,255.57	46.90%	0.10%
SOA International Equity Pool	23.00%	16% - 30%	26,062,473.45	22.17%	0.83%
<b>Total marketable debt securities</b>	<u>100.00%</u>		<u>117,560,098.13</u>	<u>100.00%</u>	<u>0.00%</u>
<b>Total holdings</b>	<u>100.00%</u>		<u>117,560,143.63</u>	<u>100.00%</u>	<u>0.00%</u>
Income Receivable					
<b>Total Invested Assets at Fair Value</b>			<u>117,560,143.63</u>		

p. 2 of 2

STATE OF ALASKA  
DEPARTMENT OF REVENUE - TREASURY DIVISION

EVOS Research Investment  
Asset Allocation Policy with Actual Investment Holdings as of  
September 30, 2015

Policy Effective October 2011

EVOS RESEARCH INVESTMENT	Asset Allocation		Fair value	Current Allocation	Variance
	Policy	Range			
Cash and cash equivalents					
Short-term Fixed Income Pool	0.00%		178.95	0.00%	0.00%
Total cash and cash equivalents	0.00%		178.95	0.00%	0.00%
Marketable debt and equity securities					
Domestic Fixed Income	30.00%	25% - 35%	32,173,072.88	32.47%	-2.47%
Equities Broad Market	47.00%	40% - 54%	45,224,984.68	45.64%	1.36%
SOA International Equity Pool	23.00%	16% - 30%	21,694,609.85	21.89%	1.11%
Total marketable debt securities	100.00%		99,092,667.41	100.00%	0.00%
Total holdings	100.00%		99,092,846.36	100.00%	0.00%
Income Receivable			0.08		
Total Invested Assets at Fair Value			99,092,846.44		

Total All Accounts: \$211,057,191.27

p. ① of ②

STATE OF ALASKA  
DEPARTMENT OF REVENUE - TREASURY DIVISION

EVOS Habitat Investment  
Asset Allocation Policy with Actual Investment Holdings as of  
September 30, 2015

Policy Effective October 2011

EVOS RESEARCH INVESTMENT	Asset Allocation		Fair value	Current Allocation	Variance
	Policy	Range			
Cash and cash equivalents					
Short-term Fixed Income Pool	0.00%		45.50	0.00%	0.00%
Total cash and cash equivalents	0.00%		45.50	0.00%	0.00%
Marketable debt and equity securities					
Domestic Fixed Income	30.00%	25% - 35%	36,348,268.55	32.46%	-2.46%
Equities Broad Market	47.00%	40% - 54%	51,095,988.99	45.64%	1.36%
SOA International Equity Pool	23.00%	16% - 30%	24,520,042.29	21.90%	1.10%
Total marketable debt securities	100.00%		111,964,299.83	100.00%	0.00%
Total holdings	100.00%		111,964,345.33	100.00%	0.00%
Income Receivable			-		
Total Invested Assets at Fair Value			111,964,345.33		

p. ② of ②



STATE OF ALASKA  
DEPARTMENT OF REVENUE - TREASURY DIVISION

EVOS Research Investment  
Asset Allocation Policy with Actual Investment Holdings as of  
August 31, 2015

Policy Effective October 2011

EVOS RESEARCH INVESTMENT	Asset Allocation		Fair value	Current Allocation	Variance
	Policy	Range			
Cash and cash equivalents					
Short-term Fixed Income Pool	0.00%		171.84	0.00%	0.00%
Total cash and cash equivalents	0.00%		171.84	0.00%	0.00%
Marketable debt and equity securities					
Domestic Fixed Income	30.00%	25% - 35%	31,942,798.08	31.56%	-1.56%
Equities Broad Market	47.00%	40% - 54%	46,578,688.37	46.02%	0.98%
SOA International Equity Pool	23.00%	16% - 30%	22,686,059.75	22.42%	0.58%
Total marketable debt securities	100.00%		101,207,546.20	100.00%	0.00%
Total holdings	100.00%		101,207,718.04	100.00%	0.00%
Income Receivable			7.11		
Total Invested Assets at Fair Value			101,207,725.15		

Total all accounts: \$215,561,923.<sup>66</sup>

p. ① of ②

STATE OF ALASKA  
DEPARTMENT OF REVENUE - TREASURY DIVISION

EVOS Habitat Investment  
Asset Allocation Policy with Actual Investment Holdings as of  
August 31, 2015

Policy Effective October 2011

EVOS RESEARCH INVESTMENT	Asset Allocation		Fair value	Current Allocation	Variance
	Policy	Range			
<b>Cash and cash equivalents</b>					
Short-term Fixed Income Pool	0.00%		37.58	0.00%	0.00%
<b>Total cash and cash equivalents</b>	<u>0.00%</u>		<u>37.58</u>	<u>0.00%</u>	<u>0.00%</u>
<b>Marketable debt and equity securities</b>					
Domestic Fixed Income	30.00%	25% - 35%	36,088,110.31	31.56%	-1.56%
Equities Broad Market	47.00%	40% - 54%	52,625,427.43	46.02%	0.98%
SOA International Equity Pool	23.00%	16% - 30%	25,640,615.27	22.42%	0.58%
<b>Total marketable debt securities</b>	<u>100.00%</u>		<u>114,354,153.01</u>	<u>100.00%</u>	<u>0.00%</u>
<b>Total holdings</b>	<u>100.00%</u>		<u>114,354,190.59</u>	<u>100.00%</u>	<u>0.00%</u>
Income Receivable			7.92		
<b>Total Invested Assets at Fair Value</b>			<u>114,354,198.51</u>		

P. 6 of 2

STATE OF ALASKA  
DEPARTMENT OF REVENUE - TREASURY DIVISION

EVOS Research Investment  
Asset Allocation Policy with Actual Investment Holdings as of  
July 31, 2015

Policy Effective October 2011

EVOS RESEARCH INVESTMENT	Asset Allocation		Fair value	Current Allocation	Variance
	Policy	Range			
<b>Cash and cash equivalents</b>					
Short-term Fixed Income Pool	0.00%		218.24	0.00%	0.00%
<b>Total cash and cash equivalents</b>	<u>0.00%</u>		<u>218.24</u>	<u>0.00%</u>	<u>0.00%</u>
<b>Marketable debt and equity securities</b>					
Domestic Fixed Income	30.00%	25% - 35%	32,027,385.60	30.26%	-0.26%
Equities Broad Market	47.00%	40% - 54%	49,568,117.44	46.83%	0.17%
SOA International Equity Pool	23.00%	16% - 30%	24,252,155.47	22.91%	0.09%
<b>Total marketable debt securities</b>	<u>100.00%</u>		<u>105,847,658.51</u>	<u>100.00%</u>	<u>0.00%</u>
<b>Total holdings</b>	<u>100.00%</u>		<u>105,847,876.75</u>	<u>100.00%</u>	<u>0.00%</u>
Income Receivable			(46.40)		
<b>Total Invested Assets at Fair Value:</b>			<u><u>105,847,830.35</u></u>		

Total all accounts: \$ 225,444,550.99

p. ① of ②

STATE OF ALASKA  
DEPARTMENT OF REVENUE - TREASURY DIVISION

EVOS Habitat Investment  
Asset Allocation Policy with Actual Investment Holdings as of  
July 31, 2015

Policy Effective October 2011

EVOS RESEARCH INVESTMENT	Asset Allocation		Fair value	Current Allocation	Variance
	Policy	Range			
Cash and cash equivalents					
Short-term Fixed Income Pool	0.00%		88.66	0.00%	0.00%
Total cash and cash equivalents	0.00%		88.66	0.00%	0.00%
Marketable debt and equity securities					
Domestic Fixed Income	30.00%	25% - 35%	36,183,071.83	30.25%	-0.25%
Equities Broad Market	47.00%	40% - 54%	56,002,937.28	46.83%	0.17%
SOA International Equity Pool	23.00%	16% - 30%	27,410,673.95	22.92%	0.08%
Total marketable debt securities	100.00%		119,596,683.06	100.00%	0.00%
Total holdings	100.00%		119,596,771.72	100.00%	0.00%
Income Receivable			(51.08)		
Total Invested Assets at Fair Value			119,596,720.64		

p. 2 of 2

STATE OF ALASKA  
DEPARTMENT OF REVENUE - TREASURY DIVISION

EVOS Research Investment  
Asset Allocation Policy with Actual Investment Holdings as of  
June 30, 2015

Policy Effective October 2011

EVOS RESEARCH INVESTMENT	Asset Allocation		Fair value	Current Allocation	Variance
	Policy	Range			
<b>Cash and cash equivalents</b>					
Short-term Fixed Income Pool	0.00%		218.20	0.00%	0.00%
<b>Total cash and cash equivalents</b>	<u>0.00%</u>		<u>218.20</u>	<u>0.00%</u>	<u>0.00%</u>
<b>Marketable debt and equity securities</b>					
Domestic Fixed Income	30.00%	25% - 35%	31,079,597.04	29.47%	0.53%
Equities Broad Market	47.00%	40% - 54%	49,050,508.83	46.51%	0.49%
SOA International Equity Pool	23.00%	16% - 30%	25,342,124.75	24.03%	-1.03%
<b>Total marketable debt securities</b>	<u>100.00%</u>		<u>105,472,230.62</u>	<u>100.00%</u>	<u>0.00%</u>
<b>Total holdings</b>	<u>100.00%</u>		<u>105,472,448.82</u>	<u>100.00%</u>	<u>0.00%</u>
Income Receivable			0.04		
<b>Total Invested Assets at Fair Value</b>			<u>105,472,448.86</u>		

Total all accounts: \$223,193,795.<sup>15</sup>

P. ① of ②



STATE OF ALASKA  
DEPARTMENT OF REVENUE - TREASURY DIVISION

EVOS Habitat Investment  
Asset Allocation Policy with Actual Investment Holdings as of  
June 30, 2015

Policy Effective October 2011

EVOS RESEARCH INVESTMENT	Asset Allocation		Fair value	Current Allocation	Variance
	Policy	Range			
Cash and cash equivalents					
Short-term Fixed Income Pool	0.00%		88.63	0.00%	0.00%
<b>Total cash and cash equivalents</b>	<b>0.00%</b>		<b>88.63</b>	<b>0.00%</b>	<b>0.00%</b>
Marketable debt and equity securities					
Domestic Fixed Income	30.00%	25% - 35%	34,697,550.70	29.47%	0.53%
Equities Broad Market	47.00%	40% - 54%	55,145,229.27	46.84%	0.16%
SOA International Equity Pool	23.00%	16% - 30%	27,878,478.26	23.68%	-0.68%
<b>Total marketable debt securities</b>	<b>100.00%</b>		<b>117,721,258.23</b>	<b>100.00%</b>	<b>0.00%</b>
<b>Total holdings</b>	<b>100.00%</b>		<b>117,721,346.86</b>	<b>100.00%</b>	<b>0.00%</b>
Income Receivable			0.03		
<b>Total Invested Assets at Fair Value</b>			<b>117,721,346.89</b>		

p. (2) of (2)

STATE OF ALASKA  
DEPARTMENT OF REVENUE - TREASURY DIVISION

EVOS Research Investment  
Asset Allocation Policy with Actual Investment Holdings as of  
May 29, 2015

Policy Effective October 2011

EVOS RESEARCH INVESTMENT	Asset Allocation		Fair value	Current Allocation	Variance
	Policy	Range			
Cash and cash equivalents					
Short-term Fixed Income Pool	0.00%		218.12	0.00%	0.00%
<b>Total cash and cash equivalents</b>	<b>0.00%</b>		<b>218.12</b>	<b>0.00%</b>	<b>0.00%</b>
Marketable debt and equity securities					
Domestic Fixed Income	30.00%	25% - 35%	31,402,910.61	29.33%	0.67%
Equities Broad Market	47.00%	40% - 54%	49,896,869.45	46.61%	0.39%
SOA International Equity Pool	23.00%	16% - 30%	25,755,541.28	24.06%	-1.06%
<b>Total marketable debt securities</b>	<b>100.00%</b>		<b>107,055,321.34</b>	<b>100.00%</b>	<b>0.00%</b>
<b>Total holdings</b>	<b>100.00%</b>		<b>107,055,539.46</b>	<b>100.00%</b>	<b>0.00%</b>
Income Receivable			0.08		
<b>Total Invested Assets at Fair Value</b>			<b>107,055,539.54</b>		

Total All Accounts: \$ 224,544,154.<sup>16</sup>

P. ① of ②

STATE OF ALASKA  
DEPARTMENT OF REVENUE - TREASURY DIVISION

EVOS Habitat Investment  
Asset Allocation Policy with Actual Investment Holdings as of  
May 29, 2015

Policy Effective October 2011

EVOS RESEARCH INVESTMENT	Asset Allocation		Fair value	Current Allocation	Variance
	Policy	Range			
Cash and cash equivalents					
Short-term Fixed Income Pool	0.00%		88.61	0.00%	0.00%
<b>Total cash and cash equivalents</b>	<b>0.00%</b>		<b>88.61</b>	<b>0.00%</b>	<b>0.00%</b>
Marketable debt and equity securities					
Domestic Fixed Income	30.00%	25% - 35%	35,058,501.03	29.34%	0.66%
Equities Broad Market	47.00%	40% - 54%	56,096,753.57	46.95%	0.05%
SOA International Equity Pool	23.00%	16% - 30%	28,333,271.39	23.71%	-0.71%
<b>Total marketable debt securities</b>	<b>100.00%</b>		<b>119,488,525.99</b>	<b>100.00%</b>	<b>0.00%</b>
<b>Total holdings</b>	<b>100.00%</b>		<b>119,488,614.60</b>	<b>100.00%</b>	<b>0.00%</b>
Income Receivable			0.02		
<b>Total Invested Assets at Fair Value</b>			<b>119,488,614.62</b>		

p. 2 of 2

STATE OF ALASKA  
DEPARTMENT OF REVENUE - TREASURY DIVISION

EVOS Research Investment  
Asset Allocation Policy with Actual Investment Holdings as of  
April 30, 2015

Policy Effective October 2011

EVOS RESEARCH INVESTMENT	Asset Allocation		Fair value	Current Allocation	Variance
	Policy	Range			
<b>Cash and cash equivalents</b>					
Short-term Fixed Income Pool	0.00%		218.02	0.00%	0.00%
<b>Total cash and cash equivalents</b>	<u>0.00%</u>		<u>218.02</u>	<u>0.00%</u>	<u>0.00%</u>
<b>Marketable debt and equity securities</b>					
Domestic Fixed Income	30.00%	25% - 35%	31,486,465.68	29.60%	0.40%
Equities Broad Market	47.00%	40% - 54%	49,229,723.10	46.27%	0.73%
SOA International Equity Pool	23.00%	16% - 30%	25,672,471.71	24.13%	-1.13%
<b>Total marketable debt securities</b>	<u>100.00%</u>		<u>106,388,660.49</u>	<u>100.00%</u>	<u>0.00%</u>
<b>Total holdings</b>	<u>100.00%</u>		<u>106,388,878.51</u>	<u>100.00%</u>	<u>0.00%</u>
Income Receivable			0.10		
<b>Total Invested Assets at Fair Value</b>			<u><u>106,388,878.61</u></u>		

Total all accounts: \$225,129,349.<sup>38</sup>

p. ① of ②

STATE OF ALASKA  
DEPARTMENT OF REVENUE - TREASURY DIVISION

EVOS Habitat Investment  
Asset Allocation Policy with Actual Investment Holdings as of  
April 30, 2015

Policy Effective October 2011

EVOS RESEARCH INVESTMENT	Asset Allocation		Fair value	Current Allocation	Variance
	Policy	Range			
<b>Cash and cash equivalents</b>					
Short-term Fixed Income Pool	0.00%		88.60	0.00%	0.00%
<b>Total cash and cash equivalents</b>	<u>0.00%</u>		<u>88.60</u>	<u>0.00%</u>	<u>0.00%</u>
<b>Marketable debt and equity securities</b>					
Domestic Fixed Income	30.00%	25% - 35%	35,151,782.64	29.60%	0.40%
Equities Broad Market	47.00%	40% - 54%	55,346,711.67	46.61%	0.39%
SOA International Equity Pool	23.00%	16% - 30%	28,241,887.85	23.78%	-0.78%
<b>Total marketable debt securities</b>	<u>100.00%</u>		<u>118,740,382.16</u>	<u>100.00%</u>	<u>0.00%</u>
<b>Total holdings</b>	<u>100.00%</u>		<u>118,740,470.76</u>	<u>100.00%</u>	<u>0.00%</u>
Income Receivable			0.01		
<b>Total Invested Assets at Fair Value</b>			<u>118,740,470.77</u>		

p. (2) of (2)

STATE OF ALASKA  
DEPARTMENT OF REVENUE - TREASURY DIVISION

EVOS Research Investment  
Asset Allocation Policy with Actual Investment Holdings as of  
March 31, 2015

Policy Effective October 2011

EVOS RESEARCH INVESTMENT	Asset Allocation		Fair value	Current Allocation	Variance
	Policy	Range			
<b>Cash and cash equivalents</b>					
Short-term Fixed Income Pool	0.00%		217.96	0.00%	0.00%
<b>Total cash and cash equivalents</b>	<u>0.00%</u>		<u>217.96</u>	<u>0.00%</u>	<u>0.00%</u>
<b>Marketable debt and equity securities</b>					
Domestic Fixed Income	30.00%	25% - 35%	31,609,053.97	30.03%	-0.03%
Equities Broad Market	47.00%	40% - 54%	49,005,448.38	46.55%	0.45%
SOA International Equity Pool	23.00%	16% - 30%	24,658,213.11	23.42%	-0.42%
<b>Total marketable debt securities</b>	<u>100.00%</u>		<u>105,272,715.46</u>	<u>100.00%</u>	<u>0.00%</u>
<b>Total holdings</b>	<u>100.00%</u>		<u>105,272,933.42</u>	<u>100.00%</u>	<u>0.00%</u>
Income Receivable			0.06		
<b>Total Invested Assets at Fair Value</b>			<u>105,272,933.48</u>		

Total all accounts: \$222,782,351.<sup>08</sup>

p. ① of ②



STATE OF ALASKA  
DEPARTMENT OF REVENUE - TREASURY DIVISION

EVOS Habitat Investment  
Asset Allocation Policy with Actual Investment Holdings as of  
March 31, 2015

Policy Effective October 2011

EVOS RESEARCH INVESTMENT	Asset Allocation		Fair value	Current Allocation	Variance
	Policy	Range			
<b>Cash and cash equivalents</b>					
Short-term Fixed Income Pool	0.00%		88.60	0.00%	0.00%
<b>Total cash and cash equivalents</b>	<u>0.00%</u>		<u>88.60</u>	<u>0.00%</u>	<u>0.00%</u>
<b>Marketable debt and equity securities</b>					
Domestic Fixed Income	30.00%	25% - 35%	35,288,641.32	30.03%	-0.03%
Equities Broad Market	47.00%	40% - 54%	55,094,569.92	46.89%	0.11%
SOA International Equity Pool	23.00%	16% - 30%	27,126,117.76	23.08%	-0.08%
<b>Total marketable debt securities</b>	<u>100.00%</u>		<u>117,509,329.00</u>	<u>100.00%</u>	<u>0.00%</u>
<b>Total holdings</b>	<u>100.00%</u>		<u>117,509,417.60</u>	<u>100.00%</u>	<u>0.00%</u>
Income Receivable					
<b>Total Invested Assets at Fair Value</b>			<u>117,509,417.60</u>		

p. (2) of (2)

STATE OF ALASKA  
DEPARTMENT OF REVENUE - TREASURY DIVISION

EVOS Research Investment  
Asset Allocation Policy with Actual Investment Holdings as of  
February 27, 2015

Policy Effective October 2011

EVOS RESEARCH INVESTMENT	Asset Allocation		Fair value	Current Allocation	Variance
	Policy	Range			
<b>Cash and cash equivalents</b>					
Short-term Fixed Income Pool	0.00%		217.91	0.00%	0.00%
<b>Total cash and cash equivalents</b>	<u>0.00%</u>		<u>217.91</u>	<u>0.00%</u>	<u>0.00%</u>
<b>Marketable debt and equity securities</b>					
Domestic Fixed Income	30.00%	25% - 35%	31,456,662.19	29.72%	0.28%
Equities Broad Market	47.00%	40% - 54%	49,507,937.34	46.78%	0.22%
SOA International Equity Pool	23.00%	16% - 30%	24,875,463.78	23.50%	-0.50%
<b>Total marketable debt securities</b>	<u>100.00%</u>		<u>105,840,063.31</u>	<u>100.00%</u>	<u>0.00%</u>
<b>Total holdings</b>	<u>100.00%</u>		<u>105,840,281.22</u>	<u>100.00%</u>	<u>0.00%</u>
Income Receivable			0.05		
<b>Total Invested Assets at Fair Value</b>			<u>105,840,281.27</u>		

Total all accounts: \$223,983,486.<sup>60</sup>

p. ① of ②

STATE OF ALASKA  
DEPARTMENT OF REVENUE - TREASURY DIVISION

EVOS Habitat Investment  
Asset Allocation Policy with Actual Investment Holdings as of  
February 27, 2015

Policy Effective October 2011

EVOS RESEARCH INVESTMENT	Asset Allocation		Fair value	Current Allocation	Variance
	Policy	Range			
Cash and cash equivalents					
Short-term Fixed Income Pool	0.00%		88.55	0.00%	0.00%
<b>Total cash and cash equivalents</b>	<b>0.00%</b>		<b>88.55</b>	<b>0.00%</b>	<b>0.00%</b>
Marketable debt and equity securities					
Domestic Fixed Income	30.00%	25% - 35%	35,118,509.74	29.73%	0.27%
Equities Broad Market	47.00%	40% - 54%	55,659,495.13	47.11%	-0.11%
SOA International Equity Pool	23.00%	16% - 30%	27,365,111.86	23.16%	-0.16%
<b>Total marketable debt securities</b>	<b>100.00%</b>		<b>118,143,116.73</b>	<b>100.00%</b>	<b>0.00%</b>
<b>Total holdings</b>	<b>100.00%</b>		<b>118,143,205.28</b>	<b>100.00%</b>	<b>0.00%</b>
Income Receivable			0.05		
<b>Total Invested Assets at Fair Value</b>			<b>118,143,205.33</b>		

p. 2 of 2



Performance  
Measurement  
Reports  
(Rates of Return)

STATE OF ALASKA  
EVOS INVESTMENT FUND  
RATES OF RETURN  
JAN-2016



STATE STREET.

	Ending Market Value	1 Month	3 Month	1 Year	3 Year	5 Year	ITD	Inception Date
EVOS RESEARCH INVESTMENT	93,545,230	-3.67	-4.92	-1.68	6.68	7.52	5.57	1-Nov-2000
EVOS INVESTMENT FUND BENCHMARK (Index)		-3.90	-5.39	-2.94	5.86	6.49	5.03	
EVOS HABITAT INVESTMENT	96,264,245	-3.45	-4.72	-1.48	6.75	7.55	7.36	1-Nov-2002
EVOS INVESTMENT FUND BENCHMARK		-3.90	-5.39	-2.94	5.86	6.49	7.10	
EVOS RUSSELL 3000 INDEX FUND	89,304,372	-5.64	-7.07	-2.33	10.53	10.37	4.67	1-Nov-2000
RUSSELL 3000 INDEX		-5.64	-7.07	-2.48	10.55	10.40	4.35	
EVOS SOA INT'L EQUITY POOL	43,309,492	-6.30	-8.24	-3.17	4.00	5.74	4.80	1-Nov-2000
MSCI EAFE (NET) INDEX		-7.23	-9.91	-8.43	0.68	1.59	2.95	
EVOS BROAD MARKET FIXED INCOME	57,193,291	1.47	0.92	0.07	2.21	3.61	5.33	1-Nov-2000
BARCLAYS AGGREGATE BOND INDEX (xSL - ec)		1.38	0.78	-0.16	2.15	3.51	5.21	

Total all accounts: \$129,809,475

STATE OF ALASKA  
EVOS INVESTMENT FUND  
RATES OF RETURN  
DEC-2015



STATE STREET.

	Ending Market Value	1 Month	3 Month	1 Year	3 Year	5 Year	ITD	Inception Date
EVOS RESEARCH INVESTMENT	97,113,811	-1.35	3.65	1.37	9.22	8.61	5.87	1-Nov-2000
EVOS INVESTMENT FUND BENCHMARK		-1.37	3.88	0.43	8.54	7.69	5.33	
EVOS HABITAT INVESTMENT	115,339,384	-1.37	3.62	1.33	9.21	8.59	7.70	1-Nov-2002
EVOS INVESTMENT FUND BENCHMARK		-1.37	3.88	0.43	8.54	7.69	7.47	
EVOS RUSSELL 3000 INDEX FUND	99,909,338	-2.04	6.28	0.64	14.72	12.14	5.10	1-Nov-2000
RUSSELL 3000 INDEX		-2.05	6.27	0.48	14.74	12.18	4.78	
EVOS SOA INT'L EQUITY POOL	48,952,510	-1.51	4.09	3.18	7.84	7.30	5.28	1-Nov-2000
MSCI EAFE (NET) INDEX		-1.35	4.71	-0.81	5.01	3.60	3.47	
EVOS BROAD MARKET FIXED INCOME	63,590,735	-0.31	-0.50	0.76	1.46	3.35	5.26	1-Nov-2000
BARCLAYS AGGREGATE BOND INDEX		-0.32	-0.57	0.55	1.44	3.25	5.15	

Total all accounts: \$ 212,453,195



STATE OF ALASKA  
EVOS INVESTMENT FUND  
RATES OF RETURN  
NOV-2015



STATE STREET

	Ending Market Value	1 Month	3 Month	1 Year	3 Year	5 Year	ITD	Inception Date
EVOS RESEARCH INVESTMENT	104,106,765	0.06	2.86	2.13	10.18	9.90	6.00	1-Nov-2000
EVOS INVESTMENT FUND BENCHMARK		-0.18	2.87	1.05	9.50	8.98	5.46	
EVOS HABITAT INVESTMENT	117,629,679	0.06	2.86	2.09	10.17	9.89	7.87	1-Nov-2002
EVOS INVESTMENT FUND BENCHMARK		-0.18	2.87	1.05	9.50	8.98	7.64	
EVOS RUSSELL 3000 INDEX FUND	104,507,896	0.55	5.35	2.70	15.98	14.08	5.27	1-Nov-2000
RUSSELL 3000 INDEX		0.55	5.34	2.58	16.00	14.13	4.95	
EVOS SOA INT'L EQUITY POOL	48,843,481	-0.57	1.07	1.78	9.57	9.31	5.42	1-Nov-2000
MSCI EAFE (NET) INDEX		-1.56	0.75	-2.94	6.60	5.52	3.59	
EVOS BROAD MARKET FIXED INCOME	68,384,842	-0.24	0.52	1.15	1.51	3.18	5.31	1-Nov-2000
BARCLAYS AGGREGATE BOND INDEX		-0.26	0.43	0.97	1.50	3.09	5.20	

Total all accts: \$221,736,444

STATE OF ALASKA  
EVOS INVESTMENT FUND  
RATES OF RETURN  
OCT-2015



STATE STREET.

	Ending Market Value	1 Month	3 Month	1 Year	3 Year	5 Year	ITD	Inception Date
EVOS RESEARCH INVESTMENT	104,045,174	5.00	-1.66	3.92	10.48	9.65	6.03	1-Nov-2000
EVOS INVESTMENT FUND BENCHMARK		5.52	-1.66	2.91	9.91	8.80	5.50	
EVOS HABITAT INVESTMENT	117,560,144	5.00	-1.66	3.89	10.47	9.63	7.91	1-Nov-2002
EVOS INVESTMENT FUND BENCHMARK		5.52	-1.66	2.91	9.91	8.80	7.70	
EVOS RUSSELL 3000 INDEX FUND	103,937,274	7.91	-1.55	4.64	16.07	14.09	5.27	1-Nov-2000
RUSSELL 3000 INDEX		7.90	-1.57	4.49	16.09	14.14	4.94	
EVOS SOA INT'L EQUITY POOL	49,121,781	6.29	-4.92	4.30	10.50	8.25	5.49	1-Nov-2000
MSCI EAFE (NET) INDEX		7.82	-5.19	-0.07	8.02	4.81	3.72	
EVOS BROAD MARKET FIXED INCOME	68,546,038	0.04	0.63	2.18	1.63	3.13	5.36	1-Nov-2000
BARCLAYS AGGREGATE BOND INDEX		0.02	0.55	1.96	1.65	3.03	5.25	

Total: \$221,605,318

STATE OF ALASKA  
EVOS INVESTMENT FUND  
RATES OF RETURN  
SEP-2015



STATE STREET.

	Ending Market Value	1 Month	3 Month	1 Year	3 Year	5 Year	ITD	Inception Date
EVOS RESEARCH INVESTMENT	99,092,846	-2.09	-4.85	0.32	8.43	9.17	5.71	1-Nov-2000
EVOS INVESTMENT FUND BENCHMARK		-2.33	-5.43	-1.25	7.76	8.23	5.16	
EVOS HABITAT INVESTMENT	111,964,345	-2.09	-4.85	0.28	8.43	9.15	7.56	1-Nov-2002
EVOS INVESTMENT FUND BENCHMARK		-2.33	-5.43	-1.25	7.76	8.23	7.31	
EVOS RUSSELL 3000 INDEX FUND	96,320,974	-2.91	-7.08	-0.38	12.52	13.23	4.76	1-Nov-2000
RUSSELL 3000 INDEX		-2.91	-7.25	-0.49	12.53	13.28	4.44	
EVOS SOA INT'L EQUITY POOL	46,214,652	-4.37	-8.51	-2.85	8.29	7.58	5.09	1-Nov-2000
MSCI EAFE (NET) INDEX		-5.08	-10.23	-8.66	5.63	3.98	3.21	
EVOS BROAD MARKET FIXED INCOME	68,521,341	0.72	1.27	3.15	1.71	3.22	5.38	1-Nov-2000
BARCLAYS AGGREGATE BOND INDEX		0.68	1.23	2.94	1.71	3.10	5.28	

Total: \$211,057,191

STATE OF ALASKA  
EVOS INVESTMENT FUND  
RATES OF RETURN  
AUG-2015



STATE STREET.

	Ending Market Value	1 Month	3 Month	1 Year	3 Year	5 Year	ITD	Inception Date
EVOS RESEARCH INVESTMENT	101,207,725	-4.34	-4.26	0.63	10.00	11.01	5.90	1-Nov-2000
EVOS INVESTMENT FUND BENCHMARK		-4.57	-4.88	-0.98	9.32	10.17	5.35	
EVOS HABITAT INVESTMENT	114,354,199	-4.34	-4.26	0.59	9.97	11.00	7.79	1-Nov-2002
EVOS INVESTMENT FUND BENCHMARK		-4.57	-4.88	-0.98	9.32	10.17	7.55	
EVOS RUSSELL 3000 INDEX FUND	99,204,116	-6.03	-5.92	0.47	14.61	15.96	5.00	1-Nov-2000
RUSSELL 3000 INDEX		-6.04	-6.06	0.36	14.63	16.03	4.67	
EVOS SOA INT'L EQUITY POOL	48,326,675	-6.46	-5.86	-1.07	11.24	10.39	5.44	1-Nov-2000
MSCI EAFE (NET) INDEX		-7.36	-8.11	-7.47	8.53	7.05	3.60	
EVOS BROAD MARKET FIXED INCOME	68,030,908	-0.13	-0.49	1.70	1.52	3.11	5.36	1-Nov-2000
BARCLAYS AGGREGATE BOND INDEX		-0.14	-0.55	1.56	1.53	2.98	5.26	

Total all accounts: \$215,561,924

STATE OF ALASKA  
EVOS INVESTMENT FUND  
RATES OF RETURN  
JUL-2015



STATE STREET.

	Ending Market Value	1 Month	3 Month	1 Year	3 Year	5 Year	ITD	Inception Date
* EVOS RESEARCH INVESTMENT	105,847,830	1.59	0.72	7.72	12.25	11.50	6.25	1-Nov-2000
EVOS INVESTMENT FUND BENCHMARK		1.47	0.14	6.12	11.70	10.63	5.72	
* EVOS HABITAT INVESTMENT	119,596,721	1.59	0.72	7.69	12.22	11.48	8.22	1-Nov-2002
EVOS INVESTMENT FUND BENCHMARK		1.47	0.14	6.12	11.70	10.63	8.00	
EVOS RUSSELL 3000 INDEX FUND	105,571,055	1.84	1.47	11.42	17.97	16.29	5.47	1-Nov-2000
RUSSELL 3000 INDEX		1.67	1.35	11.28	18.00	16.35	5.14	
EVOS SOA INT'L EQUITY POOL	51,662,829	2.28	0.96	6.06	14.49	11.47	5.95	1-Nov-2000
MSCI EAFE (NET) INDEX		2.08	-1.32	-0.28	12.32	8.01	4.16	
EVOS BROAD MARKET FIXED INCOME	68,210,457	0.68	-0.63	3.02	1.61	3.39	5.40	1-Nov-2000
BARCLAYS AGGREGATE BOND INDEX		0.70	-0.64	2.82	1.60	3.27	5.30	

Total All accounts: \$ 225,444,551



STATE OF ALASKA  
EVOS INVESTMENT FUND  
RATES OF RETURN  
JUN-2015



STATE STREET.

	Ending Market Value	1 Month	3 Month	1 Year	3 Year	5 Year	ITD	Inception Date
EVOS RESEARCH INVESTMENT	105,472,449	-1.48	0.19	4.26	12.21	12.38	6.18	1-Nov-2000
EVOS INVESTMENT FUND BENCHMARK		-1.77	-0.28	3.06	11.58	11.55	5.65	
EVOS HABITAT INVESTMENT	117,721,347	-1.48	0.18	4.23	12.17	12.37	8.14	1-Nov-2002
EVOS INVESTMENT FUND BENCHMARK		-1.77	-0.28	3.06	11.58	11.55	7.93	
EVOS KONIAG INVESTMENT	-	0.00	0.00	0.00	8.90	10.41	7.35	1-Nov-2002
EVOS INVESTMENT FUND BENCHMARK		-1.77	-0.28	3.06	11.58	11.55	7.93	
EVOS RUSSELL 3000 INDEX FUND	104,195,738	-1.70	0.09	7.30	17.63	17.44	5.37	1-Nov-2000
RUSSELL 3000 INDEX		-1.67	0.14	7.29	17.73	17.54	5.05	
EVOS SOA INT'L EQUITY POOL	53,220,603	-1.61	2.77	0.71	14.60	12.93	5.82	1-Nov-2000
MSCI EAFE (NET) INDEX		-2.83	0.62	-4.22	11.97	9.54	4.03	
EVOS BROAD MARKET FIXED INCOME	65,777,148	-1.03	-1.68	2.05	1.86	3.49	5.39	1-Nov-2000
BARCLAYS AGGREGATE BOND INDEX		-1.09	-1.68	1.86	1.83	3.35	5.28	

Total: 223,193,796



STATE OF ALASKA  
EVOS INVESTMENT FUND  
RATES OF RETURN  
MAY-2015



STATE STREET.

	Ending Market Value	1 Month	3 Month	1 Year	3 Year	5 Year	ITD	Inception Date
• EVOS RESEARCH INVESTMENT	107,055,540	0.63	1.15	7.46	14.07	12.19	6.32	1-Nov-2000
EVOS INVESTMENT FUND BENCHMARK		0.46	0.81	6.40	13.53	11.40	5.81	
• EVOS HABITAT INVESTMENT	119,488,615	0.63	1.14	7.43	14.02	12.17	8.32	1-Nov-2002
EVOS INVESTMENT FUND BENCHMARK		0.46	0.81	6.40	13.53	11.40	8.14	
EVOS KONIAG INVESTMENT	-	0.00	0.00	0.00	10.15	9.89	7.40	1-Nov-2002
EVOS INVESTMENT FUND BENCHMARK		0.46	0.81	6.40	13.53	11.40	8.14	
EVOS RUSSELL 3000 INDEX FUND	105,993,623	1.36	0.79	11.80	19.82	16.45	5.53	1-Nov-2000
RUSSELL 3000 INDEX		1.38	0.81	11.86	19.92	16.54	5.20	
EVOS SOA INT'L EQUITY POOL	54,088,813	0.32	3.54	4.03	18.01	13.22	5.97	1-Nov-2000
MSCI EAFE (NET) INDEX		-0.51	1.98	-0.48	15.63	9.95	4.26	
EVOS BROAD MARKET FIXED INCOME	66,461,412	-0.27	-0.17	3.14	2.25	4.03	5.49	1-Nov-2000
BARCLAYS AGGREGATE BOND INDEX		-0.24	-0.14	3.03	2.21	3.90	5.39	

Total: \$226,544,155

STATE OF ALASKA  
EVOS INVESTMENT FUND  
RATES OF RETURN  
APR-2015



STATE STREET.

	Ending Market Value	1 Month	3 Month	1 Year	3 Year	5 Year	ITD	Inception Date
★ EVOS RESEARCH INVESTMENT	106,388,879	1.06	4.40	9.04	11.82	10.78	6.31	1-Nov-2000
★ EVOS INVESTMENT FUND BENCHMARK		1.04	4.18	7.76	11.32	9.99	5.81	
EVOS HABITAT INVESTMENT	118,740,471	1.05	4.39	9.00	11.78	10.76	8.33	1-Nov-2002
EVOS INVESTMENT FUND BENCHMARK		1.04	4.18	7.76	11.32	9.99	8.16	
EVOS KONIAG INVESTMENT	-	0.00	0.00	0.00	8.21	8.65	7.45	1-Nov-2002
EVOS INVESTMENT FUND BENCHMARK		1.04	4.18	7.76	11.32	9.99	8.16	
EVOS RUSSELL 3000 INDEX FUND	104,576,435	0.46	5.21	12.72	16.77	14.24	5.46	1-Nov-2000
RUSSELL 3000 INDEX		0.45	5.19	12.74	16.86	14.33	5.13	
EVOS SOA INT'L EQUITY POOL	53,914,360	4.11	9.92	6.89	13.43	10.68	5.98	1-Nov-2000
MSCI EAFE (NET) INDEX		4.08	8.63	1.66	11.22	7.40	4.32	
EVOS BROAD MARKET FIXED INCOME	66,638,248	-0.39	-0.84	4.66	2.65	4.28	5.55	1-Nov-2000
BARCLAYS AGGREGATE BOND INDEX		-0.36	-0.84	4.46	2.60	4.12	5.44	

★ Total all accounts: \$225,129,350

STATE OF ALASKA  
EVOS INVESTMENT FUND  
RATES OF RETURN  
MAR-2015



STATE STREET.

	Ending Market Value	1 Month	3 Month	1 Year	3 Year	5 Year	ITD	Inception Date
EVOS RESEARCH INVESTMENT	105,272,933	-0.54	2.60	8.26	11.35	10.79	6.27	1-Nov-2000
EVOS INVESTMENT FUND BENCHMARK		-0.69	2.52	7.33	10.78	9.98	5.77	
EVOS HABITAT INVESTMENT	117,509,418	-0.54	2.59	8.23	11.32	10.77	8.29	1-Nov-2002
EVOS INVESTMENT FUND BENCHMARK		-0.69	2.52	7.33	10.78	9.98	8.12	
EVOS KONIAG INVESTMENT	-	0.00	0.00	0.00	8.14	8.88	7.50	1-Nov-2002
EVOS INVESTMENT FUND BENCHMARK		-0.69	2.52	7.33	10.78	9.98	8.12	
EVOS RUSSELL 3000 INDEX FUND	104,100,018	-1.01	1.81	12.38	16.34	14.63	5.46	1-Nov-2000
RUSSELL 3000 INDEX		-1.02	1.80	12.37	16.43	14.71	5.13	
EVOS SOA INT'L EQUITY POOL	51,784,331	-0.87	5.41	2.71	11.57	9.44	5.72	1-Nov-2000
MSCI EAFE (NET) INDEX		-1.52	4.88	-0.92	9.02	6.16	4.06	
EVOS BROAD MARKET FIXED INCOME	66,897,695	0.48	1.70	5.97	3.16	4.58	5.61	1-Nov-2000
BARCLAYS AGGREGATE BOND INDEX		0.46	1.61	5.72	3.10	4.41	5.50	

Total all accounts: \$222,700,351

STATE OF ALASKA  
EVOS INVESTMENT FUND  
RATES OF RETURN  
FEB-2015



STATE STREET.

	Ending Market Value	1 Month	3 Month	1 Year	3 Year	5 Year	ITD	Inception Date
EVOS RESEARCH INVESTMENT	105,840,281	3.86	2.52	8.90	12.12	11.80	6.35	1-Nov-2000
EVOS INVESTMENT FUND BENCHMARK		3.81	2.43	8.13	11.47	11.03	5.86	
EVOS HABITAT INVESTMENT	118,143,205	3.86	2.49	8.87	12.08	11.79	8.40	1-Nov-2002
EVOS INVESTMENT FUND BENCHMARK		3.81	2.43	8.13	11.47	11.03	8.24	
EVOS KONIAG INVESTMENT	-	0.00	0.00	-0.86	8.69	9.76	7.56	1-Nov-2002
EVOS INVESTMENT FUND BENCHMARK		3.81	2.43	8.13	11.47	11.03	8.24	
EVOS RUSSELL 3000 INDEX FUND	105,167,432	5.80	2.82	14.00	17.92	16.27	5.57	1-Nov-2000
RUSSELL 3000 INDEX		5.79	2.84	14.12	18.02	16.36	5.24	
EVOS SOA INT'L EQUITY POOL	52,240,576	6.51	3.32	2.79	12.14	10.98	5.82	1-Nov-2000
MSCI EAFE (NET) INDEX		5.98	2.81	-0.03	9.41	7.78	4.20	
EVOS BROAD MARKET FIXED INCOME	66,575,172	-0.93	1.29	5.20	2.83	4.43	5.61	1-Nov-2000
BARCLAYS AGGREGATE BOND INDEX		-0.94	1.23	5.05	2.76	4.29	5.50	

Total: \$223,983,486