

# Kenai Peninsula

---



A thin strip of coastal forest interrupted by glaciers follows the shoreline on the outer Kenai coast. Cook Inlet sits between the Kenai Peninsula and the Alaska Peninsula. Much of the eastern shore of the Kenai Peninsula consists of coastal bluffs with easily eroded unconsolidated sediments. Wide tidal flats with clamming beaches are characteristic of the region. Natural sorting of these coastal sediments has produced depositional features such as the Homer Spit. Much of the land on the outer Kenai coast is located within Kenai Fjords National Park and Kachemak Bay State Park. Municipal and State lands predominate near Seward. These lands fronting the Gulf of Alaska are predominantly rocky headlands, narrow exposed boulder, cobble, and pebble beaches located at the face of rugged steep bluffs. On the eastern shore of Cook Inlet land ownership is a mix of municipal, state, and private ownership.<sup>23</sup>

Trustee Council acquisitions on the Kenai Peninsula have focused primarily on small parcel acquisitions targeting valuable habitat in unique, discreet locations along the Kenai River, the Anchor River, and other anadromous streams. Large Parcel acquisitions included inholdings in Kachemak Bay State Park and Kenai Fjords National Park. These acquisitions while significant were on a smaller scale than those in Prince William Sound and on Kodiak and Afognak Islands.

Acquisition of a significant inholding within Kachemak Bay State Park was the first acquisition completed by the Trustee Council in August of 1993. Three evaluation parcels were acquired from Seldovia Native Association to protect a highly productive estuary, eight anadromous streams, and intertidal shoreline as well as important upland habitat supporting a variety of resources and associated services injured by the spill.

The English Bay Corporation owned significant inholdings within Kenai Fjords National Park and along the Cook Inlet Kenai Coast south and west of the village. The most significant parcels from a restoration perspective were located on the deep-water fjords within the park. Port Graham Corporation also owns lands within Kenai Fjords National Park however following initial evaluation and negotiations, Port Graham elected not to pursue further negotiations with the National Park Service. Although Port Graham previously chose not to exercise their option to sell their lands to the government, the Port Graham Corporation is now seeking opportunities to establish conservation easements on a portion of their holdings within Kenai Fjords National Park.

---

<sup>23</sup>Report of the Executive Director concerning Habitat Protection, November 28, 1994, p. 35.

# Kenai Peninsula Summary

Parcel ID	Landowner/Parcel	Total Acreage	Management	Enforcement Easement	Cost	From EVOS Trust	From Other Sources
LARGE PARCELS							
	English Bay	32,470.0*	NPS	ADNR	\$15,156,790	\$14,128,074	\$1,028,716
	Kachemak Bay State Park Inholdings	23,701.6	ADNR		\$22,000,000	\$7,500,000	\$14,500,000
SMALL PARCELS							
KEN 54	Salamatof, Kenai River	1,377.0	USFWS	ADNR	\$2,540,000	\$2,540,000	\$0
KEN 1014	Grouse Lake, Kenai Peninsula	64.0	USFS		\$211,000	\$211,000	0
KEN 1002/03/04	KNA Package, Kenai	3,254.0	USFWS	ADNR	\$4,443,000.0	\$4,000,000	\$443,000
KEN 1051	Salamatof Parcels	14.5	USFWS	ADNR	\$149,500	\$149,500	\$0
KEN 1052	Salamatof Parcels	6.6	USFWS	ADNR	\$33,500	\$33,500	\$0
KEN 10	Kobylarz, Kenai River	20.0	ADNR, ADFG	BLM	\$320,000	\$320,000	\$0
KEN 19	Coal Creek, Kasilof	53.0	ADNR, ADFG	BLM	\$260,000	\$260,000	\$0
KEN 29	Tulin, Kenai Peninsula	220.0	ADNR	BLM	\$1,200,000	\$1,200,000	\$0
KEN 34	Cone, Kenai River	100.0	ADNR, ADFG	BLM	\$600,000	\$600,000	\$0
KEN 55	Overlook, Kenai Peninsula	97.0	ADNR	BLM	\$279,000	\$279,000	\$0
KEN 148	River Ranch, Kenai River	146.0	ADNR, ADFG	BLM	\$1,650,000	\$1,650,000	\$0
KEN 294	Eliot, Anchor River	19.8	ADFG	BLM	\$78,000	\$78,000	\$0
KEN 295	Crowther, Anchor River	46.0	ADFG	BLM	\$200,000	\$200,000	\$0
KEN 309	Icicle Seafoods, Ninilchik River	4.2	ADNR/Parks	BLM	\$113,000	\$113,000	\$0
KEN 310	Swartz, Ninilchik River	0.2	ADNR/Parks	BLM	\$6,000	\$6,000	\$0
KEN 1005	Ninilchik	16.0	ADNR/Parks	BLM	\$50,000	\$50,000	\$0
KEN 1006	Girves	110.0	ADNR, ADFG	BLM	\$1,835,000	\$1,835,000	\$0
KEN 1015	Lowell Point (Seward)	19.4	ADNR	BLM	\$531,000	\$531,000	\$0
KEN 1034	Patson Parcel, Kenai River	76.3	ADNR, ADFG	BLM	\$450,000	\$450,000	\$0
KEN 1038	Schilling/Roberts, Kenai River	3.3	ADNR, ADFG	BLM	\$698,000	\$698,000	\$0
KEN 1049	Mansholt, Kenai River	1.6	ADNR,	BLM	\$55,000	\$55,000	\$0
KEN 1061	Beluga Slough, City of Homer	38.0	City of Homer	ADNR/BLM	\$615,000	\$574,000	\$41,000
KEN 1060	Green Timbers, Homer Spit	68.7	City of Homer	ADNR/BLM	\$422,100	\$422,100	\$0
KEN 1060	City of Homer	50.0	City of Homer	ADNR/BLM	\$0	\$0	donation
KEN 1084	Morris (Ninilchik)	40.0	ADFG	BLM	\$38,000	\$38,000	\$0
KEN 1101	Knol	37.0	ADFG	BLM	\$28,000	\$100,000	\$0
KEN 1102	Nakada	5.0	ADFG	BLM	\$27,500		\$27,500
KEN 1103	Thompson	64.0	ADFG	BLM	\$90,000	\$90,000	\$0

\*English Bay reserved subsistence rights for shareholders on 6,068.13 acres.

*Mutch and Jacobs parcels on the Anchor River have been authorized by the Council but have not yet been conveyed to the State, Authorized matching funds were \$175,000.*



## English Bay

In February 1997, the Council authorized funds for the purchase of land within Kenai Fjords National Park and the Alaska Maritime National Wildlife Refuge from the English Bay Corporation. Surface title to 32,470 acres of land was acquired for a cost of \$15,156,790, with the Council contributing \$14,128,074. The federal trustees agreed to provide up to \$1.24 million from federal criminal restitution funds to complete the acquisition. Certain access rights for hunting, fishing and gathering activities were reserved and retained by the English Bay Corporation on 6,068 acres in the Beauty Bay area of Nuka Bay. In addition, certain rights to indigenous cultural resources were retained by the English Bay Corporation on all these lands. The English Bay Corporation also agreed to commit \$500,000 from its proceeds to establish a special cultural conservation fund to survey, protect, curate and interpret archaeological sites and cultural artifacts associated with the lands acquired. The first closing occurred in November 1997 and resulted in the purchase of 29,636 acres for \$14.1 million. A second closing occurred in August 2001 and resulted in the purchase of 1,895 acres for \$793,580.24. The third and final closing is expected to occur in 2007 for approximately 800 acres. Staggered closings have been necessary because of the need to await conveyances from BLM to the English Bay Corporation.<sup>24</sup>

The most important parcels for restoration purposes were located on the deep-water fjords of Kenai Fjords National Park. This area is characterized by an irregular coastline interspersed with protected waters, rugged shorelines, and very scenic uplands. Many of the fjords contain tidewater glaciers. The uplands are predominately steeply sloped although there are several relatively flat areas with shallow soils. A sparse forest of Sitka spruce and western hemlock covers most of the area. State waters adjacent to the park are rich with marine life such as harbor seals, sea otters, Northern sea lions, porpoises and Humpback and Orca whales. Uplands contain anadromous streams supporting pink and red salmon. The area is well known as a birder's paradise and provides habitat for marbled murrelets, pigeon guillemots, harlequin ducks, bald eagles, black oystercatchers and other marine and shore birds. The area also contains rich intertidal and subtidal habitat with dense mussel beds, kelp and eelgrass areas. The area is an increasingly popular recreation and tourist destination and is rich in historical and cultural sites including some from the Russian historic period.<sup>25</sup>

The majority of the purchased lands, 30,190 acres, are managed by the National Park Service as part of Kenai Fjords National Park. The U.S. Fish and Wildlife Service manages 2,280 acres as part of the Alaska Maritime National Wildlife Refuge. It is the intent of the Trustee Council that these parcels be managed so as to ensure public access and preserve and protect injured resources in perpetuity. Protection of these lands also serves to enhance the habitat values of adjacent federal lands by minimizing the risk of fragmentation of habitat by future development. Port Graham Corporation owns additional inholdings within Kenai Fjords National Park. Negotiations with Port Graham were suspended at the request of Port Graham.

<sup>24</sup> *Trustee Council Resolution February 14, 1997.*

<sup>25</sup> *Restoration Benefits Report, English Bay Lands, November 2, 1994.*

*Restoration Benefits identified for:*

- *Sockeye salmon*
- *Pink salmon*
- *Dolly Varden*
- *Pacific herring*
- *Bald eagles*
- *Black oystercatchers*
- *Common murre*
- *Harbor seals*
- *Harlequin ducks*
- *Intertidal and sub-tidal resources*
- *Marbled murrelets*
- *Pigeon guillemots*
- *River otters*
- *Sea otters*
- *Cultural resources*
- *Recreation*
- *Wilderness*
- *Subsistence*

## The English Bay Acquisition At a Glance:

Total Acreage:	32,470 acres (maximum)
Surface estate in fee:	32,470
English Bay Reserved Rights:	Within the acreage above, EB reserved subsistence rights on 6,068.13 acres for shareholders in the Beauty Bay area of Nuka Bay.
Land Management:	<b>National Park Service</b> manages 31,190 acres as part of Kenai Fjords National Park. An enforcement easement is held by the State of Alaska. <b>U.S. Fish and Wildlife Service</b> manages 2,280 acres as part of the Alaska Maritime National Wildlife Refuge
Appraised Value:	Conflicting appraisals valued the package at \$4,118,100 and \$18,646,680. The purchase price was negotiated.
Cost:	\$15,156,790
Funding Source:	\$14,128,074 from EVOS Trust, \$1,028,716 from criminal restitution fund.
Evaluation Parcels:	ENB 02, 03, 04, 05, 06, 07 <sup>26</sup>

### Resolutions:

February 14, 1997

### Court Request:

September 4, 1997



<sup>26</sup>Large Parcel Evaluation and Ranking, Vol. II, p. 125-164





## Kachemak Bay State Park Inholdings

In August 1993, the state acquired surface title to 23,701 acres of private inholdings within Kachemak Bay State Park on the Kenai Peninsula. This acquisition protects a highly productive estuary, several miles of anadromous fish streams and intertidal shoreline and upland habitat for bald eagles, marbled murrelets, river otters, and harlequin ducks. The Council contributed \$7.5 million to this purchase and the State of Alaska contributed \$7 million from the Exxon plea agreement and \$7.5 million from the civil settlement with Alyeska Pipeline Service Company.

Trustee Council efforts in Kachemak Bay focused on China Poot Bay, Sadie Cove, and Jackaloff Bay. These areas contain 8 anadromous streams, which support coho, chum sockeye and pink salmon, and Dolly Varden by providing spawning and rearing habitat. There were 41 documented bald eagle nest sites located in this area. Bald Eagles, black oystercatchers and harlequin ducks likely utilize the intertidal and riparian areas for feeding and nesting. China Poot Bay is documented as one of the most productive shallow benthic habitats in Kachemak Bay. Harbor seals feed in this area and frequently haulout on nearshore rocks and bars. The area is also a high use area for river otters and sea otters. Large numbers of marbled murrelets forage on Kachemak Bay and there is a high level of confidence that nesting occurs on these parcels.

China Poot, Neptune and Peterson bays are highly productive estuaries that provide habitat for birds, anadromous fish, mammals, and intertidal marine life. The area receives very high recreational use, has 28 documented archaeological sites and is visible from Homer and the adjacent marine waters. In addition, Sadie Cove provides overwintering habitat for waterfowl. These parcels are accessible by road from Seldovia and by boat from Homer. They are popular recreation destinations and enjoy moderate subsistence use by residents of Port Graham and English Bay.<sup>27</sup>

These lands are managed by the State of Alaska as part of Kachemak Bay State Park. It is the intent of the Trustee Council that these parcels be managed so as to ensure public access and preserve and protect injured resources in perpetuity.

---

<sup>27</sup> *Habitat Protection Working Group, Opportunities for Habitat Protection/Acquisition, February 16, 1993.*

*Restoration Benefits identified for:*

- *Sockeye salmon*
- *Pink salmon*
- *Dolly Varden*
- *Bald eagles*
- *Black oystercatchers*
- *Common murre*s
- *Harbor seals*
- *Harlequin ducks*
- *Intertidal and sub-tidal resources*
- *Marbled murrelets*
- *Pigeon guillemots*
- *River otters*
- *Sea otters*
- *Cultural resources*
- *Recreation*
- *Wilderness*
- *Subsistence*

## The Kachemak Bay Acquisition At a Glance:

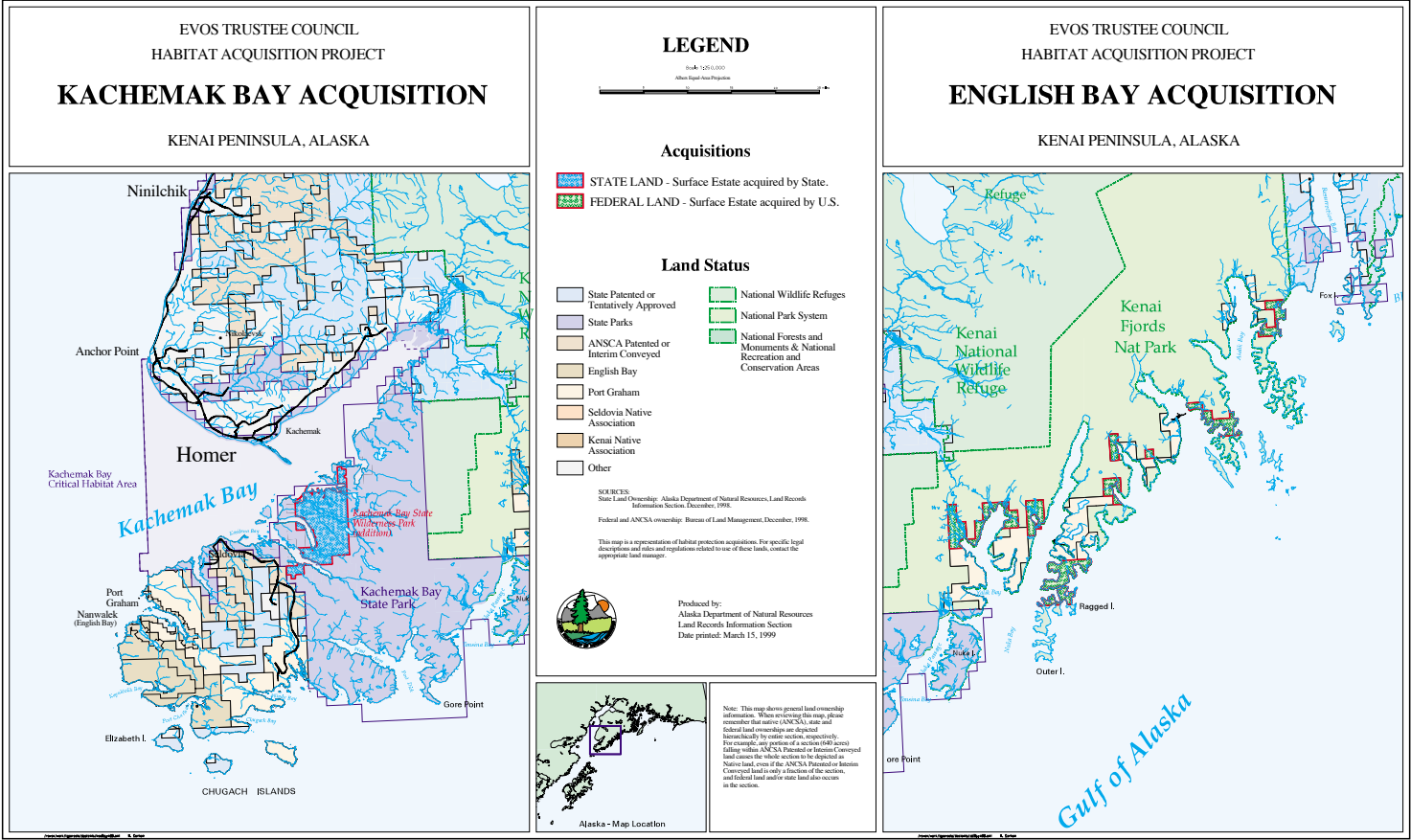
Total Acreage:	23,701 acres
Surface estate in fee:	23,701 acres
Conservation Easement:	0 acres
Land Management:	<b>State of Alaska</b> , Division of Parks and Outdoor Recreation Kachemak Bay State Park.
Appraised Value:	The negotiated value for this package was based upon negotiation and appraisal arbitration resulting in the following valuations: Land: \$15.49 million Timber: \$4.51 million Subsurface: \$2.0 million
Cost:	\$22,000,000
Funding Source:	\$7,500,000 from EVOS Trust, \$22,000,000 from other.
Evaluation Parcels:	CIK 01, 02, 03 (Imminent Threat Process) <sup>28</sup>

## Resolutions:

December 11, 1992



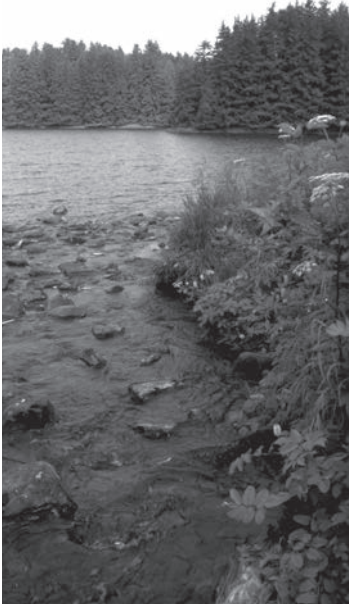
<sup>28</sup> *Opportunities for Habitat Protection/Acquisition, Section 3, CIK.*



## **BACK OF KACHEMAK BAY & ENGLISH BAY MAP**

# Kenai Peninsula Small Parcels

---



Small parcel acquisitions on the Kenai Peninsula have largely focused on the Kenai River Watershed, the Anchor River, the Ninilchik River and the Homer Spit. The Small Parcel Program has provided the Trustee Council with a unique opportunity to address local needs and concerns by securing small parcels that provide additional recreational and sport fish access and address specific community needs in addition to providing important restoration values for injured resources and services.

Kenai River Acquisitions include Salamatof, Kenai Natives Association package, Cone, River Ranch, Girves, Patson, Schilling, Mansholt, and Kobylarz parcels. These parcels have particular value to the restoration of injured resources and services because of their riparian habitat and access opportunities for recreation and sport fishing. These parcels have contributed to the restoration of sockeye salmon, Dolly Varden, pink salmon, bald eagles, river otters, intertidal and subtidal resources, cultural resources, wilderness, and recreation.

The Tulin, Coal Creek, Overlook, Beluga Slough, and Green Timbers parcels are located along the shoreline of Cook Inlet and contributed to the restoration of sockeye salmon, pink salmon, harbor seals, intertidal and subtidal resources and recreation.

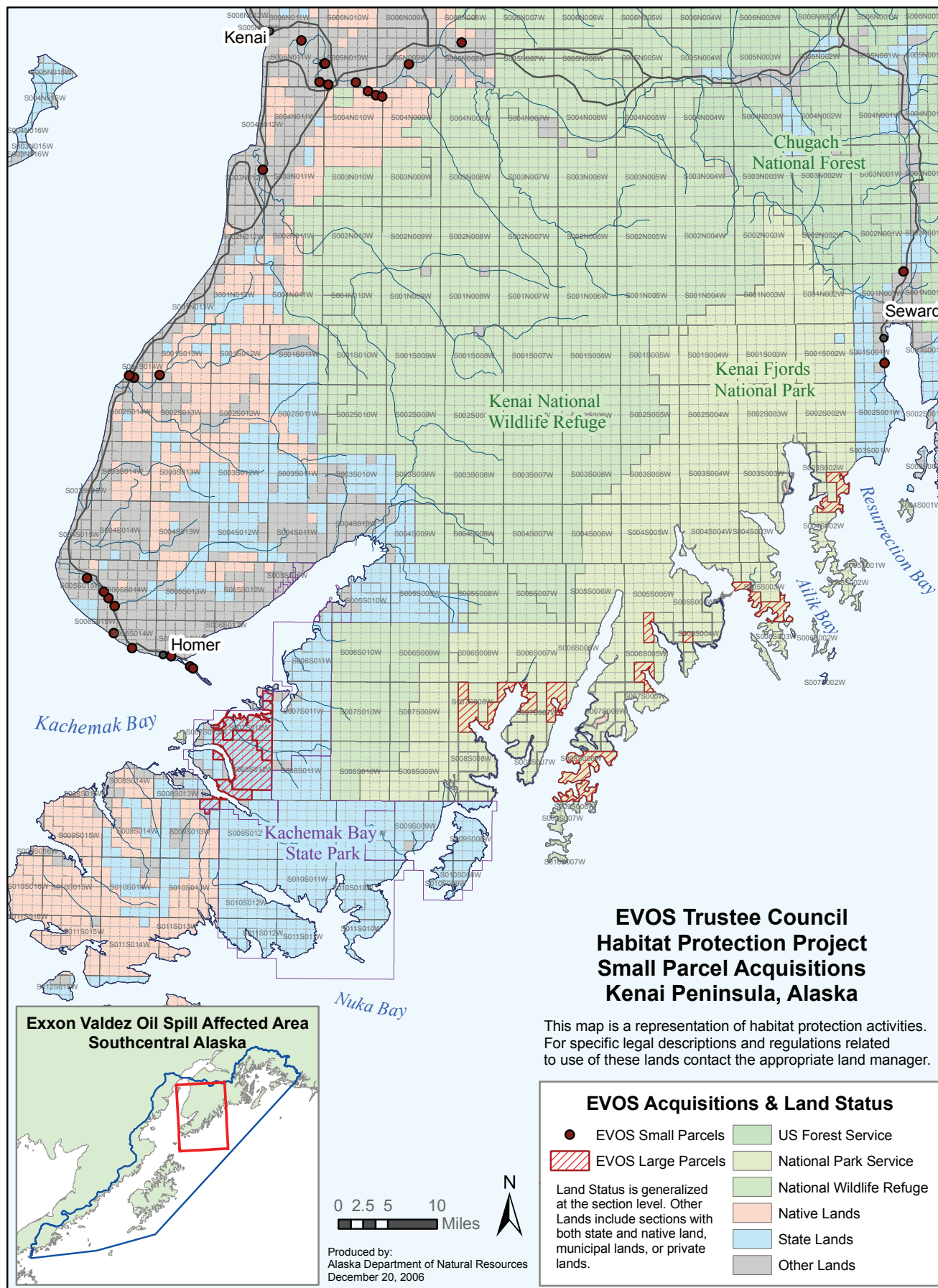
The Morris, Icicle Seafoods, and Swartz parcels are located along the Ninilchik River and contributed to the restoration of species dependent upon riparian habitat such as sockeye salmon, pink salmon, harlequin ducks, and services such as recreation and sport fishing.

Along the Anchor River small parcel acquisitions include Eliot, Crowther, Knol, Nakada, and Thompson which have contributed to the protection of riparian habitat which in turn contributes to the restoration of sockeye salmon, pink salmon, Dolly Varden, harlequin ducks and recreation and sport fishing access.

Acquisitions on the Kenai have been pursued with the assistance of several non-governmental organizations (NGOs) such as The Trust for Public Lands, The Kachemak Heritage Land Trust, The Nature Conservancy, and The Conservation Fund. The NGOs have brought their expertise in negotiations, their ability to engage other organizational partners, and private sector donations to the table in order to leverage Trustee Council efforts. The Kachemak Heritage Land Trust and Trust for Public Lands have been involved in acquisitions in the Homer area, most notably the Homer Spit and Beluga Slough acquisition. The Nature Conservancy and The Conservation Fund have been actively involved in acquisitions along the Anchor, Ninilchik and Kenai Rivers.









## Kenai River Parcels



The Council pursued acquisition of strategic parcels nominated by willing sellers along the Kenai River. The Kenai River is an increasingly popular recreational destination for tourists, sport fishers, boaters and others. These diverse uses threaten to degrade fish spawning and rearing habitat on the Kenai River. In addition, development of these parcels threatens important wetland habitat that serves as a filtering system for upland runoff and an important source of nutrients and materials essential to the welfare of the Kenai's fishery resources. Pink salmon and Dolly Varden spawn along the banks of the Kenai. The many sloughs and wetlands provide rearing and overwintering habitat for Dolly Varden, chinook, and coho salmon. Sockeye salmon also migrate and rear along the banks of the Kenai. Recreation use on the Kenai is high and very much dependent upon the health of the fisheries resources injured by the *Exxon Valdez* oil spill, particularly sockeye salmon and Dolly Varden. Kenai River parcels of note include:

The **Kobylarz** parcel has approximately 1100 feet of river frontage on Big Eddy at mile 14 of the Kenai River, one of the most popular fishing areas on the river. Pink salmon and Dolly Varden spawn in the river adjacent to the parcel and sockeye salmon migrate and rear along the banks of the river. The parcel also provides excellent rearing and overwintering habitat for Dolly Varden, chinook and coho salmon. Acquisition of this parcel has addressed an ongoing trespass use by fishermen attempting to gain access to Big Eddy.<sup>29</sup>

The **Mansholt** parcel has approximately 100 feet of river frontage and is strategically located adjacent to the Kobylarz parcel in the Big Eddy area of the river. The property supports a spring fed slough and riparian wetlands providing rearing habitat for coho and chinook salmon. Pink salmon and Dolly Varden spawn in the river adjacent to the property and the parcel provides overwintering habitat for Dolly Varden. The property provides pedestrian access to the Big Eddy fishing hole.<sup>30</sup>

The **Cone** parcel located near the mouth of the Kenai River has an extensive high valued tidal marsh supporting intertidal/subtidal resources. Hundreds of thousands of waterfowl, shorebirds, and raptors use this area for feeding, nesting, and staging.<sup>31</sup>

The **Girves** parcel is located near mile 19 of the Kenai River just outside the city of Soldotna and experiences high levels of trespass use resulting in erosion of the riverbank. Acquisition of this parcel has allowed active management of access to protect and reestablish riparian habitat.<sup>32</sup>

The **Salamatof** parcel also contains two documented bald eagle nests and provides key river otter habitat, including denning areas and concentrated latrine sites.

The **Roberts/Shilling** parcel is located on the Kenai River adjacent to the Kenai Peninsula Visitors Center in Soldotna. It has approximately 644 feet of river frontage and experiences high levels of sportfishing use. Acquisition of this parcel allowed for the development of elevated grate walks designed to manage sportfishing and recreational access and reestablish and protect riparian habitat.<sup>33</sup>

The **Patson** parcel is located at mile 24.5 just outside the City of Soldotna on the south side of the river approximately 2.5 miles down Funny River Road. The parcel contains approximately 1,500 linear feet of river frontage. Acquisition of this parcel close to the City of Soldotna provided an opportunity to protect riparian habitat and provide managed access as appropriate close to town.<sup>34</sup>

<sup>29</sup> Trustee Council Resolution November 20, 1995.

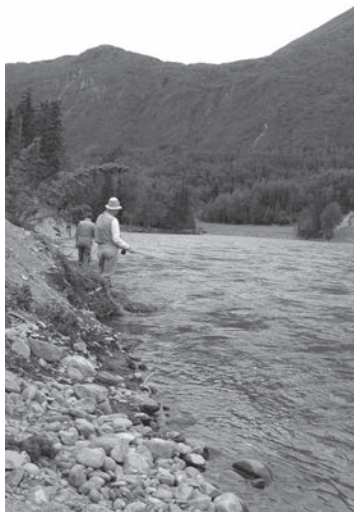
<sup>30</sup> Trustee Council Resolution November 8, 1996.

<sup>31</sup> Trustee Council Resolutions November 20, 1995.

<sup>32</sup> Trustee Council Resolutions November 20, 1995.

<sup>33</sup> Trustee Council Resolution February 14, 1997.

<sup>34</sup> Trustee Council Resolution June 28, 1996.



The **River Ranch** parcel is located near Mile 32 of the river and provides access to the river from Funny River Road on the southern side of the river. It was developed primarily as a horse and cattle ranch and removal of livestock has allowed riparian vegetation to reestablish and provide additional fish habitat.<sup>35</sup>

The **Kenai Natives Association** package contains habitat important to bald eagles for feeding during the fall and winter as they congregate in this area to feed on the late silver salmon run. This parcel also contains significant archaeological resources including the Stephanka Village site. This package and the surrounding Kenai National Wildlife Refuge lands possess high value wilderness characteristics.<sup>36</sup>

### KENAI RIVER SMALL PARCEL ACQUISITIONS

Parcel ID	Name	Acres	Cost	EVOS	Other	Manager
KEN 54	Salamatof	1,377.0	\$2,540,000	\$2,540,000	\$0	USFWS
KEN 1002/ 03/04	KNA Package	3,254.0	\$4,443,000	\$4,000,000	\$443,000	USFWS
KEN 1051	Salamatof Parcels	14.5	\$149,500	\$149,500	\$0	USFWS
KEN 1052	Salamatof Parcels	6.6	\$33,500	\$33,500	\$0	USFWS
KEN 10	Kobylarz	20.0	\$320,000	\$320,000	\$0	ADNR, ADFG
KEN 34	Cone	100.0	\$600,000	\$600,000	\$0	ADNR, ADFG
KEN 148	River Ranch	146.0	\$1,650,000	\$1,650,000	\$0	ADNR, ADFG
KEN 1006	Girves	110.0	\$1,835,000	\$1,835,000	\$0	ADNR, ADFG
KEN 1034	Patson, Parcel	76.3	\$450,000	\$450,000	\$0	ADNR, ADFG
KEN 1038	Schilling/Roberts	3.3	\$698,000	\$698,000	\$0	ADNR, ADFG
KEN 1049	Mansholt	1.6	\$55,000	\$55,000	\$0	ADNR, ADFG

### Kasilof River Parcels

The **Coal Creek Moorage** parcel is located at the confluence of Little Coal Creek and the Kasilof River and is part of the Kasilof River Flats. The parcel has an extensive tidal marsh that provides spawning, rearing and overwintering habitat for Dolly Varden. Pink salmon and Dolly Varden spawn in the river adjacent to this parcel. Acquisition of this parcel protects riparian habitat and stream banks to minimize erosion and bank degradation. The parcel also has important cultural and archaeological resources. It has evidence of early Russian structures, numerous barabaras, fish pits and two abandoned fox farming pens. The parcel also supports recreational use by local fishers, birdwatchers and hikers. In addition, the parcel also supports chinook and coho salmon, trout, geese, cranes and other waterfowl and shorebirds. The parcel also serves as an important wildlife movement corridor for black bear and moose.<sup>37</sup>

### KASILOF RIVER SMALL PARCEL ACQUISITIONS

Parcel ID	Name	Acres	Cost	EVOS	Other	Manager
KEN 19	Coal Creek,	53.0	\$260,000	\$260,000	\$0	ADNR, ADFG

<sup>35</sup>Trustee Council Resolutions November 20, 1995.

<sup>36</sup>Trustee Council Resolutions November 20, 1995.

<sup>37</sup> Trustee Council Resolution November 20, 1995..





## Ninilchik Parcels

The Swartz and Icicle Seafoods collection of small parcels (18 platted lots, are downstream and immediately adjacent to a large parcel managed by the Alaska Department of Fish and Game. This package borders the Ninilchik River one of south central Alaska's most important sportfishing rivers and contains approximately 1,600 linear feet of shoreline. These lots are subject to periodic flooding during high water events. Harlequin ducks are commonly viewed in the downstream portion of this property and many wildlife species commonly use this area such as otters, mergansers, mink bear and moose. The public has used this area of the Ninilchik River for decades as they pursue king salmon, Dolly Varden silver salmon and steelhead. Placing this access point in public ownership secures this popular recreation and sportfishing accessing point for residents and tourists and helps to support the important sportfishing industry.<sup>38</sup>

The **Ninilchik** parcel is located immediately adjacent to the Ninilchik State Recreation Area and shares many of the attributes of the previously described parcels. In addition, acquisition of this parcel greatly enhances access to publicly owned lands and has helped to eliminate trespass problems in this area.

The **Morris** parcel is located several miles upstream and includes both banks of the Ninilchik River for a distance of several hundred yards and provides key habitat for pink salmon and Dolly Varden. Other species utilizing this section of the river for spawning and rearing include chinook and coho salmon. Brown bear and moose also range along the river corridor and can be found in the uplands as well. The Kenai River Sportfishing Association notes that this section of the Ninilchik River provides some of the best steelhead fishing in the drainage making the parcel highly important for recreation and sportfishing access.<sup>39</sup>

### NINILCHIK SMALL PARCEL ACQUISITIONS

Parcel ID	Name	Acres	Cost	EVOS	Other	Manager
KEN 309	Icicle Seafoods	4.2	\$113,000	\$113,000	\$0	ADNR
KEN 310	Swartz	0.2	\$6,000	\$6,000	\$0	ADNR
KEN 1005	Ninilchik	16.0	\$50,000	\$50,000	\$0	ADNR
KEN 1084	Morris	40.0	\$38,000	\$38,000	\$0	ADFG

## Anchor River Parcels

The parcels acquired along the Anchor River provide protection of important riparian habitat for salmon, steelhead trout and Dolly Varden as well as ensuring public access to a prime sportfishing area. The Anchor River supports popular salt and freshwater fisheries and boasts the largest freshwater fishery on the Kenai Peninsula south of the Kasilof. The Anchor River also provides important habitat for many species of wildlife including harlequin ducks and river otters.

The **Thorn Crowther** and **Elliot** parcels are located along the lower Anchor River less than a mile upstream from the Sterling Highway. These parcels contain riparian and upland habitats that provide structure to the riverbank and cover contributing to high quality fish habitat essential to the production of salmon, trout and Dolly Varden. This area is an important rearing and overwintering area as well as a major migratory corridor for adults of all species attempting to reach upstream spawning grounds. Anchor River Dolly Varden are highly migratory and tagging studies have demonstrated that they contribute to populations that inhabit Deep

<sup>38</sup> *Trustee Council Resolution, February 25, 2002.*

<sup>39</sup> *Trustee Council Resolution, August 9, 1999.*



Creek, Ninilchik and other Kachemak Bay tributaries. These parcels include one of the most popular reaches of the river for sportfishing access.<sup>40</sup>

The **Knoll**, **Nakada** and **Thompson** parcels are located approximately eight miles upstream from the mouth of the Anchor River. They are in the floodplain of the river and when viewed in combination with adjacent State lands and other protected properties over 500 acres of intact floodplain and over two miles of river frontage are protected. This portion of the Anchor River provides important spawning and rearing habitat for four species of salmon, Dolly Varden, and the largest steelhead run in Cook Inlet. Bald eagles nest and feed extensively in the cottonwoods along this portion of the river. These parcels are also important for recreation and sportfishing access.<sup>41</sup>

## ANCHOR RIVER SMALL PARCEL ACQUISITIONS

Parcel ID	Name	Acres	Cost	EVOS	Other	Manager
KEN 294	Eliot	19.8	\$78,000	\$78,000	\$0	ADFG
KEN 295	Crowther	46.0	\$200,000	\$200,000	\$0	ADFG
KEN 1101	Knol	37.0	\$28,000	\$100,000	\$0	ADFG
KEN 1102	Nakada	5.0	\$27,500	\$0	\$27,500	ADFG
KEN 1103	Thompson	64.0	\$90,000	\$90,000	\$0	ADFG

## Homer Area Parcels

The **Tulin** parcel is located approximately 10 miles north of Homer on Cook Inlet. The parcel contains 3,580 feet of shoreline and runs parallel and contains Diamond Creek. The parcel is adjacent to State owned land to the south that does not have road access to the Sterling Highway. This parcel has exceptional potential to enhance recreational opportunities by providing improved access to a large section of beach that prior to purchase was inaccessible to the public. This large wooded parcel is located on a bluff overlooking Cook Inlet and provides habitat for nesting bald eagles.<sup>42</sup>

The **Overlook** parcel is located just outside of Homer on the bluff overlooking Cook Inlet. It is situated below and visible from the Sterling Highway scenic overlook. The parcel is bounded on the north by State lands. The parcel is accessible by foot down a steep path or via a 3.5-mile hike from Bishops Beach. The parcel has  $\frac{3}{4}$  mile of shoreline on Kachemak Bay and contains extensive tide pools, unique to the area, with rich intertidal flora and fauna. Acquisition of this parcel also benefits recreation and tourism enjoyed particularly by local residents. Local community groups, public schools, and natural history groups use this area for environmental education field trips, bird watching, and specimen collecting.<sup>43</sup>

The Homer Spit **Mud Bay** or **Green Timbers** parcel consists largely of low lying intertidal mud flats and salt marsh on the eastern side of the Homer Spit along Kachemak Bay extending across the spit to include the outer beach berm. This parcel protects important intertidal resources. The estuarine habitat extends from the mid intertidal to the supratidal elevations transitioning from a muddy intertidal, gravel substrate to grass salt marsh along the western beach berm. On the bays side, the brackish waters of the intertidal provide habitat for juvenile salmon, harbor seals, and rich intertidal vegetation supporting numerous species of migrating shorebirds. In the spring, the wetter areas of this parcel are of importance to a variety of waterfowl. Because of the rich intertidal and the resources that use the

<sup>40</sup> *Trustee Council Resolution May 3, 2001*

<sup>41</sup> *Trustee Council Resolution, March 1, 2004.*

<sup>42</sup> *Trustee Council Resolution November 20, 1995.*

<sup>43</sup> *Trustee Council Resolution November 20, 1995, March 3, 1997.*



intertidal, the area is of great interest to the local community and supports recreation and tourism activities such as bird watching and wildlife viewing.<sup>44</sup>

The **Beluga Slough** parcel is a 38-acre tract adjacent to the Beluga Slough that drains into Kachemak Bay. This parcel protects important intertidal resources. The intertidal vegetation and invertebrates are of special importance to migratory birds seasonally. In the spring the tidal flats are used by tens of thousands of migrating birds and the uplands are used for roosting at high tide. The area is also important to waterfowl as recognized in the Kachemak Bay Critical Habitat Area Management. Because of these resource values the community places a high value on the area and the parcel helps support community based recreation and tourism activities such as the Homer Shorebird Festival.<sup>45</sup>

As part of the Homer Spit/Beluga Slough package, the City of Homer agreed to set aside and place an additional 59.52 acres of city land in protective status by conveying a conservation easement to the United States and State of Alaska. The Homer Spit and Beluga Slough parcels are owned and managed by the City of Homer with conservation easements held by the United States, and the State of Alaska.

### HOMER AREA SMALL PARCEL ACQUISITIONS

Parcel ID	Name	Acres	Cost	EVOS	Other	Manager
KEN 29	Tulin	220.0	\$1,200,000	\$1,200,000	\$0	ADNR
KEN 55	Overlook	97.0	\$279,000	\$279,000	\$0	ADNR
KEN 1061	Beluga Slough	38.0	\$615,000	\$574,000	\$41,000	City of Homer
KEN 1060	Green Timbers	68.7	\$422,100	\$422,100	\$0	City of Homer
KEN 1060	City of Homer	59.5	\$0	\$0	donation	City of Homer

### Seward Parcels

The **Grouse Lake** parcel was an inholding in Chugach National Forest. It is located approximately 7.5 miles north of Seward on the west shore of Grouse Lake. The parcel provides the only level access area around the lake and Grouse Creek. The lake has long been a favorite recreation area used by local residents and tourists for fishing, camping and hiking. The parcel provides key habitat for pink salmon and Dolly Varden. Dolly Varden spawn in the streams on this parcel and are reared in Grouse Lake. Grouse Lake is the site of an active sockeye salmon stocking program by ADF&G. Bald eagles and river otters are frequently seen in the area.<sup>46</sup>

The **Lowell Point** parcel serves as an important access point to Resurrection Bay for small boat operators and kayakers, and contains a trailhead and trail to Caines Head State Recreation Area. The area is also popular for fishing, camping, picnicking and beachcombing. The primary benefits of acquisition of this parcel are to recreation and sport fishing, and Alaska State Parks allocated additional state restitution funds to develop day use parking, trailhead and interpretive exhibits on this parcel.<sup>47</sup>

### SEWARD SMALL PARCEL ACQUISITIONS

KEN 1014	Grouse Lake	64.0	\$211,000	\$211,000	\$0	USFS
KEN 1015	Lowell Point (Seward)	19.4	\$531,000	\$531,000	\$0	ADNR

<sup>44</sup> Trustee Council Resolution October 3, 1997.

<sup>45</sup> Trustee Council Resolution October 3, 1997.

<sup>46</sup> Trustee Council Resolution, November 20, 1995.

<sup>47</sup> Trustee Council Resolution November 20, 1995.











